

Artist Commission (Illustrators/Graphic Designers)

Corbiere Ward, Princess Elizabeth Hospital

Overview:

The Duchess of Kent ward is moving into the newly refurbished Corbiere ward. This has provided the exciting opportunity to create a wonderful new ward environment that is home from home and dementia friendly.

Corbiere ward is an older adult's long term care ward, care home.

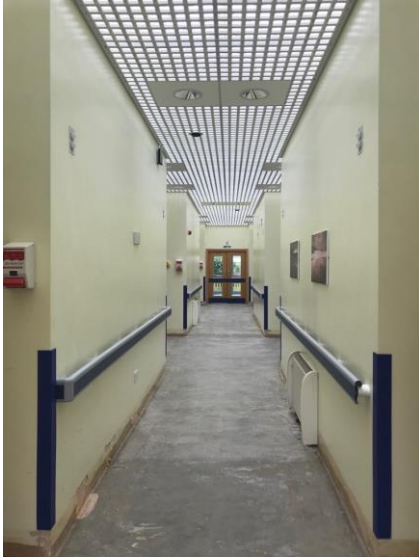
Themes:

The overarching theme for all artwork within Health and Social Care is to bring the outside inside linking to nature and Guernsey. The dedicated team of Nurses and Managers have a clear vision for their new ward which is to create an environment which sees the service users in the countryside (corridors to the bedrooms), through into the village which has shop fronts and a café (main lounge and dining area). The artwork should be friendly and vibrant.

Reminiscing:

A key role of the artwork is to promote reminiscing. By individuals expressing themselves through their past, they can communicate what was (and is) important to them – special days, people they love, events that changed their life. It restores a sense of self and belonging.

The ward environment.

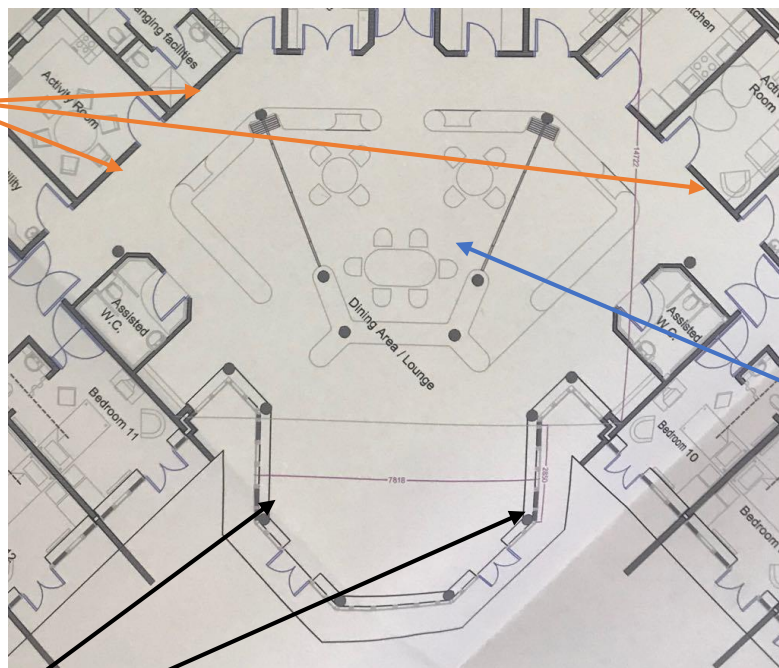


Corridors (the countryside)

There are two corridors which house 10 bedrooms each. The corridor artwork can be repeated in both corridors. The artwork should give a sense of travelling through the country side, with references to Guernsey be it plants and trees or iconic landmarks. The artwork will go on both walls from floor to ceiling.

The main ward area is the 'Village'.

Three shop front designs on the walls.



Café area Designs.

Two nature views designs on the windows.

The designs for the artwork for the café area is to be inspired by an old café in St Peter Port Maison Carre.



The Commission.

This commission is aimed at an Artist with 5+ Years' professional experience.

They are required to have Public Liability Insurance.

(Advice on Public Liability Insurance can be obtained through Start up Guernsey, info@startup.gg)

The Artist will need to prepare their artwork for digital print.

(Advice on this can be offered prior to applying for the Commission.)

The Artist must be available to complete the work to schedule.

The fee includes all research, attending meetings and preparing the artwork for print.

The Artist will be expected to meet with and work closely with the Nursing staff and ward Manager and the Commission will be managed by the Culture, Arts and Health Manager.

The candidate will be chosen by the Nursing staff/ ward Manager in partnership with the Arts Strategy Group.

The time frame for the project is:

Deadline for application by the end of day Friday the 8th of March.

- Week of the 11th of March chosen Artist will be informed of their selection.
- Week of the 18th of March Artist to meet staff and view ward.
- 4 weeks for Artist to complete Artwork and to have it signed off and agreed.
- Week 22nd of April artwork to the printers.
- Week 19th of May artwork installed on the ward.

The dates are not fixed but the project is to be completed by the end of April.

The Fee is: £5000. This includes research and meeting time.

This commission has been funded through charitable donations.

What we require.

- A CV
- Examples of your work.
- A mood board, sketches which demonstrate some of your ideas and approaches to this commission.

Applications and any enquires can be emailed to the Culture, Arts and Health Manager lottie.barnes@gov.gg (please note if sending large files please send via WeTransfer)

Applications can also be dropped off for the attention of Lottie Barnes, Culture, Arts and Health Manager at the Porters Lodge, Main Entrance at the Princess Elizabeth Hospital or posted.

Please note: These examples have been identified as potential ideas but are not necessarily a true representative of the style of artwork sought.

