



## ANALYSIS OF PUBLISHED BUS PASSENGER JOURNEYS – QUARTER 1, 2019

### Summary

A total of **375,673** passenger journeys were undertaken on public bus services during the first quarter of 2019, representing an increase of 37,292 journeys (11.0%) when compared to the same period in 2018.

This easily represents the highest first quarter passenger journey figures since records in the current format began in 2010 and represents an overall increase in passenger journeys for the first quarter of 44.7% in just five years (28.4% in the last three years).

Passenger journeys during the commuter period (06:00 – 09:30 AM & 16:00 – 18:30 PM) in Quarter 1 has also shown a healthy increase between 2016 and 2019 with a growth of some 16,950 passengers (16.1% in three years).

### Analysis

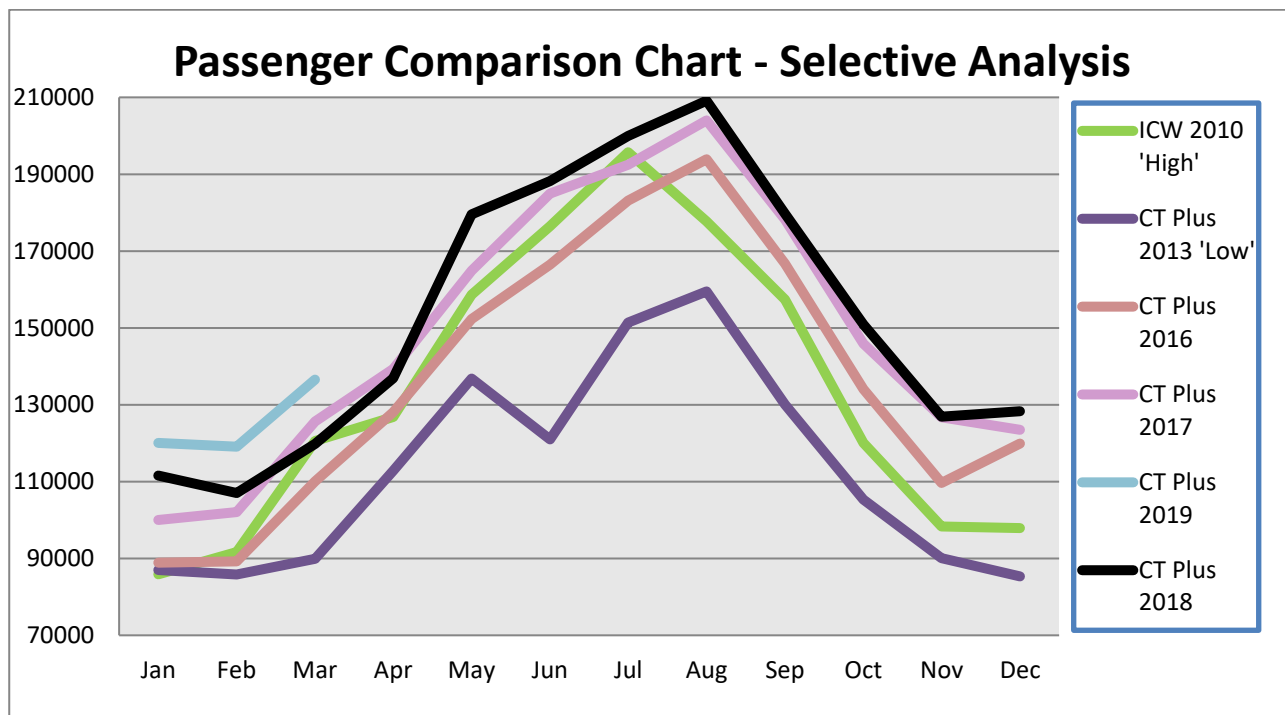
**Table 1 – Annual / Monthly passenger totals**

<b>Month</b>	<b>2010 'high'</b>	<b>2013 'low'</b>	<b>2016</b>	<b>2017</b>	<b>2018</b>	<b>2019</b>	<b>Difference</b>	<b>%</b>
January	85,875	86,955	88,290	100,019	111,572	120,046	8,474	7.6
February	91,653	85,835	94,760	102,032	107,027	119,084	12,057	11.3
March	120,528	89,883	109,504	125,639	119,782	136,543	16,761	14.0
April	126,816	112,822	128,097	139,292	136,911			
May	158,615	136,824	153,692	164,847	179,514			
June	176,431	120,960	165,453	184,971	188,129			
July	195,709	151,394	185,114	192,477	199,929			
August	177,718	159,493	193,896	203,997	209,130			
September	157,363	130,074	171,282	178,204	179,675			
October	120,054	105,352	134,097	145,859	150,871			
November	98,340	90,068	109,642	126,713	126,906			
December	97,915	85,333	119,901	123,519	128,290			
<b>Total Jan-Mar</b>	<b>298,056</b>	<b>262,673</b>	<b>292,554</b>	<b>327,690</b>	<b>338,381</b>	<b>375,673</b>	<b>37,292</b>	<b>11.0</b>
<b>Total Year</b>	<b>1,607,017</b>	<b>1,354,993</b>	<b>1,653,728</b>	<b>1,789,569</b>	<b>1,837,789</b>			

**Table 2 – Quarterly Commuter Passengers**

Commuter Passenger Analysis - Quarter 1 (Jan-Mar)							
Year	AM (06:00-09:30)	PM (16:00-18:30)	Total	Annual Increase	Cumulative Increase	% increase	Cumulative Increase
2016	50,000	55,331	105,331				
2017	53,964	57,537	111,501	6,170		5.9	
2018	53,831	59,867	113,698	2,197	8,367	2.0	7.9
2019	57,366	64,915	122,281	8,583	16,950	7.5	16.1

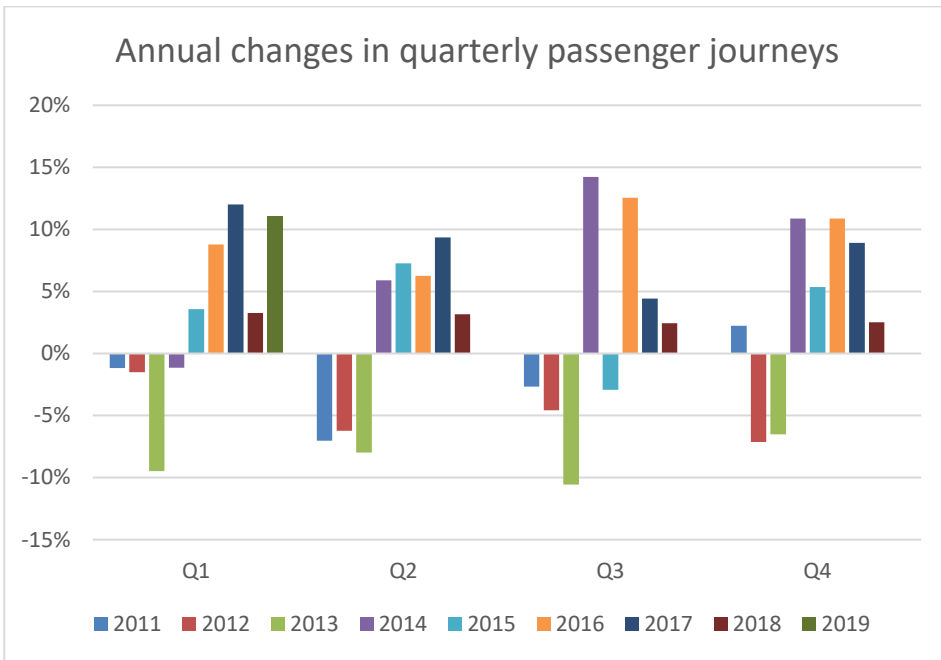
**Graph 1 – Compares previous ‘high’ (2010), ‘low’ (2013) with the period 2016 to 2019**



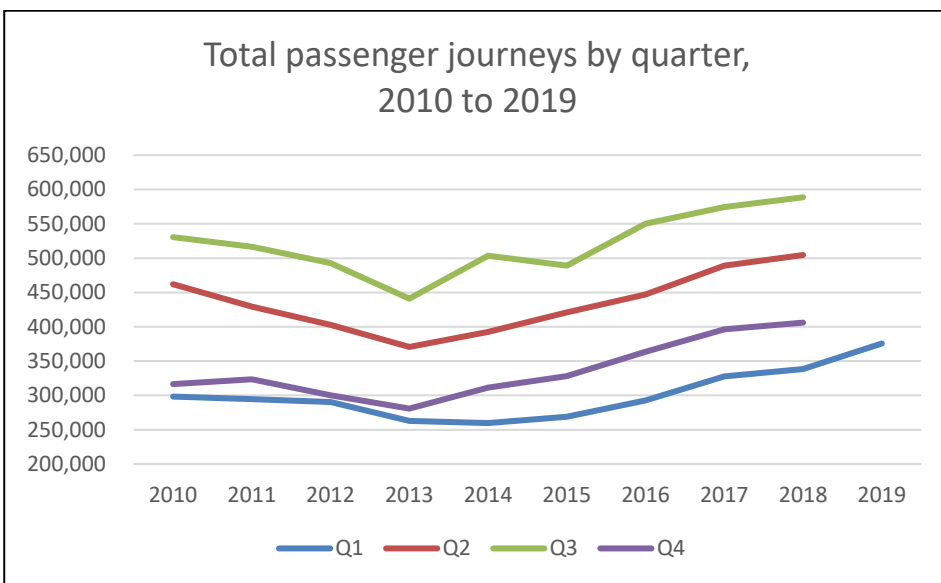
**Table 3 - Total Passengers by quarter**

Year	Total passenger journeys			
	Q1	Q2	Q3	Q4
2010	298,056	461,862	530,790	316,309
2011	294,577	429,461	516,588	323,340
2012	290,153	402,774	492,969	300,309
2013	262,673	370,606	440,961	280,753
2014	259,691	392,464	503,697	311,251
2015	268,957	420,934	488,960	327,950
2016	292,554	447,242	550,292	363,640
2017	327,690	489,110	574,678	396,091
2018	338,381	504,564	588,734	406,067
2019	375,673			

**Graph 2 – Annual changes in quarterly passenger journeys**



**Graph 3 – Total passenger journeys by quarter**



**Table 4 – Passengers by Route – Average Loadings for March 2019**

<b>Passengers by Route - March 2019*</b>			
<b>Route</b>	<b>Average Loading</b>	<b>Route</b>	<b>Average Loading</b>
N1	31.0	93	15.1
N2	22.5	31	11.8
N3	22.2	95	11.1
91	21.9	61	10.4
41	21.8	21	10.3
13	19.3	32	9.9
42	19.0	52	7.6
92	18.7	81	7.3
11	18.5	51	6.7
12	17.5	P2	6.4
71	16.4	62	6.1
94	16.3		

\*Terminus to Terminus

**Issued: 16 April 2019**