



ANALYSIS OF PUBLISHED BUS PASSENGER JOURNEYS – QUARTER 2, 2019

Summary

A total of **523,730** passenger journeys were undertaken on public bus services during the second quarter of 2019, representing an increase of 19,123 journeys (3.80%) when compared to the same period in 2018.

For the year so far, the total number of passengers carried is 899,700 representing an increase of 56,468 passenger journeys, equivalent to a 6.7% increase over the same period last year.

This represents an increase of more than **a quarter of a million passenger journeys** over the period January to June as compared to the same period in 2013 – equivalent to a **42% increase in passenger journeys in just six years**.

The monthly variance in the summer months is heavily influenced by visitor numbers and so the potential growth in passenger numbers is often smaller than in the ‘shoulder’ months.

Analysis

Table 1 – Annual / Monthly passenger totals

<u>Month</u>	<u>2010</u> <u>‘high’</u>	<u>2013</u> <u>‘low’</u>	<u>2016</u>	<u>2017</u>	<u>2018</u>	<u>2019</u>	<u>Difference</u>	<u>%</u>
January	85,875	86,955	88,290	100,019	111,572	120,046	8,474	7.6
February	91,653	85,835	94,760	102,032	107,027	119,084	12,057	11.3
March	120,528	89,883	109,504	125,639	119,782	136,543	16,761	14.0
April	126,816	112,822	128,097	139,292	136,911	149,306	12,395	9.1
May	158,615	136,824	153,692	164,847	179,514	185,724	6,210	3.5
June	176,431	120,960	165,453	184,971	188,129	188,700	571	0.3
July	195,709	151,394	185,114	192,477	199,929			
August	177,718	159,493	193,896	203,997	209,130			
September	157,363	130,074	171,282	178,204	179,675			
October	120,054	105,352	134,097	145,859	150,695			
November	98,340	90,068	109,642	126,713	126,906			
December	97,915	85,333	119,901	123,519	128,290			
Total Jan-Jun	692,927	633,279	739,796	816,800	842,935	899,403	56,468	6.7
<u>Total Year</u>	1,607,017	1,354,993	1,653,728	1,789,569	1,837,560			

Graph 1 – Compares previous ‘high’ (2010), ‘low’ (2013) with the period 2016 to 2019

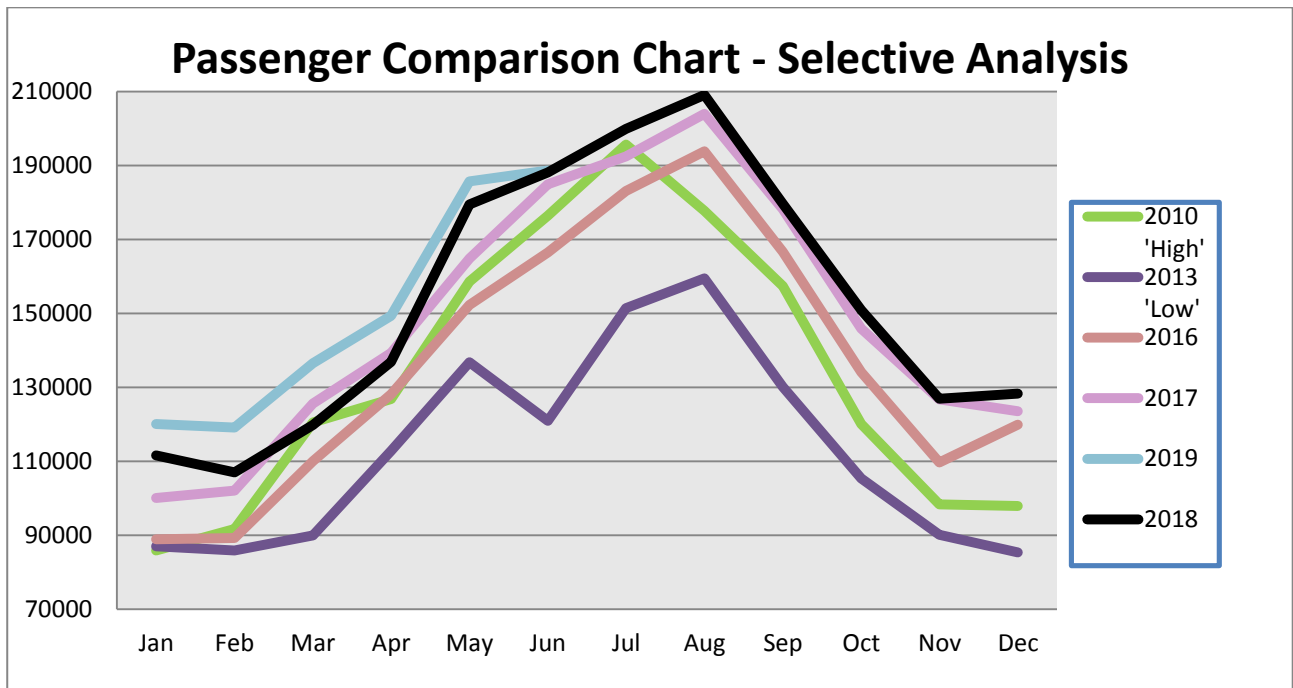
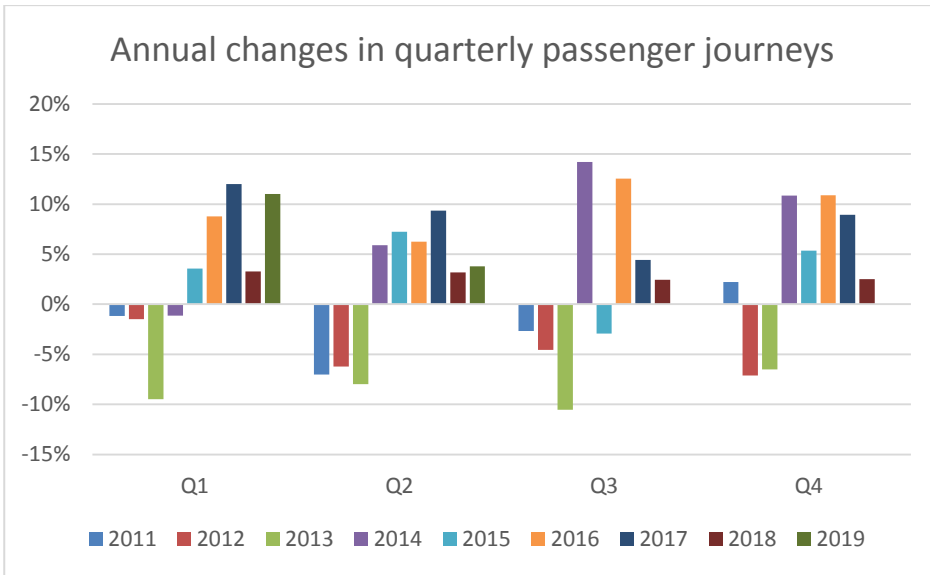


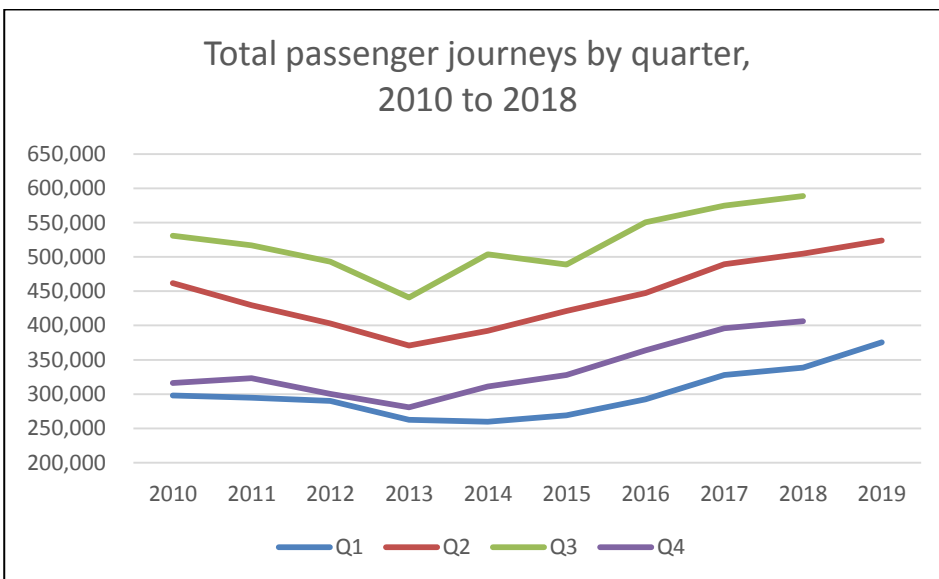
Table 2 - Total Passengers by quarter

Year	Total passenger journeys			
	Q1	Q2	Q3	Q4
2010	298,056	461,862	530,790	316,309
2011	294,577	429,461	516,588	323,340
2012	290,153	402,774	492,969	300,309
2013	262,673	370,606	440,961	280,753
2014	259,691	392,464	503,697	311,251
2015	268,957	420,934	488,960	327,950
2016	292,554	447,242	550,292	363,640
2017	327,690	489,110	574,678	396,091
2018	338,381	504,554	588,734	405,891
2019	375,673	523,730		

Graph 2 – Annual changes in quarterly passenger journeys



Graph 3 – Total passenger journeys by quarter



Issued: July 2019