



What should you do if you discover an Asian hornet nest?

What to look for:

Before carrying out any hedge trimming, bramble clearance/strimming or tree work it is strongly recommended to check out the site for the presence of any wasp-like flying insects before you start working, especially if there appears to be insects coming and going on a regular flight path.

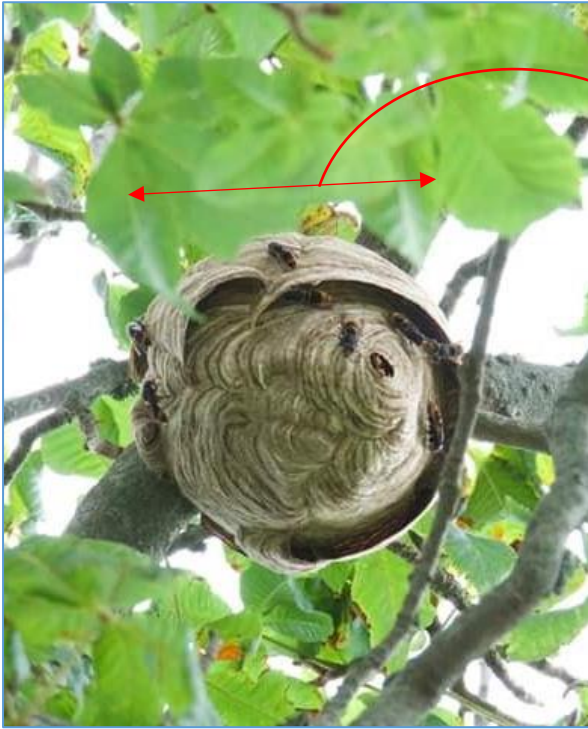
Asian hornets are colonial insects who build paper-like nests similar to common wasps.

There are two different types of nests to look out for:



Primary nest – found May-June,
usually found attached to the
roofs of sheds and outbuildings.

5-10cm/2-4"



30-40cm/12-18"

Secondary nest – found July-October, in a range of situations, including trees, brambles, earth banks or on buildings.

What you should do next:

- ✘ Do not approach the nest or disturb the hornets – try to keep at least 25m away.
- ✘ Do not intervene yourself or attempt to deal with the nest.
- ✘ Stop all activities that could disturb the nest further (e.g. hedge trimming, strimming) and retreat to a safe distance of at least 25m, ensuring no one else approaches the area.
- ✔ Report the nest to the Asian Hornet Team as soon as possible, so they can arrange for the safe removal of the nest. Contact: asianhornet@gov.gg or call 07839 197082.

Why not intervene yourself?

The removal of Asian hornet nests must only be carried out by qualified pest technicians, using Personal Protective Equipment (PPE) and a precise technique whereby a pesticide is applied to the inside of the nest.

An inappropriate nest destruction technique can result in:

- Multiple attacks by hornets defending the nest. This presents a serious health risk and fatalities have occurred due to anaphylaxis or toxic reactions to the venom, or
- Dispersal of the swarm, where the founder queen and her colony build a new nest somewhere else.

How can you help?

During June-October, in addition to following the advice for what to do if you find a nest, you can also help us track worker hornets which will assist us with finding more nests.

Worker hornets will be actively hunting insects in gardens, fields and hedgerows. They may also visit flowers for nectar or occasionally come to a pond to collect water when it is really hot.

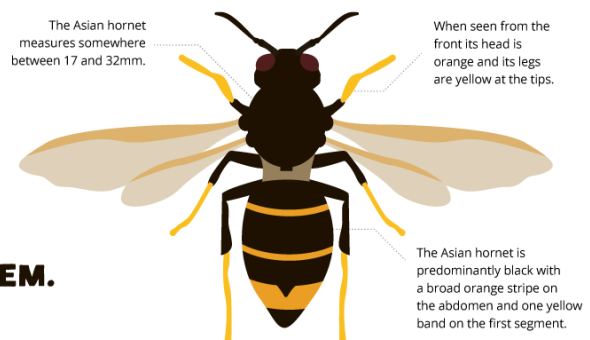
If you do spot one it is really important to take a picture (if possible) and observe the direction it flies so that we can track where the hornet's nest is.

You should then submit your finding by contacting the Asian Hornet Team on asianhornet@gov.gg or call 07839 197082.

There is lots of helpful information on Asian hornets, what they look like and what the Asian Hornet Team is doing to control this invasive species on our [dedicated webpage](#).

Please also check the [Asian Hornet Team - Guernsey Facebook page](#) for regular updates.

TRACK
DON'T TRAMPLE
ASIAN HORNETS ARE IN GUERNSEY
AND WE NEED YOUR HELP TO FIND THEM.



Email - asianhornet@gov.gg

Website - gov.gg/asianhornet

Phone - **07839 197082**