



block plan

approximate scale 1 : 500 . for identification purposes only . DO NOT SCALE OFF THIS PLAN

this location plan has been taken from a map of the Island of Guernsey dated 2004

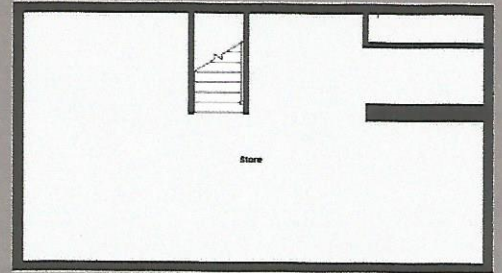
Rosewood

The Grange, St Peter Port, GY1 1RQ

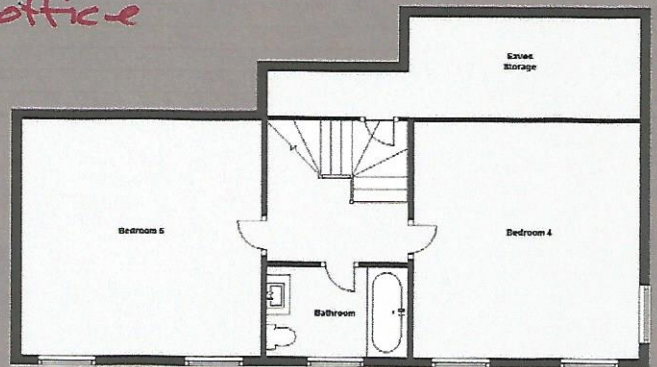
Ground Floor



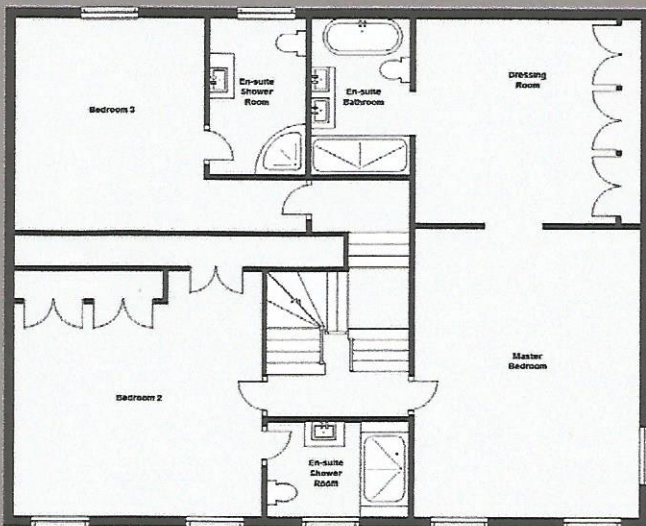
Basement



Ground Floor



First Floor



Imposing Detached house
Renovated throughout to an exceptional standard
Six bedrooms and six bath/shower rooms
Large reception space
Secure large Victorian walled garden
Parking and double garage
Convenient location
Luxury fixtures and fittings
Stunning family home



location plan

approximate scale 1 : 2500 . for identification purposes only . DO NOT SCALE OFF THIS PLAN

this location plan has been taken from a map of the Island of Guernsey dated 2004

