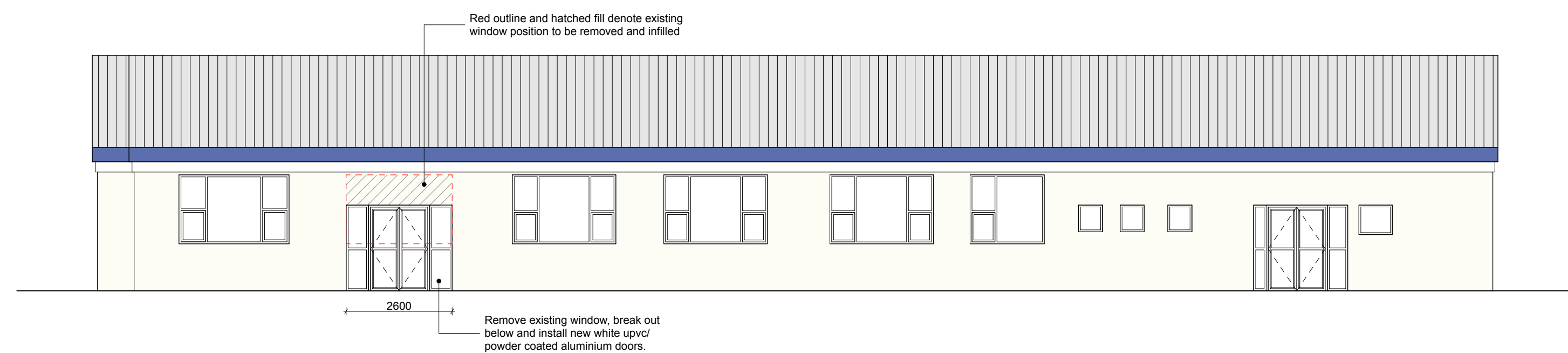
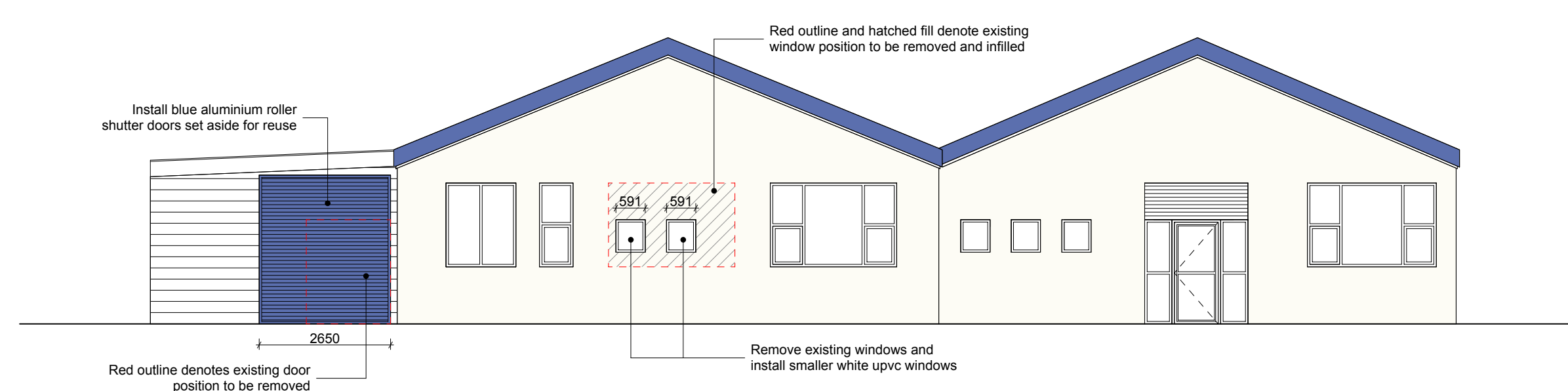


**Note:**  
This document and its design content is copyright © of Tyrrell Dowinton Associates Ltd. It shall be read in conjunction with all other associated project information including models, specifications, schedules and related consultants documents. Do not scale from documents. All dimensions to be checked on site. Immediately report any discrepancies, errors or omissions on this document to the Originator. If in doubt ASK.

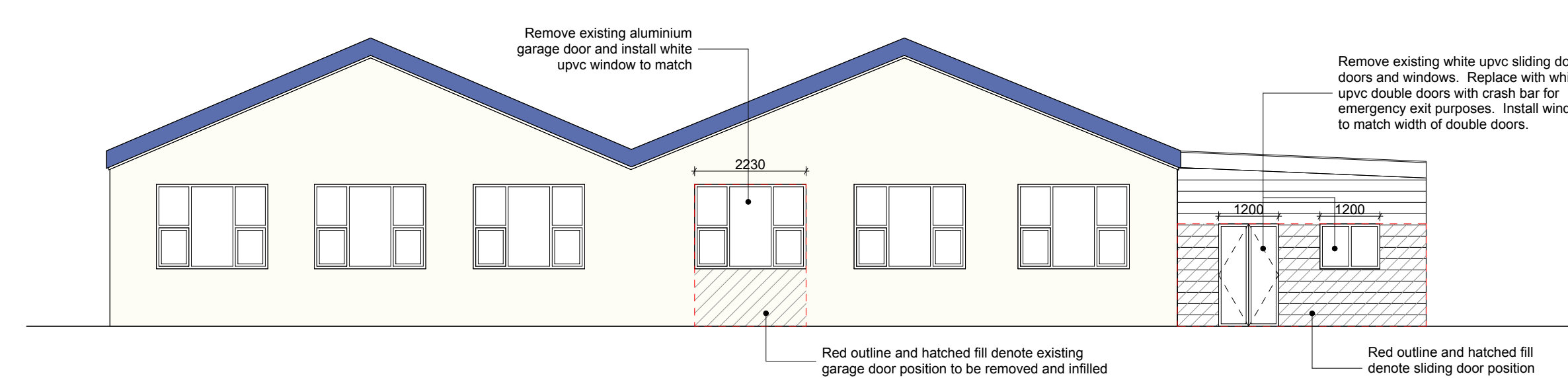
Revisions

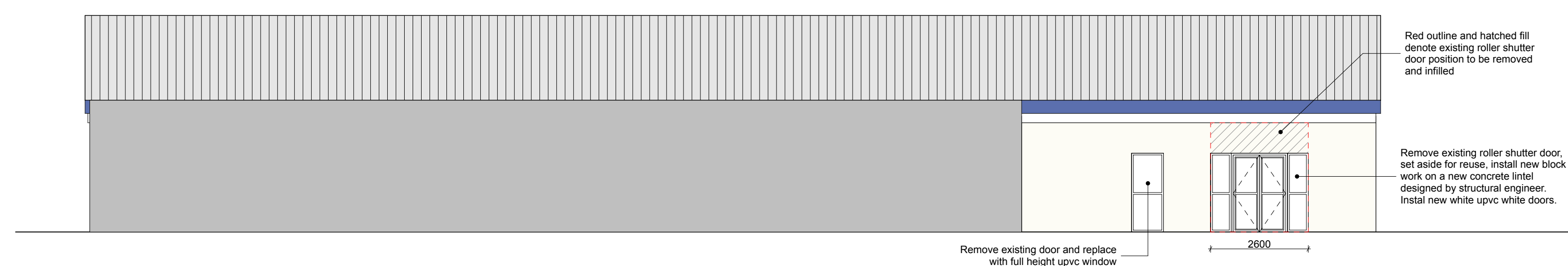
NORTH WEST ELEVATION



NORTH EAST ELEVATION



SOUTH WEST ELEVATION



SOUTH EAST ELEVATION

**Tyrrell Dowinton Associates**  
Chartered Architects  
RIBA Chartered Practice  
The Barn, Rue du Dos d'Ane, Castel, Guernsey, Channel Islands GY5 7LA  
T 01481 259959 E mail@tda.gg W www.tda.gg

**Project**  
Proposed Sub Division of Commercial Unit at:  
Former AFM Building  
Garenne Park  
Rue de la Cache  
St. Sampson  
GY2 4AF  
**Client**  
Joint Investment Properties Ltd  
Doyle Road  
St Peter Port  
Guernsey  
GY1 1RD

**Drawing title**  
Proposed Elevations

<b>Date</b> Aug 2021	<b>Drawn</b> AW
<b>Scale</b> 1:100 @ A1	<b>Checked</b>
<b>Project no.</b> 2121	<b>Drawing no.</b> 03.03