

# Guernsey Quarterly Labour Market Bulletin

Quarter 3 2010 - Issue date 15th December 2010



**POLICY COUNCIL**  
THE STATES OF GUERNSEY

## 1.1 Introduction

The Labour Market Bulletin provides a quarterly snapshot of the Guernsey labour market using claimant and contribution data provided by the States of Guernsey Social Security Department.

## 1.2 Headlines

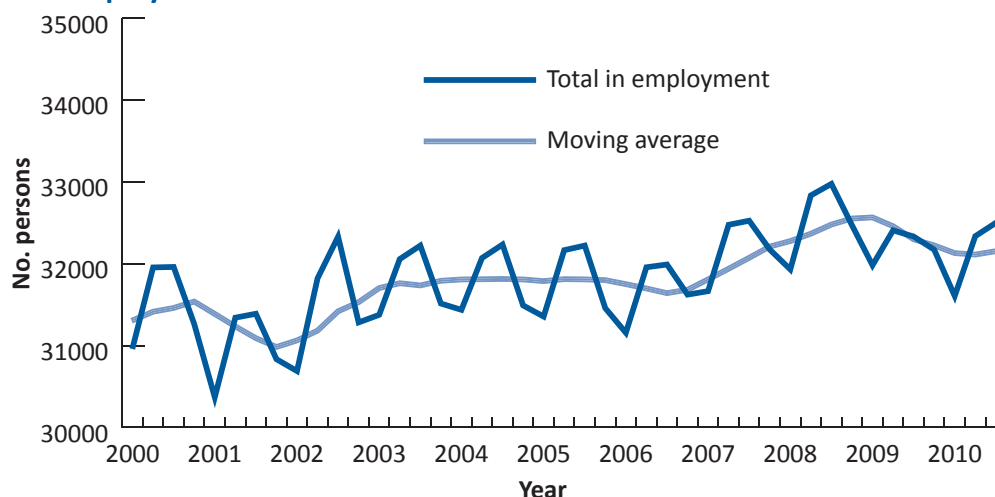
- At the end of September 2010, there were 32,499 employed and self-employed people in the Guernsey workforce, an increase of 0.5% year on year.
- There were 444 people registered as unemployed at the end of September 2010, representing 1.4% of the total workforce compared to 1.5% at the end of June 2010 and 1.4% at the end of September 2009. Applying the International Labour Organisation (ILO) definition there were 285 people unemployed; an unemployment rate of 0.9%.
- There were 2,290 employing organisations in Guernsey at the end of September 2010, 38 (1.6%) fewer than in September 2009.
- Financial Services continues to be Guernsey's largest employing sector, employing 6,906 people or 21.2% of all employed or self employed people.

## 1.3 Headline data

**Table 1.3.1: Employment, unemployment and employers**

	Q3 2008	Q4 2008	Q1 2009	Q2 2009	Q3 2009	Q4 2009	Q1 2010	Q2 2010	Q3 2010
<b>Total in employment</b>	32,975	32,470	31,981	32,407	32,332	32,171	31,605	32,336	32,499
<b>Registered unemployed</b>	284	343	447	431	440	423	498	481	444
<b>Employers</b>	2,354	2,355	2,307	2,304	2,328	2,265	2,238	2,295	2,290

**Figure 1.3.1: Employment**

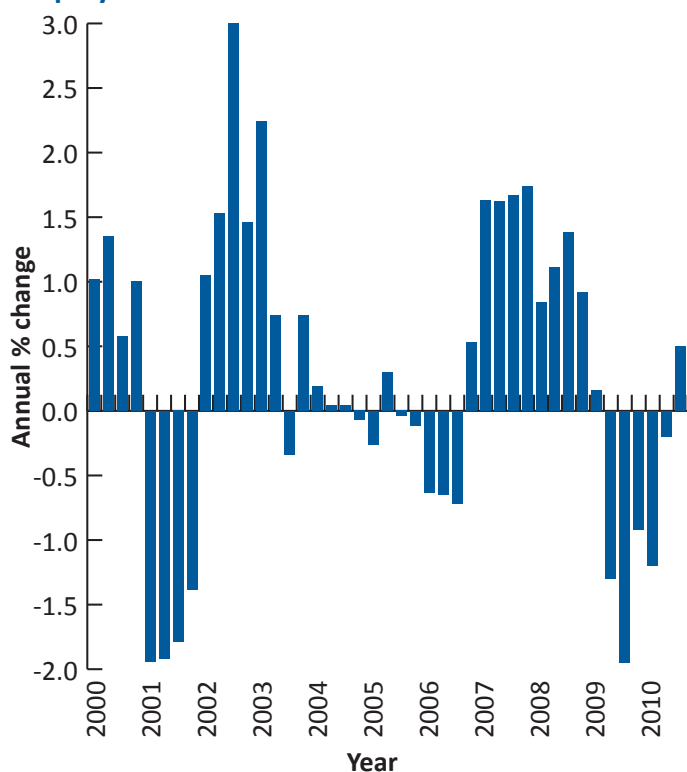


## 2.1 Employment

**Table 2.1.1: Total in employment**

Date	No. persons	Moving average	Annual % change
2006 Q3	31,990	31,640	-0.7
2006 Q4	31,622	31,681	0.5
2007 Q1	31,664	31,808	1.6
2007 Q2	32,475	31,938	1.6
2007 Q3	32,525	32,072	1.7
2007 Q4	32,173	32,209	1.7
2008 Q1	31,930	32,276	0.8
2008 Q2	32,834	32,366	1.1
2008 Q3	32,975	32,478	1.4
2008 Q4	32,470	32,552	0.9
2009 Q1	31,981	32,565	0.2
2009 Q2	32,407	32,458	-1.3
2009 Q3	32,332	32,298	-2.0
2009 Q4	32,171	32,223	-0.9
2010 Q1	31,605	32,129	-1.2
2010 Q2	32,336	32,111	-0.2
2010 Q3	32,499	32,153	0.5

**Figure 2.1.1: Annual percentage change in total employment**



Employed persons are classified by the Social Security Department as those who work for wages or a salary under a contract of service. Self employed persons are those who are in business for themselves, not under the control of an employer.

Total employment is calculated by adding the number of employed persons to the number of self employed persons.

In September 2010 there were a total of 32,499 people in employment in Guernsey, 0.5% (or 167 people) more than in September 2009 (see [table 2.1.1](#)).

Total employment in Guernsey shows seasonal variations due to more people being employed in certain sectors (eg hostelry and horticulture) during the summer. As a result of this, total employment in Guernsey is typically higher in the second and third quarters (ending June and September) than in the first and fourth quarters (ending March and December).

Trends in the four quarter average (included in [table 2.1.1](#) and shown graphically in [figure 1.3.1](#)) or annual percentage changes (see [figure 2.1.1](#)) give a clearer indication of how the level of employment has been changing over the past ten years.

In total, over the ten years ending September 2010, there has been a cumulative increase of 1.7% in the number of people in employment.

## 3.1 Unemployment

As show in [table 3.1.1](#), there were 444 people registered as unemployed (ie claiming unemployment or jobseeker benefits) in September 2010, 4 people more than the previous year.

Of those people, 285 would fit the International Labour Organisation (ILO) definition of being unemployed<sup>4</sup>, which excludes anybody on a government training scheme (such as the Community and Environmental Projects Scheme, which employed 36 people at the end of September 2010) or anybody who carries out at least one hour's paid work in a week (which could be the case for some of those claiming only supplementary jobseeker benefit).

The percentage of the total workforce registered unemployed (ie the unemployment rate) was 1.4% at the end of September 2010, the same rate as in September 2009.

The unemployment rate using the ILO definition was 0.9% at the end of September 2010, 0.1 percentage points lower than in September 2009 (see [figure 3.1.1](#)).

The latter measure is comparable (in terms of method) with the rate in Jersey, which was 2.2% in June 2010<sup>5</sup> and the UK rate, which was 7.7% at the end of September 2010<sup>6</sup>.

<sup>4</sup> See <http://www.statistics.gov.uk/statbase/Product.asp?vlnk=2054>

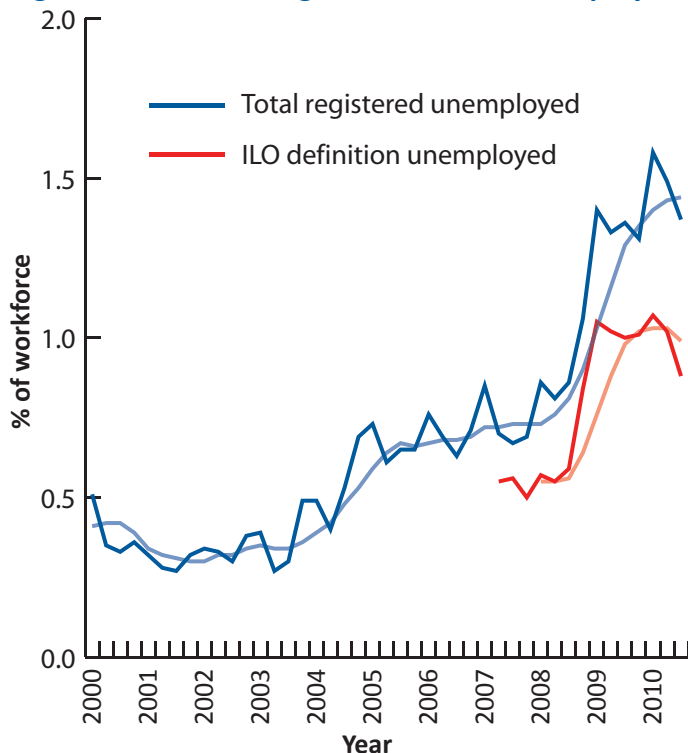
<sup>5</sup> See [www.gov.je/statistics](http://www.gov.je/statistics) (figures updated annually)

<sup>6</sup> Figures for the UK are taken from [www.statistics.gov.uk](http://www.statistics.gov.uk)

**Table 3.1.1: Number and percentage of workforce unemployed**

		No. persons		% of workforce	
		Total registered unemployed	ILO definition unemployed	Total registered unemployed	ILO definition unemployed
2006	Q3	201	-	0.6	-
2006	Q4	223	-	0.7	-
2007	Q1	269	214	0.8	0.7
2007	Q2	226	179	0.7	0.6
2007	Q3	219	181	0.7	0.6
2007	Q4	223	162	0.7	0.5
2008	Q1	274	183	0.9	0.6
2008	Q2	266	182	0.8	0.6
2008	Q3	284	196	0.9	0.6
2008	Q4	343	273	1.1	0.8
2009	Q1	447	335	1.4	1.0
2009	Q2	431	330	1.3	1.0
2009	Q3	440	324	1.4	1.0
2009	Q4	423	325	1.3	1.0
2010	Q1	498	339	1.6	1.1
2010	Q2	481	329	1.5	1.0
2010	Q3	444	285	1.4	0.9

**Figure 3.1.1: Percentage of workforce unemployed**



## 4.1 Employees and self employed

**Table 4.1.1: Employees and self employed**

		No. persons		Annual % change	
		Employees	Self employed	Employees	Self employed
2006	Q3	28,787	3,203	-1.0	2.3
2006	Q4	28,502	3,120	0.7	-0.7
2007	Q1	28,543	3,121	2.0	-2.0
2007	Q2	29,331	3,144	2.0	-1.8
2007	Q3	29,351	3,174	2.0	-0.9
2007	Q4	29,031	3,142	1.9	0.7
2008	Q1	28,773	3,157	0.8	1.2
2008	Q2	29,683	3,151	1.2	0.2
2008	Q3	29,839	3,136	1.7	-1.2
2008	Q4	29,390	3,080	1.2	-2.0
2009	Q1	28,878	3,103	0.4	-1.7
2009	Q2	29,311	3,096	-1.3	-1.7
2009	Q3	29,229	3,103	-2.0	-1.1
2009	Q4	29,112	3,059	-0.9	-0.7
2010	Q1	28,592	3,013	-1.0	-2.9
2010	Q2	29,257	3,079	-0.2	-0.5
2010	Q3	29,374	3,125	0.5	0.7

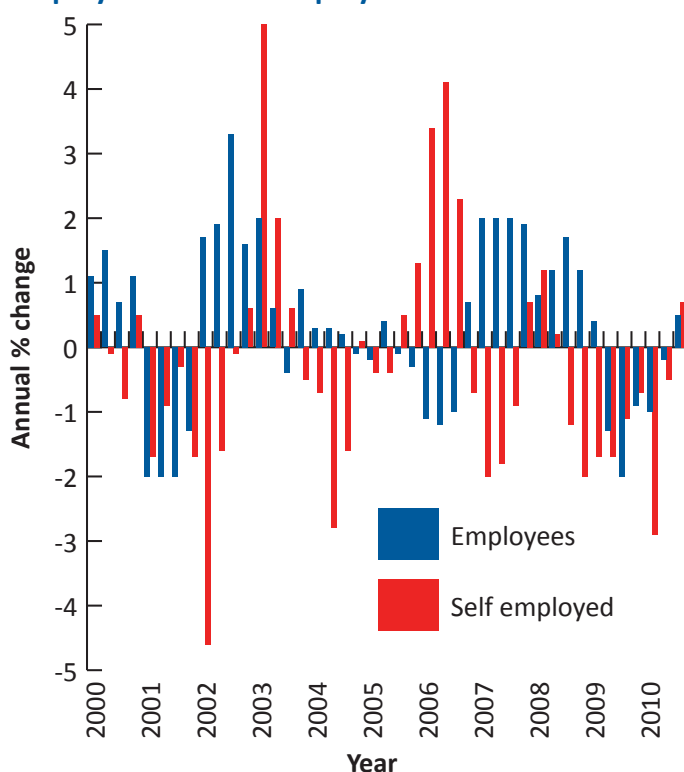
At the end of September 2010, there were 29,374 employees (ie those working for an employer) in Guernsey, 145 (or 0.5%) more than in September 2009 (see [table 4.1.1](#) and [figure 4.1.1](#)).

The number of employees is subject to the seasonal variations described on the previous page and is typically higher in the June and September, than the March and December of any given year. As expected the number of employees in September 2010 was higher (by 117 people) than in June 2010.

There were 3,125 self employed people at the end of September 2010, 22 (0.7%) more than the previous year (see [table 4.1.1](#)). The number of self employed people does not show regular seasonal increases and decreases to the same extent as the number of employees. However, there was an increase of 46 people (or 1.5%) between June and September 2010.

Of the total in employment, 9.6% were self employed in September 2010.

**Figure 4.1.1: Annual percentage change in employees and self employed**



## 4.2 Employment by gender

In September 2010, there were 14,811 females in employment, 77 (or 0.5%) more than in September 2009 (see [table 4.2.1](#) and [figure 4.2.1](#)). The number of males in employment also increased during that period; by 90 (0.5%) to 17,688.

The proportion of the workforce comprised of females was 45.6% at the end of September 2010, the same proportion as in September 2009.

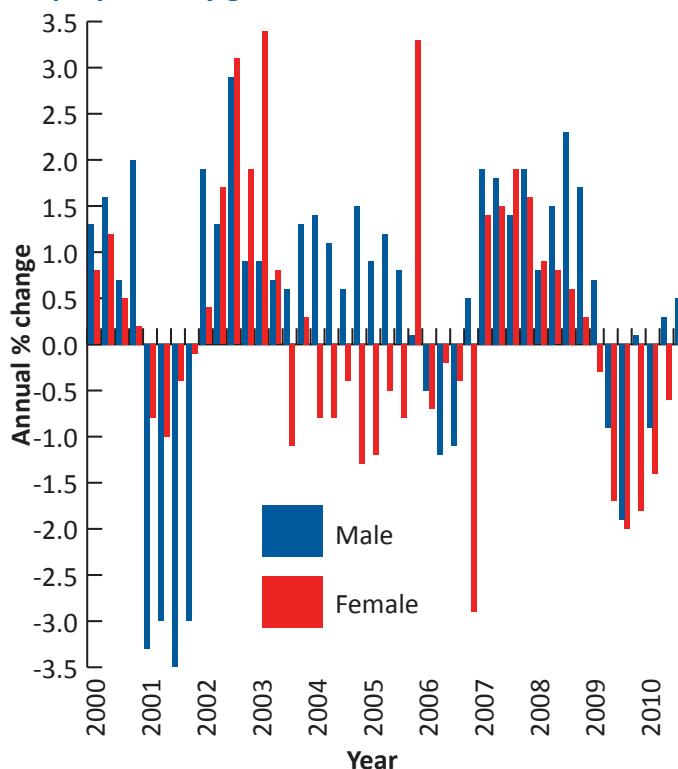
Over the past decade the number of females in employment has increased by 366 (or 2.5%), compared to an increase of 173 males (1.0%).

Please see the [Sustainable Guernsey Report](#) for more information on employment rates by age and gender, which are available annually.

**Table 4.2.1: Employment by gender**

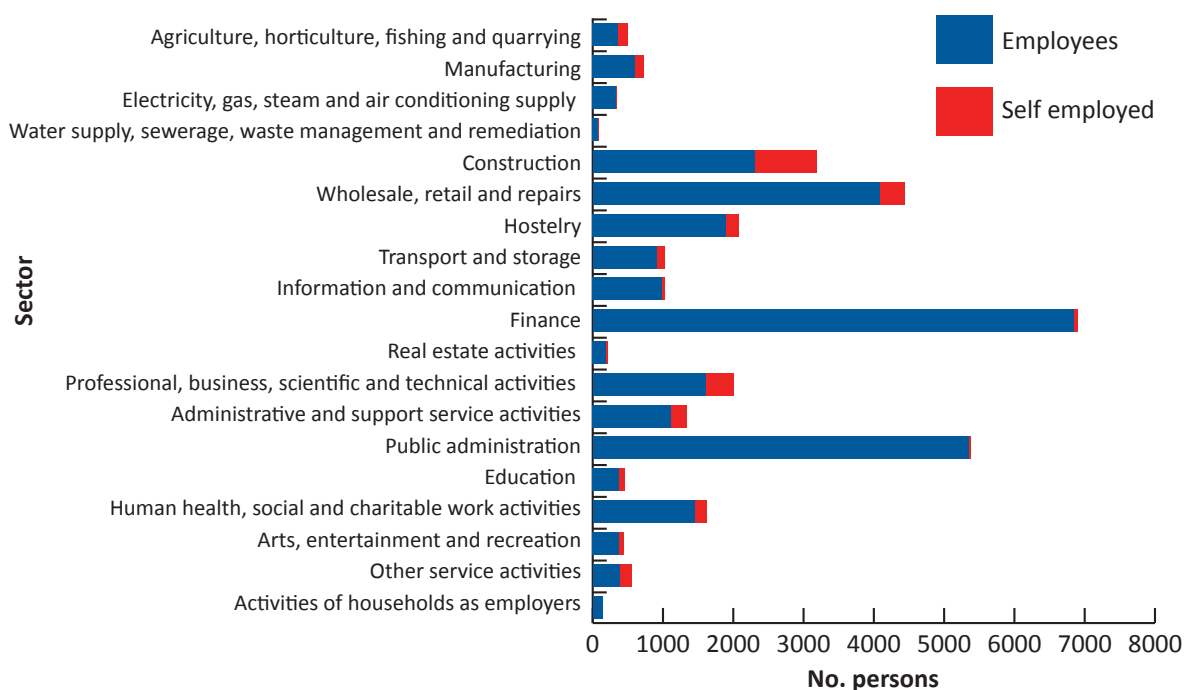
		No. persons		Annual % change	
		Female	Male	Female	Male
2006	Q3	14,475	17,515	-1.1	-0.4
2006	Q4	14,304	17,318	0.5	-2.9
2007	Q1	14,360	17,304	1.9	1.4
2007	Q2	14,741	17,734	1.8	1.5
2007	Q3	14,683	17,842	1.4	1.9
2007	Q4	14,581	17,592	1.9	1.6
2008	Q1	14,474	17,456	0.8	0.9
2008	Q2	14,966	17,868	1.5	0.8
2008	Q3	15,019	17,956	2.3	0.6
2008	Q4	14,826	17,644	1.7	0.3
2009	Q1	14,582	17,399	0.7	-0.3
2009	Q2	14,835	17,572	-0.9	-1.7
2009	Q3	14,734	17,598	-1.9	-2.0
2009	Q4	14,845	17,326	0.1	-1.8
2010	Q1	14,453	17,152	-0.9	-1.4
2010	Q2	14,878	17,458	0.3	-0.6
2010	Q3	14,811	17,688	0.5	0.5

**Figure 4.2.1: Annual percentage change in employment by gender**



## 4.3 Employment by economic sector

**Figure 4.3.1: Employment by economic sector at September 2010**



This bulletin is the eighth to use the revised coding of economic sectors. The revisions provide a more accurate and internationally comparable picture of Guernsey's economic activity by sector. An explanation of the economic sector codes and more detailed breakdown of the activities included in each sector can be found on our website [www.gov.gg/ecodes](http://www.gov.gg/ecodes).

As shown in [figure 4.3.1](#), the largest proportion (21.2%) of people in employment in Guernsey worked in the finance sector in September 2010. The annual change in employment in this sector was a decrease of 1.0% (see [table 4.4.1](#) and [figure 4.4.1](#)).

The sector which showed the largest percentage change in the number of employees and self employed was the water supply, sewerage, waste management and remediation activities sector, which had an increase of 19.2%, from 73 to 87 people.

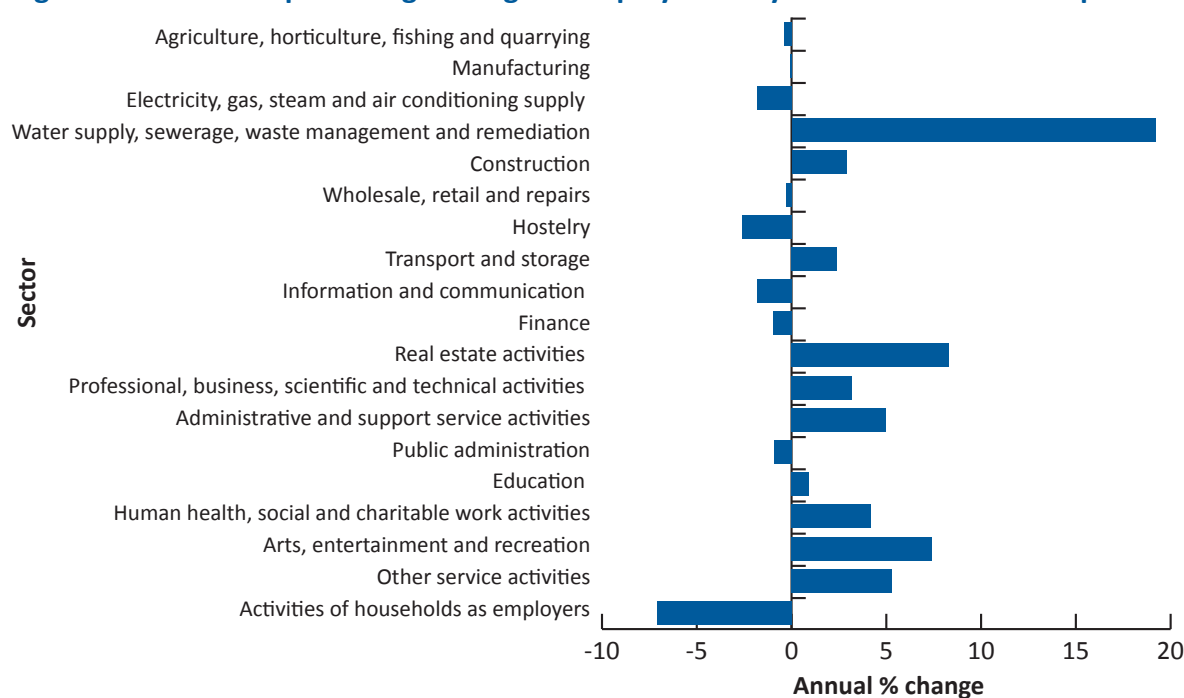
The construction sector had the highest level of self employment; 891 people (or 27.9%) in September 2010. This constituted 28.5% of the total self employed across all sectors.

## 4.4 Employees and self employed by economic sector and gender

Figure 4.4.1: Employment by economic sector at September 2010

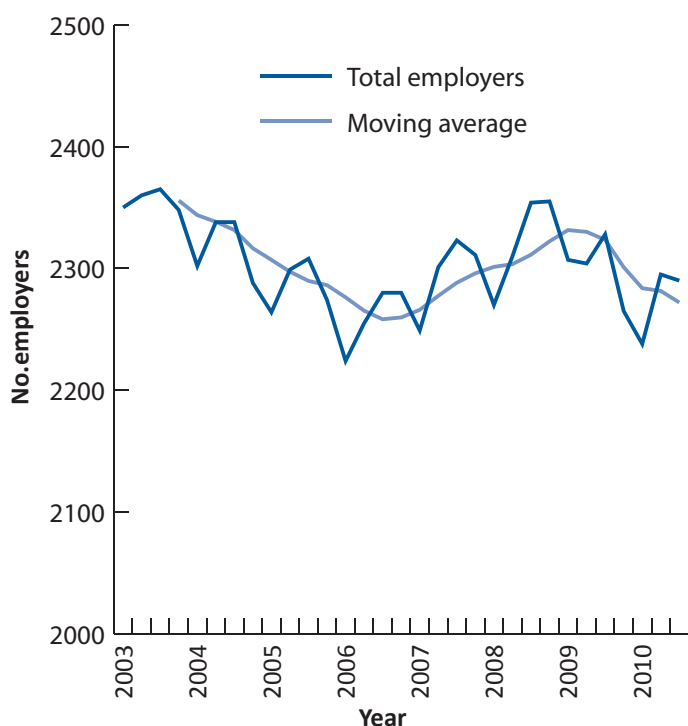
	No. employees			No. self employed			Total no. in employment	% of total for all sectors	Annual % change
	Female	Male	Total	Female	Male	Total			
Agriculture, horticulture, fishing and quarrying	190	168	358	11	134	145	503	1.5	-0.4
Manufacturing	178	425	603	23	96	119	722	2.2	-0.1
Electricity, gas, steam and air conditioning supply	60	273	333	0	3	3	336	1.0	-1.8
Water supply, sewerage, waste management and remediation activities	11	66	77	0	10	10	87	0.3	19.2
Construction	142	2,161	2,303	21	870	891	3,194	9.8	2.9
Wholesale, retail and repairs	1,744	2,334	4,078	84	279	363	4,441	13.7	-0.3
Hostelry	809	1,091	1,900	57	126	183	2,083	6.4	-2.6
Transport and storage	181	726	907	10	108	118	1,025	3.2	2.4
Information and communication	276	706	982	12	36	48	1,030	3.2	-1.8
Finance	3,804	3,034	6,838	9	59	68	6,906	21.2	-1.0
Real estate activities	98	89	187	5	16	21	208	0.6	8.3
Professional, business, scientific and technical activities	953	654	1,607	66	329	395	2,002	6.2	3.2
Administrative and support service activities	503	609	1,112	30	190	220	1,332	4.1	5.0
Public administration	3,182	2,166	5,348	4	30	34	5,382	16.6	-0.9
Education	274	96	370	75	18	93	463	1.4	0.9
Human health, social and charitable work activities	1,188	260	1,448	78	102	180	1,628	5.0	4.2
Arts, entertainment and recreation	174	203	377	25	35	60	437	1.3	7.4
Other service activities	304	80	384	119	53	172	556	1.7	5.3
Activities of households as employers	100	42	142	2	0	2	144	0.4	-7.1
Other	9	11	20	0	0	0	20	0.1	-4.8
<b>Total for all sectors</b>	<b>14,180</b>	<b>15,194</b>	<b>29,374</b>	<b>631</b>	<b>2,494</b>	<b>3,125</b>	<b>32,499</b>	<b>100</b>	<b>0.5</b>

Figure 4.4.1: Annual percentage change in employment by economic sector at September 2010



## 5.1 Employers by size

**Figure 5.1.1: Total employers**



At the end of September 2010, there were 2,290 employers in Guernsey, 38 (1.6%) less than the previous year (see [figure 5.1.1](#) and [table 5.1.1](#)).

There were seven organisations employing 250 or more people in September 2010, one less than in September the previous year.

The majority of sectors saw a decrease in employers over the year ending September 2010 (see [table 5.2.1](#)). Please note that some of the percentage changes are based on small numbers and can therefore seem large relative to the actual change in numbers.

Of the organisations which employed more than 50 people, 42 (34.4%) were in the finance sector at the end of September 2010.

**Table 5.1.1: Employers by size (number of employees)**

		No. employers by size (number of employees)								Total no. employers	Annual % change
		1	2 to 5	6 to 10	11 to 25	26 to 50	51 to 100	101 to 250	250+		
2008	Q2	595	830	366	284	120	69	38	8	2,310	0.4
2008	Q3	616	822	372	300	126	70	39	9	2,354	1.3
2008	Q4	632	842	359	291	116	72	34	9	2,355	1.9
2009	Q1	620	838	351	278	110	68	34	8	2,307	1.6
2009	Q2	597	841	362	281	111	71	33	8	2,304	-0.3
2009	Q3	596	851	359	289	112	76	37	8	2,328	-1.1
2009	Q4	589	815	366	264	120	69	35	7	2,265	-3.8
2010	Q1	606	788	355	265	113	73	32	6	2,238	-3.0
2010	Q2	606	822	370	264	116	79	31	7	2,295	-0.4
2010	Q3	588	811	370	284	115	79	36	7	2,290	-1.6

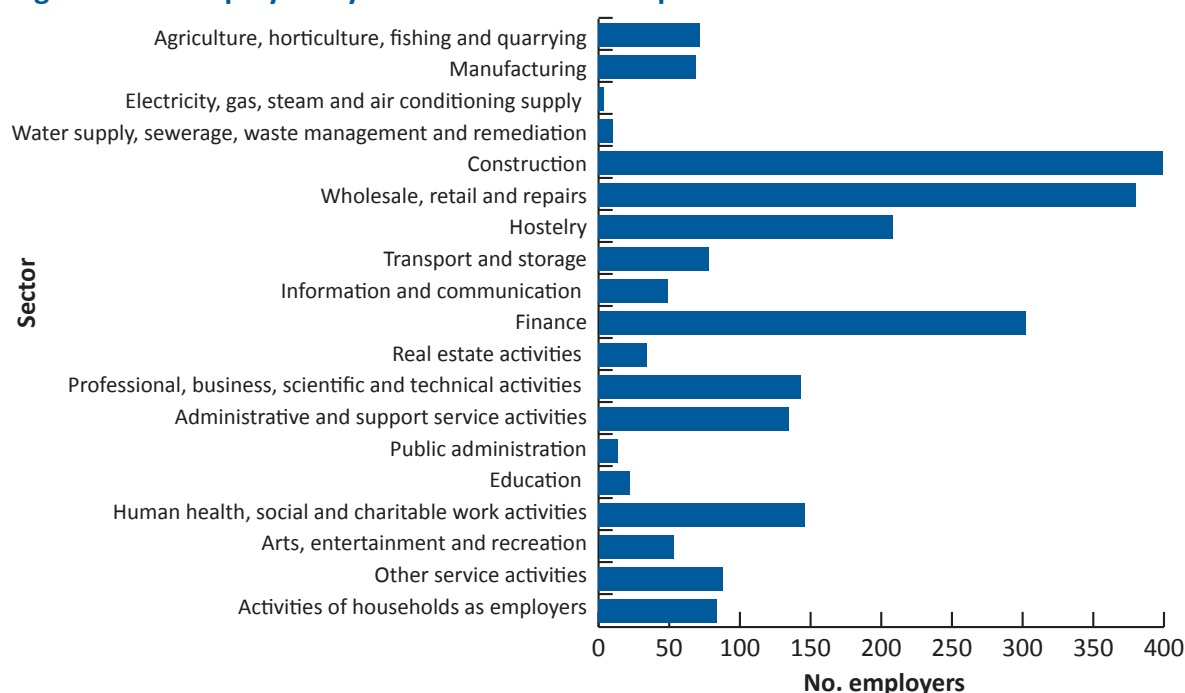


## 5.2 Employers by economic sector and size

Figure 5.2.1: Employers by economic sector and size (number of employees)

	No. employers by size (number of employees)					% of total for all sectors	Annual % change
	1 to 5	6 to 25	26 to 50	51 or more	Total		
Agriculture, horticulture, fishing and quarrying	51	18	2	1	72	3.1	-4.0
Manufacturing	37	28	1	3	69	3.0	-4.2
Electricity, gas, steam and air conditioning supply	1	1	0	2	4	0.2	0.0
Water supply, sewerage, waste management and remediation activities	7	2	0	1	10	0.4	66.7
Construction	276	111	4	8	399	17.4	-2.7
Wholesale, retail and repairs	234	112	16	18	380	16.6	-0.8
Hostelry	110	76	14	8	208	9.1	-4.6
Transport and storage	44	20	10	4	78	3.4	6.8
Information and communication	30	11	3	5	49	2.1	-3.9
Finance	122	105	33	42	302	13.2	-0.7
Real estate activities	25	8	1	0	34	1.5	-5.6
Professional, business, scientific and technical activities	83	46	6	8	143	6.2	0.7
Administrative and support service activities	88	32	9	6	135	5.9	-4.9
Public administration	10	1	0	3	14	0.6	-6.7
Education	13	4	1	4	22	1.0	0.0
Human health, social and charitable work activities	87	39	13	7	146	6.4	2.8
Arts, entertainment and recreation	32	19	1	1	53	2.3	-7.0
Other service activities	71	15	1	1	88	3.8	23.9
Activities of households as employers	78	6	0	0	84	3.7	-20.0
<b>Total for all sectors</b>	<b>1,399</b>	<b>654</b>	<b>115</b>	<b>122</b>	<b>2,290</b>	<b>1.0</b>	<b>-1.6</b>

Figure 5.2.1: Employers by economic sector at September 2010



## 6.1 Contact details and further information

A summary of the business activities which make up each of the nineteen economic sectors used throughout this bulletin is available online at: [www.gov.gg/ecodes](http://www.gov.gg/ecodes).

You may also be interested in other publications from the Policy and Research Unit, which are all available online at [www.gov.gg/pru](http://www.gov.gg/pru).

Please contact Helen Walton (Senior Research Officer) for further information.

Policy and Research Unit  
Sir Charles Frossard House  
La Charroterie  
St Peter Port  
Guernsey  
GY1 1FH

Tel: (01481) 717292

Fax: (01481) 713787

e-mail: [policy.research@gov.gg](mailto:policy.research@gov.gg)

web: [www.gov.gg/pru](http://www.gov.gg/pru)