

# Guernsey Quarterly Residential Property Prices Bulletin

Quarter 1 2013 - Issue date 8th May 2013



**POLICY COUNCIL**  
THE STATES OF GUERNSEY

## 1.1 Introduction

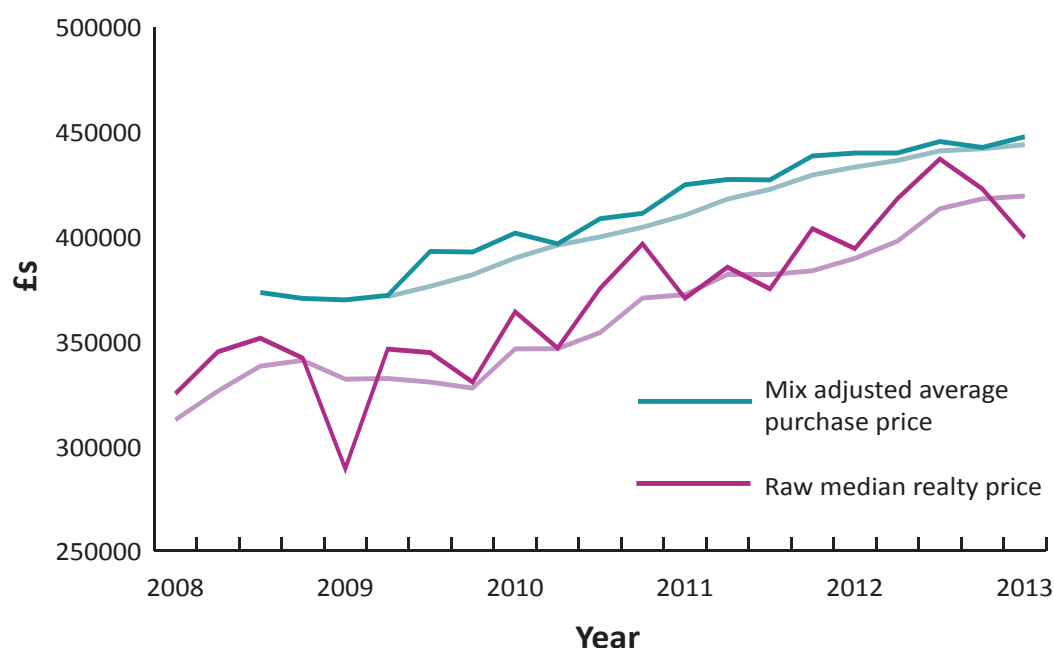
The Guernsey Residential Property Prices Bulletin measures average price changes in residential properties sold on the Island each quarter and provides a headline analysis of trends in average prices.

Data compiled on the Island's housing stock in 2011 enabled the development of new methods for calculating average purchase prices. The mix adjusted averages are much less susceptible to changes from one quarter to the next in the profile of properties sold.

## 1.2 Headlines

- The mix adjusted average purchase price\* for local market properties was £447,628 in the first quarter of 2013, 1.8% higher than the same quarter of the previous year.
- There were 142 local market transactions during the first quarter of 2013, 16% less than in the first quarter of 2012 when the total for local market transactions was 170.
- The raw median price (realty only) of local market transactions was £399,500 in the first quarter.
- The raw median price (realty only) of the 10 open market transactions in the first quarter of 2013 was £990,000 compared to £966,755 in the first quarter of 2012, when there were 6 transactions.

**Figure 1.2.1: Local market purchase prices**



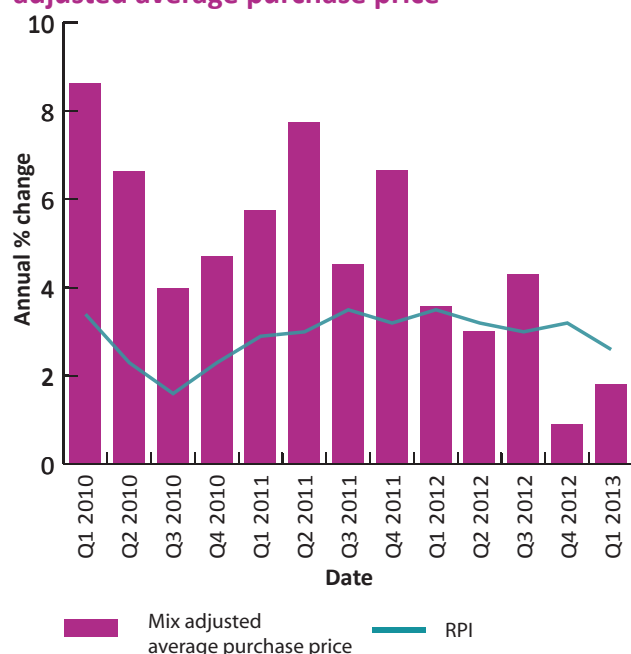
\* See over and [page 8](#) for more detail on the headline measure, the methodology used and how it differs from the median, which was previously the headline measure.

## 2.1 Local market purchases - mix adjusted average

**Table 2.1.1: Mix adjusted average purchase price**

Date	Mix adjusted average purchase price	Quarterly percentage change	Annual percentage change
Q1 2011	£424,714	3.3%	5.7%
Q2 2011	£427,226	0.6%	7.7%
Q3 2011	£427,025	0.0%	4.5%
Q4 2011	£438,432	2.7%	6.7%
Q1 2012	£439,837	0.3%	3.6%
Q2 2012	£439,861	0.0%	3.0%
Q3 2012	£445,326	1.2%	4.3%
Q4 2012	£442,508	-0.6%	0.9%
Q1 2013	£447,628	1.2%	1.8%

**Figure 2.1.1: Annual percentage change in mix adjusted average purchase price**



**Table 2.1.2: Four quarter average mix adjusted average purchase price**

Date	Four quarter average mix adjusted average purchase price	Quarterly percentage change	Annual percentage change
Q1 2011	£410,200	1.4%	5.2%
Q2 2011	£417,879	1.9%	5.5%
Q3 2011	£422,510	1.1%	5.7%
Q4 2011	£429,349	1.6%	6.2%
Q1 2012	£433,130	0.9%	5.6%
Q2 2012	£436,289	0.7%	4.4%
Q3 2012	£440,864	1.0%	4.3%
Q4 2012	£441,883	0.2%	2.9%
Q1 2013	£443,831	0.4%	2.5%

The local market mix adjusted average purchase price is a measure of the average cost (including both realty and personalty) of purchasing a property in Guernsey.

Realty relates to fixed assets, e.g. buildings and land, and personalty is the term used for the moveable assets, such as carpets, fixtures and fittings. The historically published median prices (included on [page 6](#)) reflect the realty only, as recorded by the Greffe. The new mix adjusted average prices include a measure of personalty, which is included in most property purchases, better reflecting the actual prices paid for purchases.

Also, in the new method, transactions are weighted according to their type and number of bedrooms to reflect the profile (or “mix”) of all the Island’s owner occupied and buy to let property units. The resulting average, presented in [Table 2.1.1](#) and represented graphically by the green line in [Figure 1.2.1 on Page 1](#), is not affected by changes in the types of properties sold from one quarter to the next in the way that the median price (on [page 6](#)) can be.

This measure was published for the first time in the first quarter of 2011. Average prices calculated using this methodology are available from the fourth quarter of 2008 onwards.

It should be noted that the measure is still susceptible to fluctuations due to the size, quality and location of properties of any particular type and number of bedrooms varying from one quarter to the next. Due to the relatively small sample sizes it is not possible to eliminate these variations completely. However, the mix related variations in this measure are greatly reduced, compared to the raw median (see [Page 6](#)), giving a better picture of the trend.

As shown in [Table 2.1.1](#), in the first quarter of 2013, the mix adjusted average purchase price was £447,628, which was 1.8% higher than the same quarter of 2012. The annual percentage change in house prices was below the annual percentage change in the Retail Price Index (a measure of inflation).

## 2.2 Local market purchases - types and bonds

The “mix” of property transactions each quarter is shown in **Table 2.2.1**. (N.B. due to rounding the total figure may not always add up to precisely 100%) and illustrated in **Figure 2.2.1**.

The proportion of transactions in each category varies from one quarter to the next. In the first quarter of 2013, the highest proportion of transactions was three bedroom bungalows, which constituted 17%.

Definitions of the types of properties which are included in the categories used (apartment, house and bungalow) are provided on the last page of this bulletin.

Properties in the “other” category are those which do not fall into the categories shown in the table above, either because they have a different (or unknown) number of bedrooms or because they are a different type of property. These are excluded from the mix adjusted calculations described on **page 2**.

The loan to value is calculated for each of the property transactions for which a bond is registered with the Greffe. The median value of those figures each quarter is shown in **Table 2.2.2**.

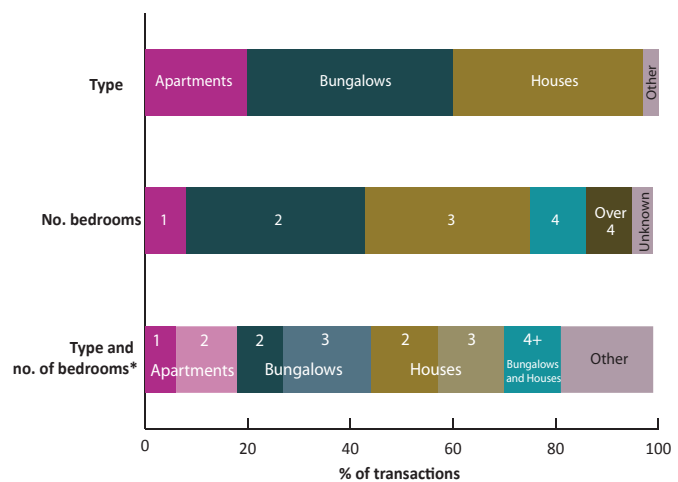
In the first quarter of 2012, the average loan to value was 78%, 3 percentage points higher than in the first quarter of 2012 when the average loan to value was 75%.

Since first measured in the third quarter of 2009, the average loan to value has remained relatively constant, varying within a 6% range (see **Figure 2.2.2**).

**Table 2.2.1: Percentage of transactions by type and number of bedrooms**

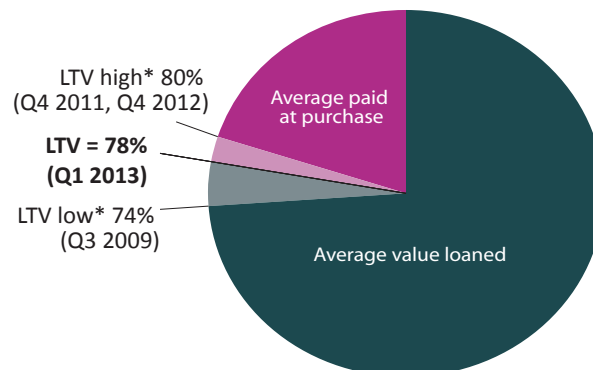
Date	Percentage of total transactions by type and number of bedrooms							
	Apartment		Bungalow		House		House / Bungalow	Other
	1	2	2	3	2	3	4	
Q1 2011	7%	6%	10%	15%	16%	15%	13%	18%
Q2 2011	10%	10%	12%	16%	11%	15%	11%	13%
Q3 2011	11%	15%	10%	16%	11%	13%	11%	15%
Q4 2011	15%	4%	11%	14%	10%	15%	10%	20%
Q1 2012	9%	11%	15%	12%	11%	12%	13%	18%
Q2 2012	10%	10%	7%	16%	10%	16%	14%	18%
Q3 2012	5%	10%	9%	20%	10%	12%	13%	21%
Q4 2012	7%	10%	8%	16%	14%	14%	15%	15%
Q1 2013	6%	12%	9%	17%	13%	13%	11%	18%

**Figure 2.2.1: Percentage of transactions by type and number of bedrooms during 1st Quarter 2013**



\*As used in mix-adjusted calculations and presented in **Table 2.2.1**

**Figure 2.2.2: Average loan to value**



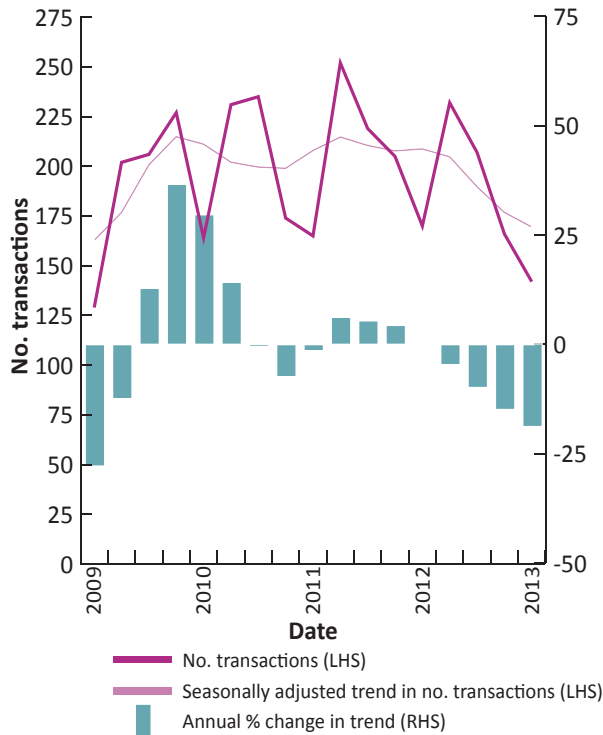
\*High and low since data collected Q3 2009

**Table 2.2.2: Average loan to value**

Date	Q1 2011	Q2 2011	Q3 2011	Q4 2011	Q1 2012	Q2 2012	Q3 2012	Q4 2012	Q1 2013
Median bond as a % of purchase price	75%	75%	75%	80%	75%	77%	79%	80%	78%

## 3.1 Local market purchases - volumes by price

**Figure 3.1.1: Number of transactions and annual % change**



**Table 3.1.1** provides information on the number of local market transactions recorded by the States of Guernsey Greffe each quarter. These transactions are all included in the calculation of the raw median, lower and upper quartile prices.

In the first quarter of 2013, the Greffe recorded 142 local market transactions, which was 28 less than in the same quarter of 2012 (see **Figure 3.1.1**).

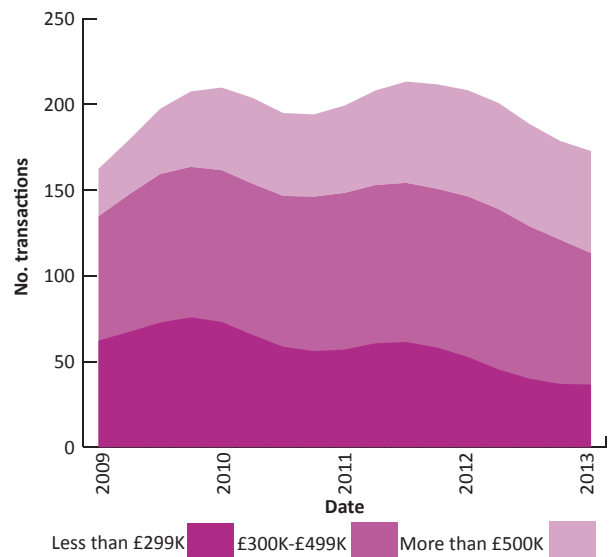
**Table 3.1.1** shows the number of local market property transactions each quarter by (realty only) price band, which can vary significantly from one quarter to the next. A seasonally adjusted trend in transactions by (realty only) price band is presented in **Figure 3.1.2**.

During the first quarter of 2013, the largest number of transactions (40) was in the £300,000 to £399,999 value band. There were two transactions of over £1 million.

**Table 3.1.1: Number of transactions by realty price (in £,000s)**

Date	Less than 200	200 to 299	300 to 399	400 to 499	500 to 599	600 to 999	More than 999	Total
Q1 2011	11	43	38	38	11	20	4	165
Q2 2011	17	53	64	46	33	35	4	252
Q3 2011	6	55	65	33	32	25	3	219
Q4 2011	14	45	42	43	29	24	8	205
Q1 2012	7	34	46	36	16	30	1	170
Q2 2012	13	45	47	54	35	26	12	232
Q3 2012	9	29	46	55	21	39	8	207
Q4 2012	8	27	39	40	23	26	3	166
Q1 2013	5	26	40	23	22	24	2	142

**Figure 3.1.2: Seasonally adjusted trend in number of transactions by realty price**



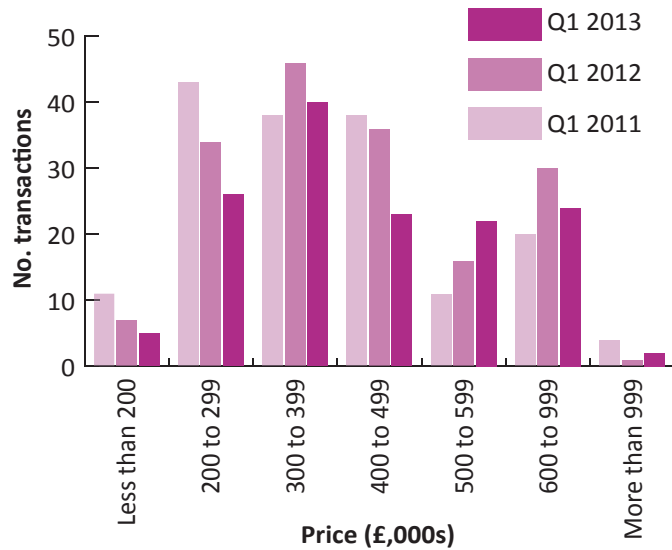
### 3.1 Local market purchases - volumes by price

The number of transactions in each realty price band is shown as a distribution graph in **Figure 3.1.3**. It provides a comparison between the distribution of transactions in the first quarters of 2011, 2012 and 2013.

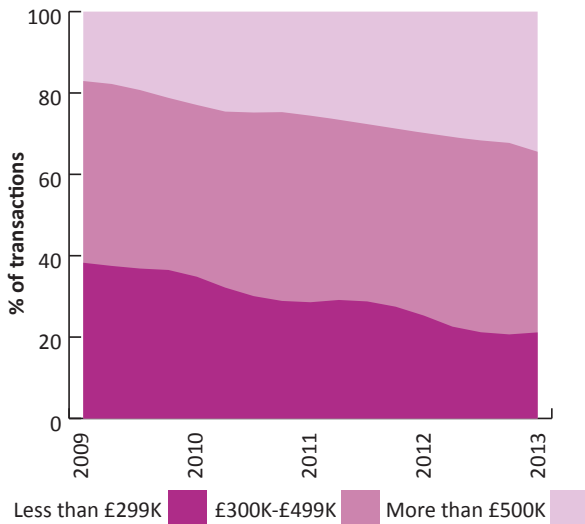
The distribution of sales in the first quarter of 2013 shows a peak in the £300,000 to £399,999 category, the same as in the first quarter of 2012. By contrast the first quarter of 2011 shows a peak in the £200,000 to £299,999 category. This reflects the decreasing trend in the proportion of sales in the less than £299,000 category illustrated in **Figure 3.1.4**.

The distribution of transactions by price band is presented as percentages in **Table 3.1.2**. (N.B. due to rounding the total figure may not always add up to precisely 100%.)

**Figure 3.1.3: Number of transactions by realty price (in £,000s)**



**Table 3.1.4: Seasonally adjusted trend in percentage of transactions by realty price**



**Table 3.1.2: Percentage of transactions by realty price (in £,000s)**

Date	Less than 200	200 to 299	300 to 399	400 to 499	500 to 599	600 to 999	More than 999	Total
Q1 2011	7%	26%	23%	23%	7%	12%	2%	100%
Q2 2011	7%	21%	25%	18%	13%	14%	2%	100%
Q3 2011	3%	25%	30%	15%	15%	11%	1%	100%
Q4 2011	7%	22%	20%	21%	14%	12%	4%	100%
Q1 2012	4%	20%	27%	21%	9%	18%	1%	100%
Q2 2012	6%	19%	20%	23%	15%	11%	5%	100%
Q3 2012	4%	14%	22%	27%	10%	19%	4%	100%
Q4 2012	5%	16%	23%	24%	14%	16%	2%	100%
Q1 2013	4%	18%	28%	16%	15%	17%	1%	99%

## 4.1 Local market purchases - raw median, lower quartile and upper quartile

**Table 4.1.1: Median realty price**

Date	Median realty purchase price	Four quarter average	Annual percentage change in four quarter average	Five year percentage change in four quarter average
Q1 2011	£370,500	£372,250	7.5%	34.2%
Q2 2011	£385,375	£381,906	10.2%	34.2%
Q3 2011	£375,000	£381,844	7.8%	31.1%
Q4 2011	£403,750	£383,656	3.5%	28.3%
Q1 2012	£394,250	£389,594	4.7%	28.8%
Q2 2012	£418,000	£397,750	4.1%	31.5%
Q3 2012	£437,000	£413,250	8.2%	36.6%
Q4 2012	£422,750	£418,000	9.0%	35.9%
Q1 2013	£399,500	£419,313	7.6%	34.2%

**Table 4.1.2: Lower quartile realty price**

Date	Lower quartile realty purchase price	Four quarter average	Annual percentage change in four quarter average	Five year percentage change in four quarter average
Q1 2011	£279,300	£284,919	11.8%	32.3%
Q2 2011	£287,250	£291,419	13.4%	32.4%
Q3 2011	£289,750	£286,669	6.6%	28.4%
Q4 2011	£280,250	£284,138	1.9%	24.3%
Q1 2012	£308,750	£291,500	2.3%	27.3%
Q2 2012	£299,813	£294,641	1.1%	28.3%
Q3 2012	£323,950	£303,191	5.8%	30.1%
Q4 2012	£326,667	£314,795	10.8%	30.9%
Q1 2013	£314,688	£316,279	8.5%	27.7%

**Table 4.1.3: Upper quartile realty price**

Date	Upper quartile realty purchase price	Four quarter average	Annual percentage change in four quarter average	Five year percentage change in four quarter average
Q1 2011	£475,000	£488,384	4.8%	32.6%
Q2 2011	£522,500	£502,134	5.5%	32.5%
Q3 2011	£509,000	£504,697	4.4%	30.6%
Q4 2011	£522,500	£507,250	1.6%	26.9%
Q1 2012	£534,375	£522,094	6.9%	29.1%
Q2 2012	£533,188	£524,766	4.5%	29.2%
Q3 2012	£574,875	£541,234	7.2%	33.5%
Q4 2012	£547,650	£547,522	7.9%	32.8%
Q1 2013	£554,563	£552,569	5.8%	31.8%

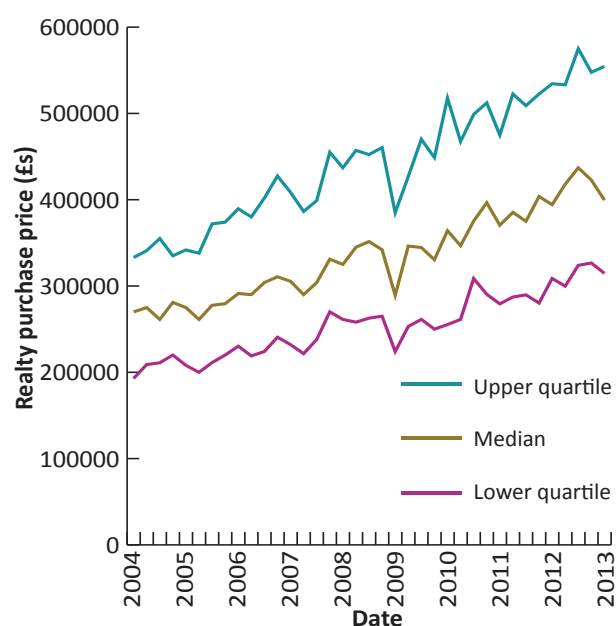
This page provides (for comparison with previously published figures) the raw median, lower quartile and upper quartile prices of the transactions during each quarter. They are based on the (realty only) transaction prices recorded by the Greffe and are not mix adjusted. As such, and due to the small sample size, they are highly susceptible to changes in the profile of types of property transactions from one quarter to the next.

**Tables 4.1.1, 4.1.2 and 4.1.3** show the price of a property (when they have been ranked in price order) at the middle (median), the first quarter mark (lower quartile) and the third quarter mark (upper quartile) of transactions respectively.

The four quarter average median realty purchase price of the property transactions during the first quarter of 2013 was £419,313, which was 7.6% higher than in the first quarter of 2012 and 34.2% higher than the same quarter of 2008.

The interquartile range (i.e. the difference between the upper and lower quartile values) was £239,875 in the first quarter of 2013, compared to £175,750 during the same quarter of 2008.

**Figure 4.1.1: Lower quartile, median and upper quartile realty prices**



## 5.1 Open market purchases - raw median

Average residential property prices on the open market tend to fluctuate more than local market prices due to the very wide ranging sale types and prices and the small number of transactions. Care must be taken when interpreting such volatile trends. Values of open market property sales are shown in **Table 5.1.1** and **Figure 5.1.1**.

The raw median open market price (calculated using the same method as the local market raw median i.e. representing realty only) was £990,000 in the first quarter of 2013.

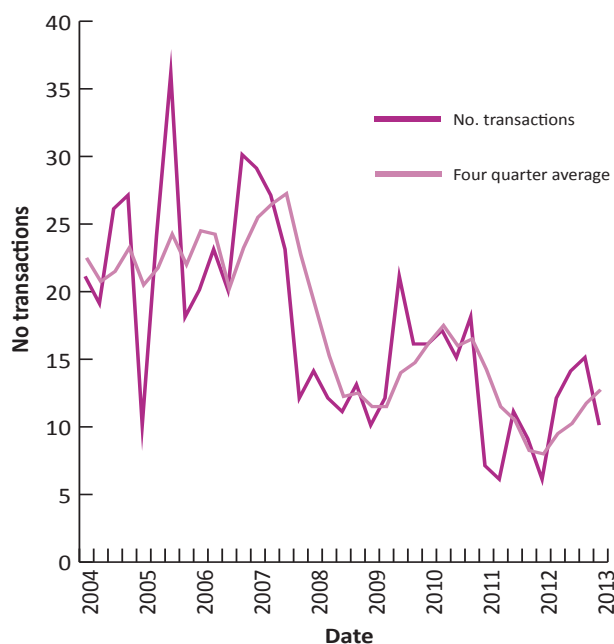
The four quarter average (shown graphically in **Figure 5.1.1**), which reduces the effect of seasonal fluctuations, decreased by 9.1% between the first quarter of 2012 and the first quarter of 2013.

Over the past five years the open market four quarter average has decreased by 2.2%.

There were 10 open market transactions during the quarter, compared to 6 during the first quarter of the previous year (shown in **Table 5.1.2**).

The number of transactions as a percentage of all open market (part A) property units (i.e. turnover) is also presented in **Table 5.1.2**. The turnover of open market properties was 0.6% in the first quarter of 2013.

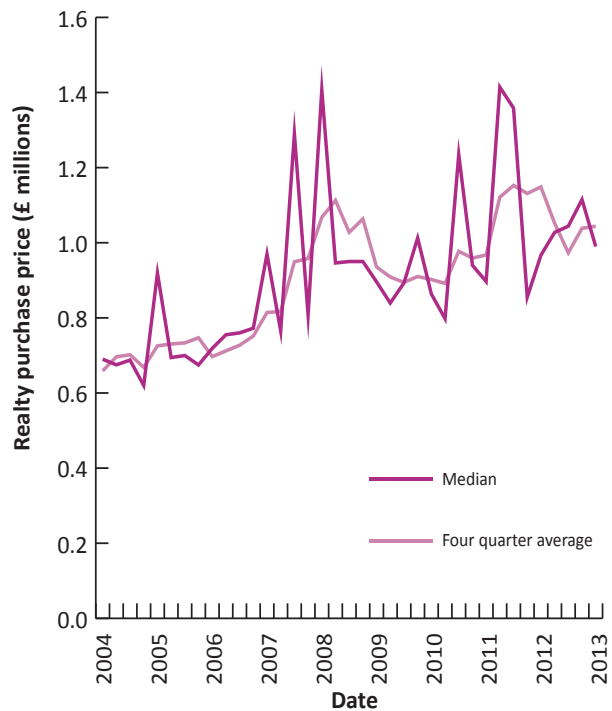
**Figure 5.1.2: Open market transaction volumes**



**Table 5.1.1: Open market median realty price**

Date	Median realty purchase price	Four quarter average	Annual percentage change in four quarter average	Five year percentage change in four quarter average
Q1 2011	£896,800	£967,450	7.2%	38.8%
Q2 2011	£1,414,375	£1,121,544	25.8%	57.5%
Q3 2011	£1,358,500	£1,152,419	17.9%	58.5%
Q4 2011	£855,000	£1,131,169	17.9%	50.5%
Q1 2012	£966,775	£1,148,663	18.7%	41.0%
Q2 2012	£1,027,500	£1,051,944	-6.2%	28.8%
Q3 2012	£1,044,125	£973,350	-15.5%	2.5%
Q4 2012	£1,115,000	£1,038,350	-8.2%	8.4%
Q1 2013	£990,000	£1,044,156	-9.1%	-2.2%

**Figure 5.1.1: Open market median realty price**



**Table 5.1.2: Open market transaction volumes**

Date	No. transactions	No. transactions as a percentage of total open market units
Q1 2011	7	0.4%
Q2 2011	6	0.4%
Q3 2011	11	0.7%
Q4 2011	9	0.6%
Q1 2012	6	0.4%
Q2 2012	12	0.7%
Q3 2012	14	0.9%
Q4 2012	15	0.9%
Q1 2013	10	0.6%

## 6.1 Methodology

There are two key differences between the old (median) and new (mix adjusted) price measures:

1. The mix adjusted measure reflects the price of both realty and personalty, whereas the median reflects realty only.
2. The mix adjusted measure uses weighting to reduce fluctuations due to changes in the profile of properties sold from one quarter to the next. There is no adjustment to account for the changing profile in the median.

In order to calculate an overall average, first the average purchase price (realty plus personalty) is calculated for each category separately. Each of these averages is then weighted by category to reflect the proportions of the whole Island's owner occupied and rented housing stock (see the *Guernsey Annual Housing Stock Bulletin* via [www.gov.gg/property](http://www.gov.gg/property)). The weighted prices are combined to give the mix adjusted average.

The weights are updated annually in line with changes to the Island's housing stock.

Seven categories of property are used in the calculation of the mix adjusted measure: 1 and 2 bedroom apartments, 2 and 3 bedroom houses, 2 and 3 bedroom bungalows and (combined as one category) 4 bedroom houses and bungalows.

The building types (apartment, bungalow, house) are determined by the property's physical attributes and proximity to other buildings:

**Apartment** is the title used for a unit of accommodation that is attached to or contained within a larger building (the remainder of which may or may not be used for domestic purposes). This category covers flats, bedsits, wings, annexes, maisonettes, dower units and similar, where the apartment unit has a separate postal address to other units within the building. These units can span one or more stories.

**Bungalow** is the title used for a property unit (including chalet bungalows and cottages), which has one or one and a half storeys, is not contained within a larger building and can be detached, semi-detached or terraced. It can also have an apartment attached to or contained within it (e.g. a wing or a flat). Each unit is identified by having a separate postal address.

Units which have two or more storeys and (as per bungalows), are not contained within a larger building, can be detached, semi-detached or terraced and can have an apartment attached or contained within them, are referred to as **houses**.

## 7.1 Contact details and further information

All Policy and Research Unit publications are available via [www.gov.gg/pru](http://www.gov.gg/pru).

Please contact Helen Walton (Research Section Manager) for further information.

Tel: (01481) 717240

Fax: (01481) 713787

e-mail: [policy.research@gov.gg](mailto:policy.research@gov.gg)

web: [www.gov.gg/pru](http://www.gov.gg/pru)