



HOME

A STATES OF GUERNSEY GOVERNMENT DEPARTMENT

the
**CRIME &
JUSTICE**
survey results 2013

Contents

Ministers Foreword	2
Introduction	3
Profile of Respondents	4
Crime and Law Enforcement	8
Community Sentencing	14
Prison	16
Criminal Justice System	19
Restorative Justice	25
Victim Support & Witness Service	27
Discussion	30

Ministers Foreword



In 2013 the Home Department, in conjunction with key stakeholders in the criminal justice arena, launched the Crime & Justice Survey. The Survey saw a major departure from the Department's previously run Community Safety Survey, and provided the public with an opportunity to provide feedback on a number of criminal justice agencies, including Guernsey Police, the Guernsey Border Agency, Guernsey Probation Service, Guernsey Prison, the Judiciary and the Victim Support and Witness Service.

It is the Department's intention to repeat the Survey again in two years in order to effectively communicate with the public and facilitate meaningful trend analysis. The Department acknowledges that it is necessary for the Survey to continue to evolve, with the input of criminal justice agencies.

It is important to acknowledge that the Survey is a measure of experience and perceptions, which are notoriously difficult to quantify. It is therefore vital that it is not construed as a statistical report on the reality of crime at a local level.

The Home Department would be pleased to provide further information in relation to the Crime & Justice Survey, and all queries should be directed to Central Services.

A handwritten signature in black ink, appearing to be 'Peter Gillson', written in a cursive style.

Deputy Peter Gillson
Minister

Introduction

The Home Department, in conjunction with key stakeholders in the criminal justice arena as represented by the Criminal Justice Working Group (CJWG), is leading on the development of a fully co-ordinated Criminal Justice Strategy in order to bring together the programmes of each criminal justice agency and thereby achieve a more holistic criminal justice system.

Whilst the development of a Criminal Justice Strategy will drive the criminal justice systems enhancement, and also generate long-term financial savings, communication with the public is key to the improvement of services.

The Strategy is therefore supported by the Crime & Justice Survey, which will be run every two years. The results of the Survey will be used to inform the development and ongoing monitoring of the Criminal Justice Strategy.

Profile of Survey Respondents

It is important to obtain details about the respondent. This is not for the purposes of identification, but to ensure that the Survey has reached a representative proportion of the public. It is acknowledged that an inadequate span of respondents will lead to biased results and limit the usefulness of conclusions.

The **about you** section of the Survey elicits information in respect of the age and gender of respondents, their present parish of residence, their employment status and any connection they may have to the criminal justice system.

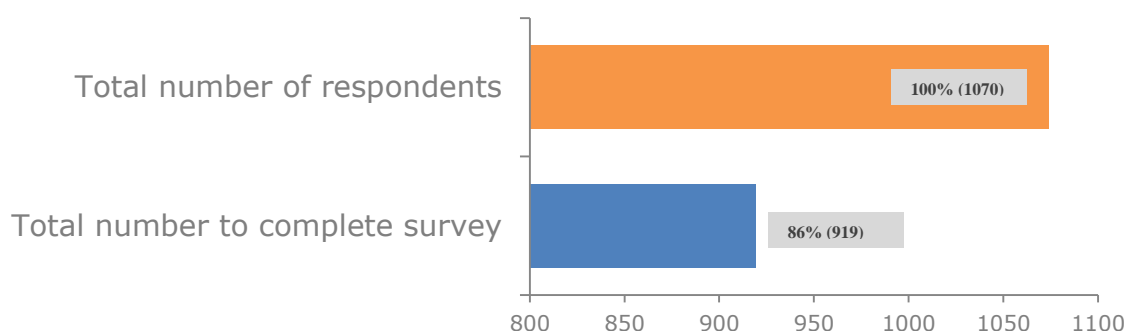


Figure 1.1. Age profile of respondents

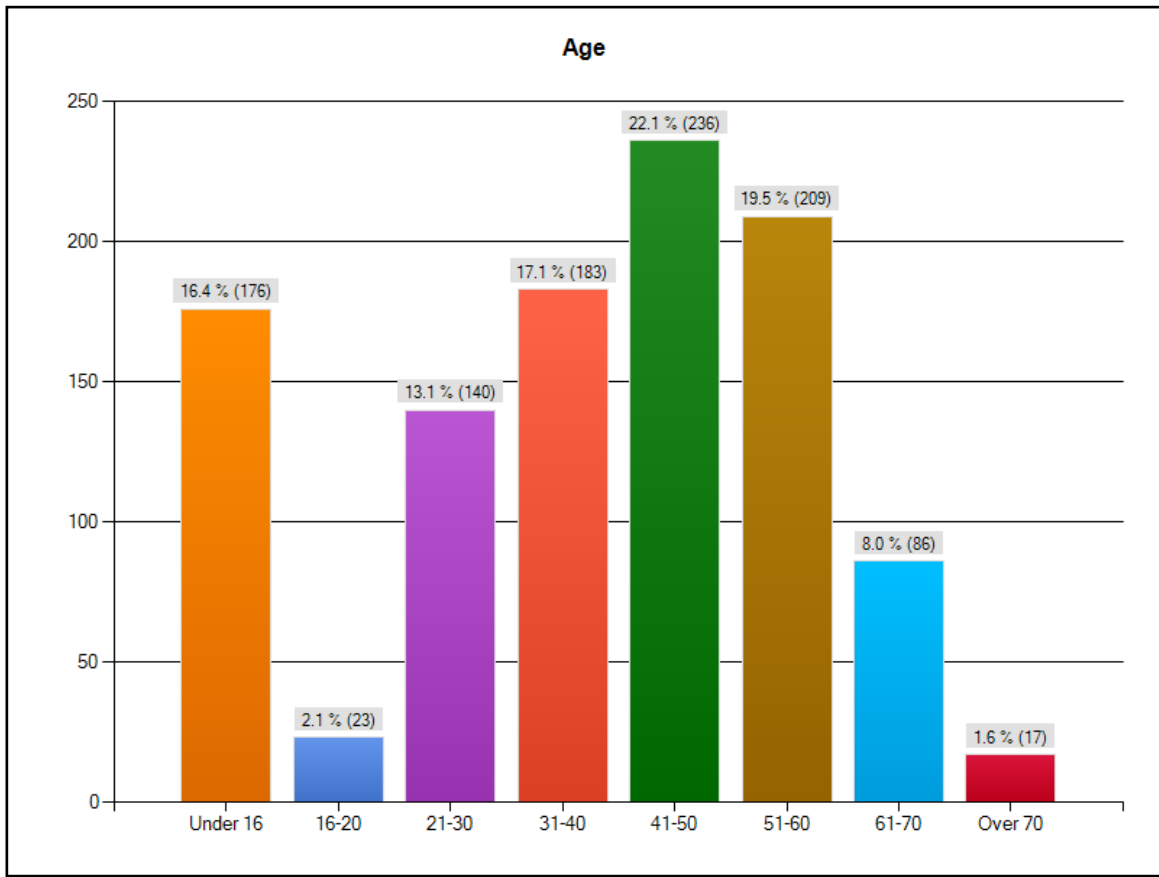


Figure 1.2. Gender profile of respondents

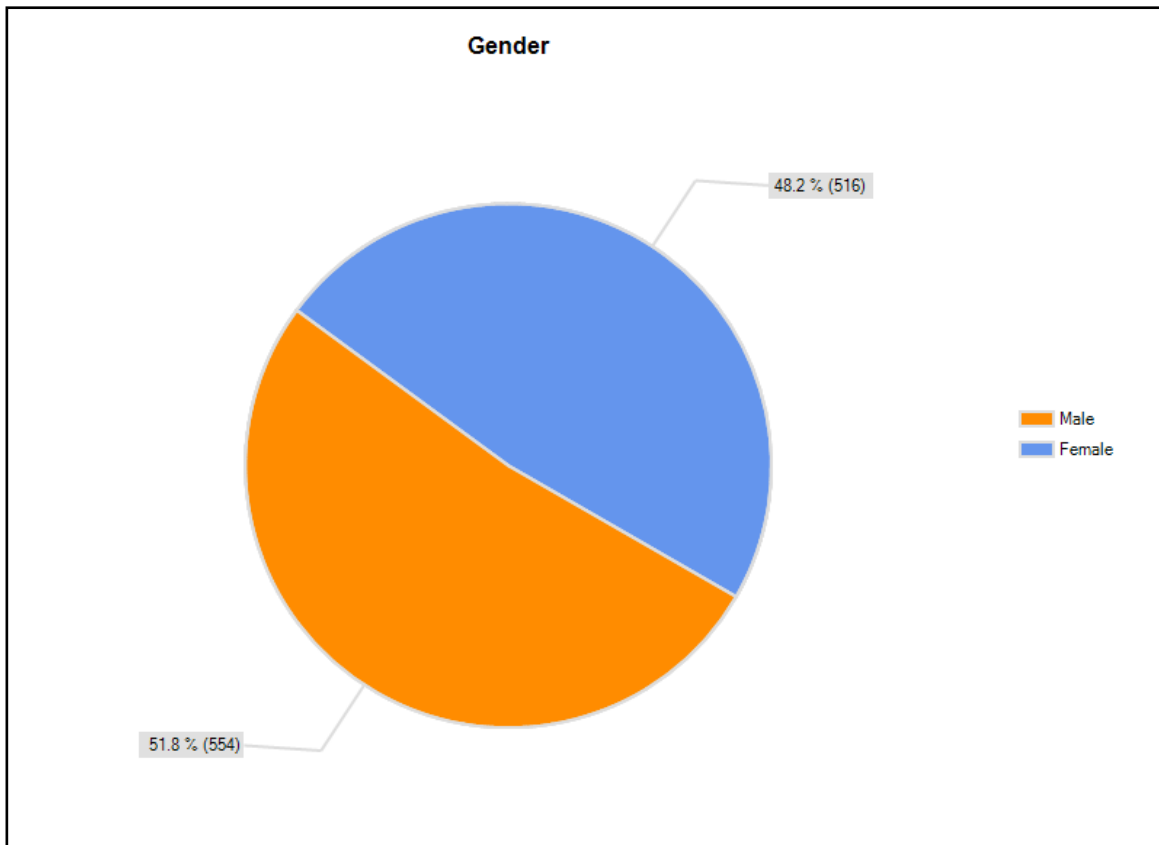


Figure 1.3. Geographical profile of respondents

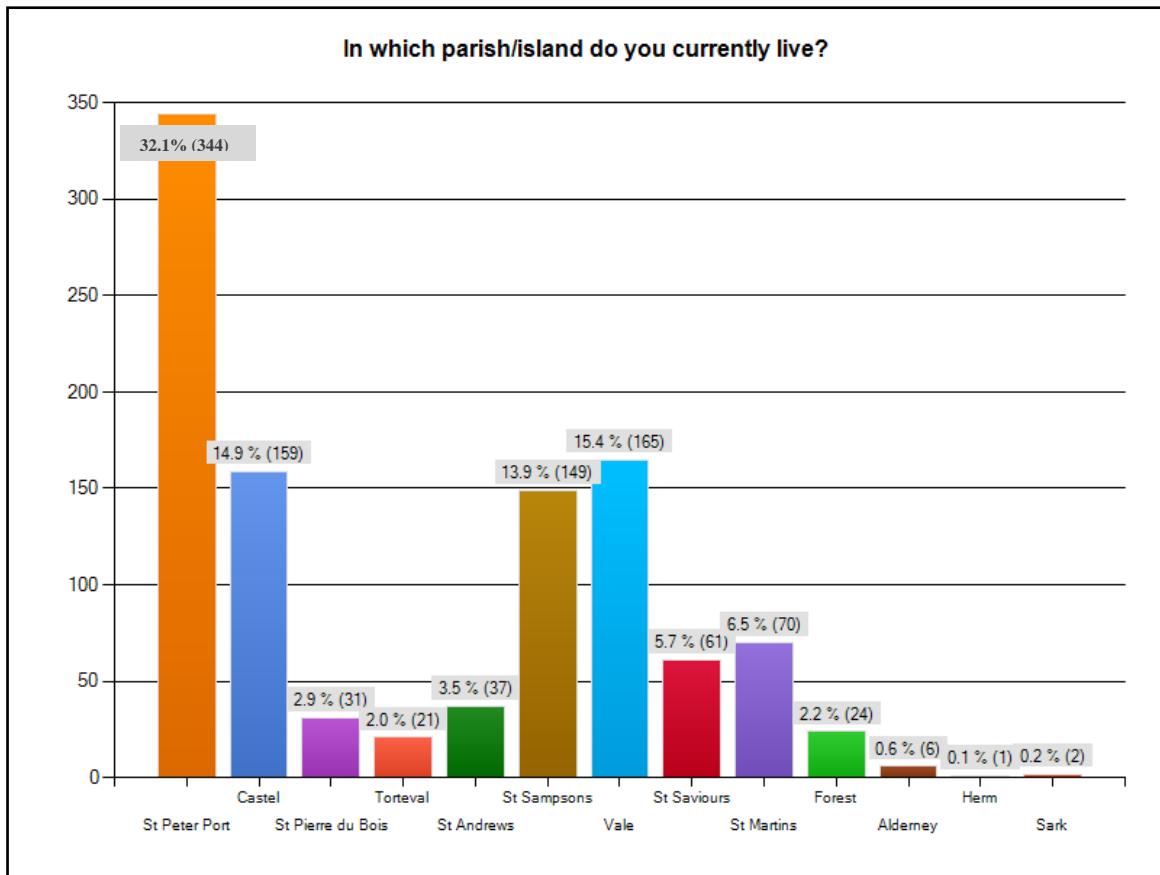


Figure 1.4. Employment profile of respondents

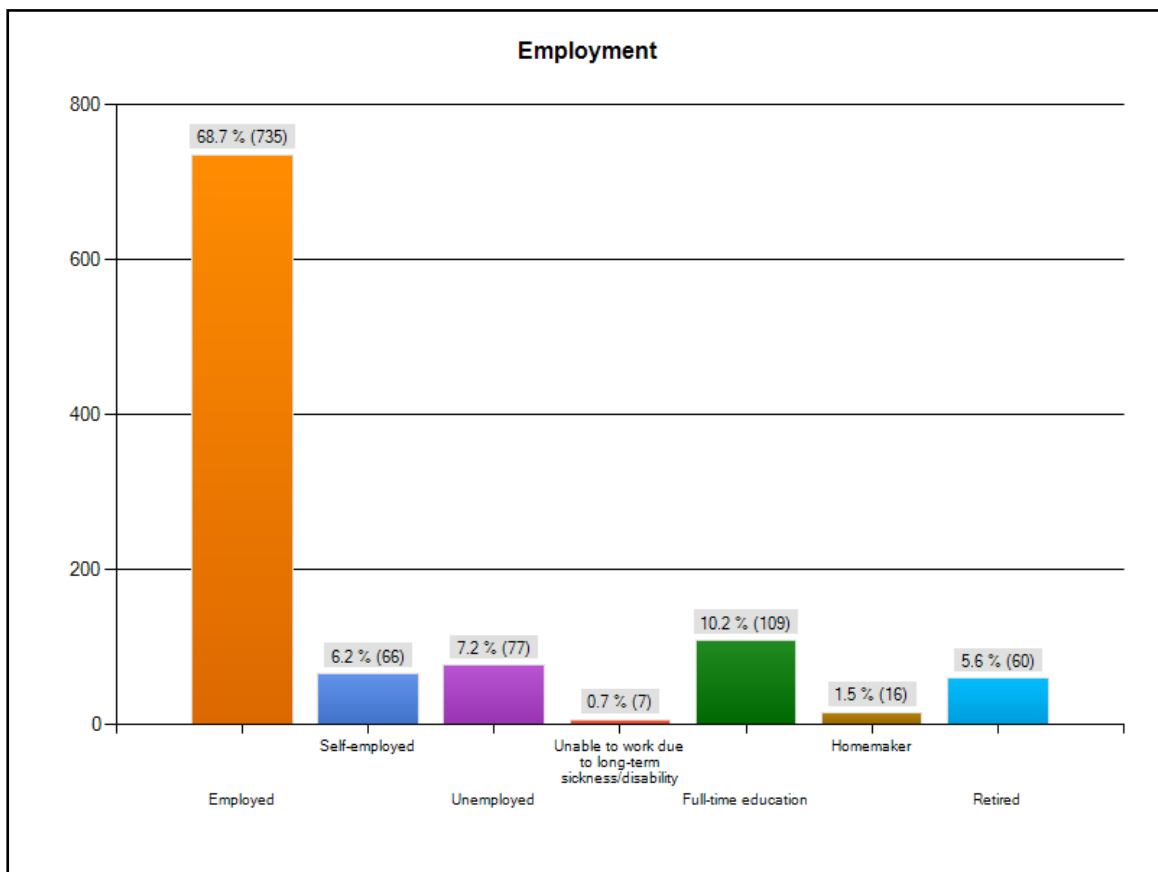
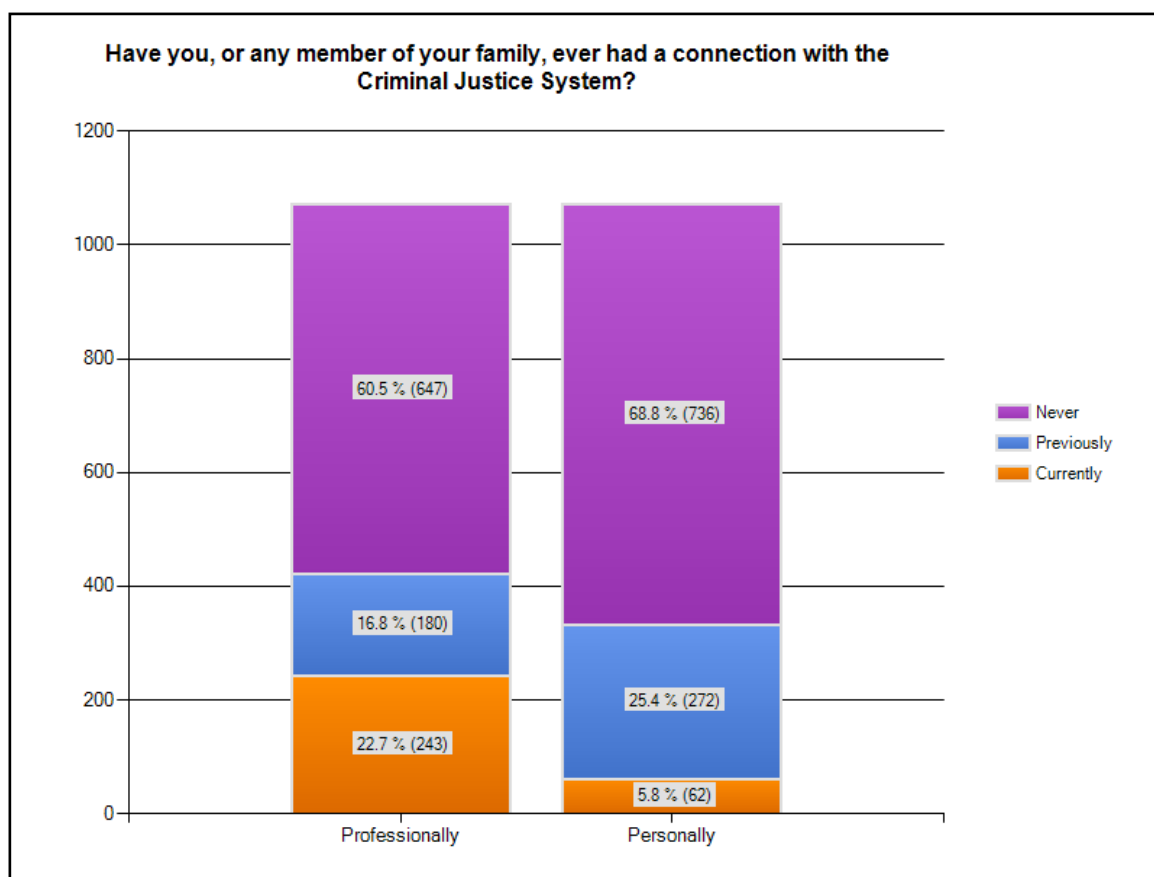


Figure 1.5. Connection profile of respondents



Crime and Law Enforcement

This section examines people's experiences of crime in the Bailiwick of Guernsey, specifically focussing on what people consider to be a major cause of crime and how the level of crime has changed within the last 12 months.

This section also asks about illegal drug use and how worried respondents are about becoming a victim of crime.

Figure 2.1

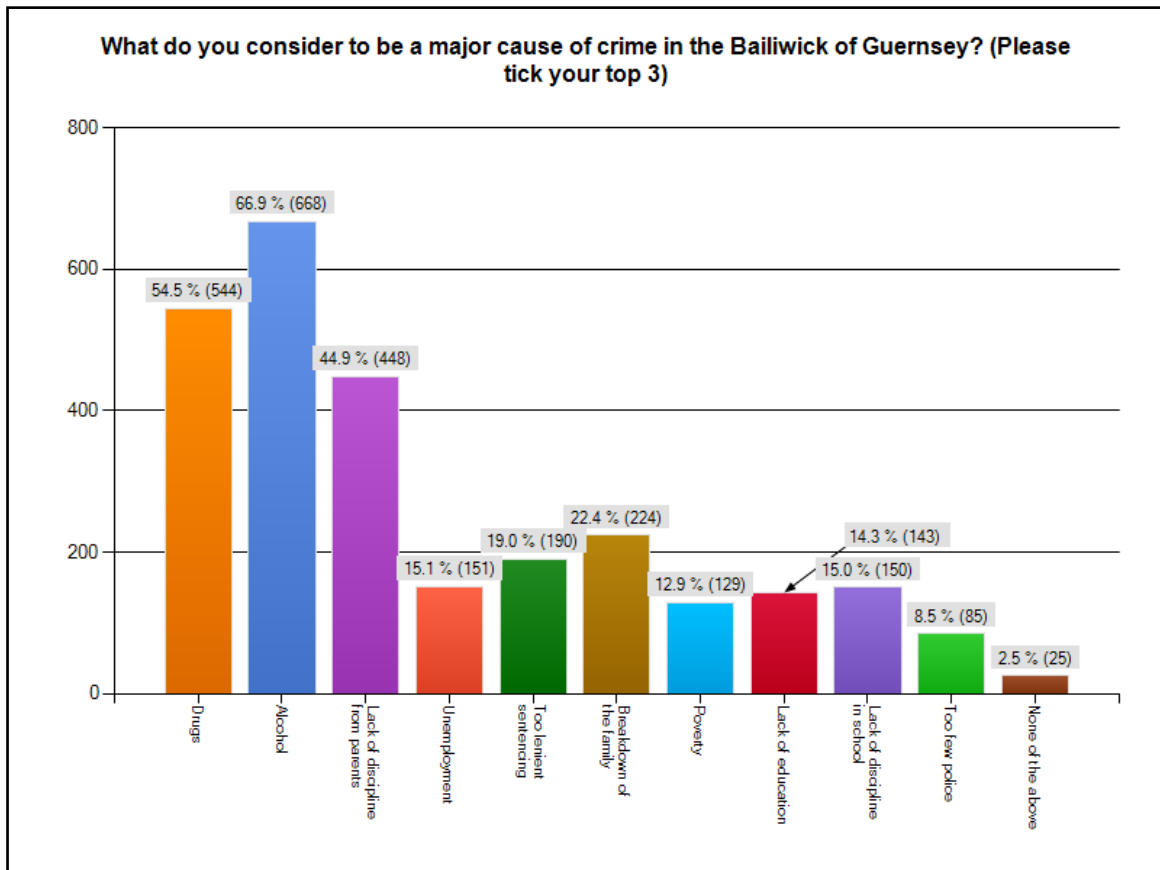


Figure 2.2

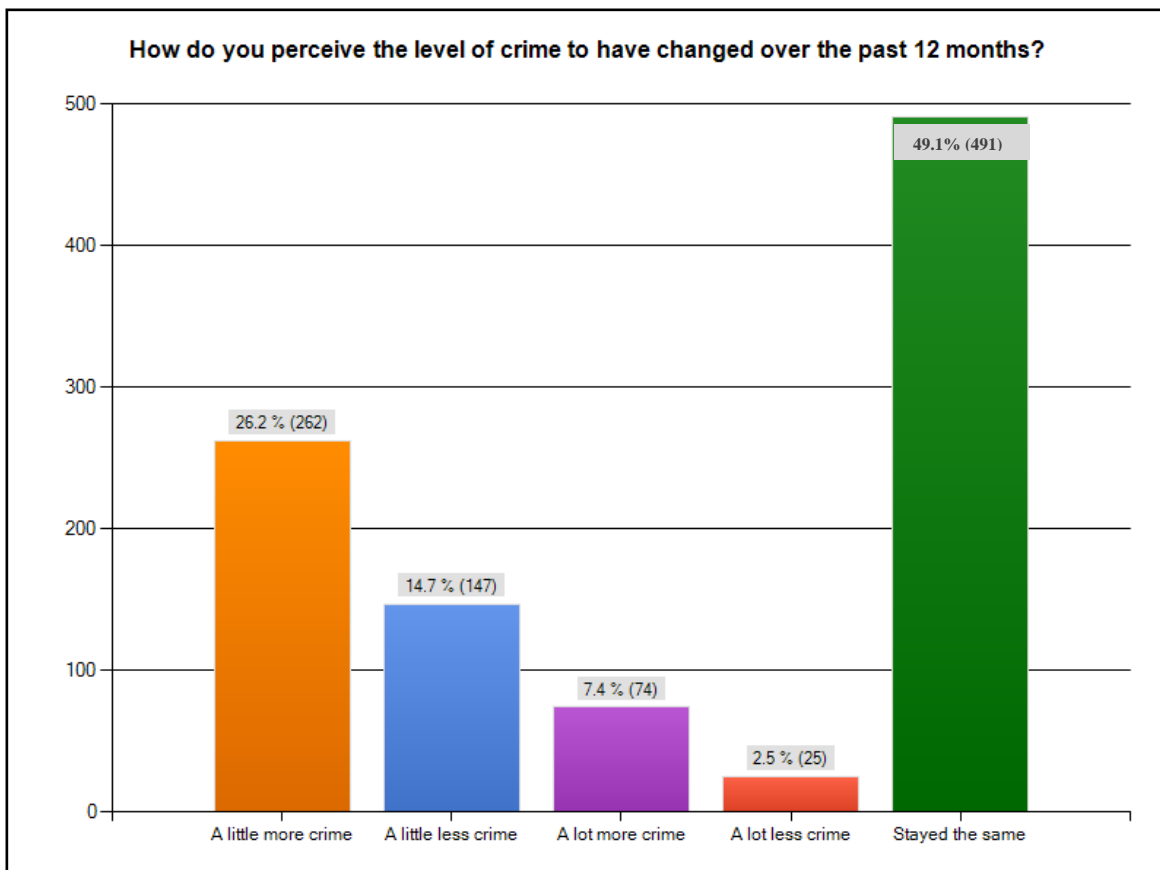


Figure 2.3

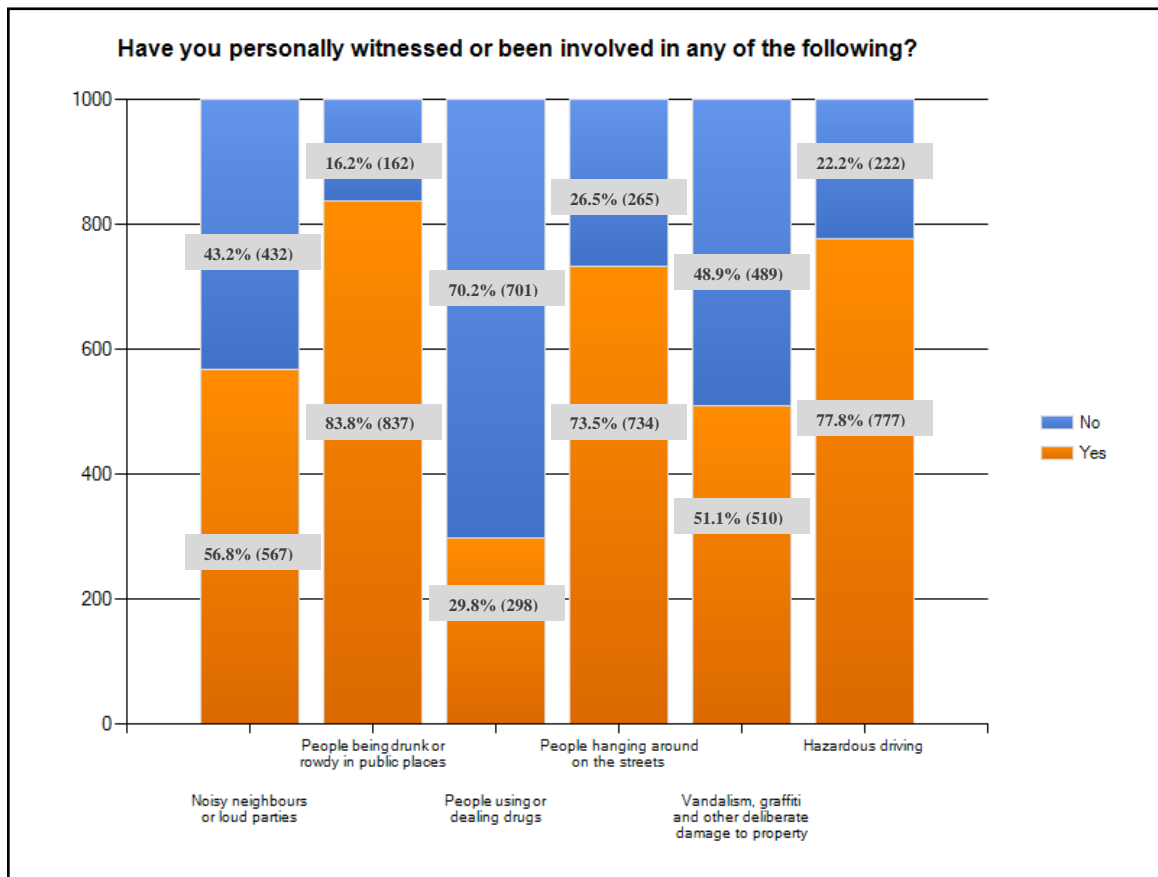


Figure 2.4

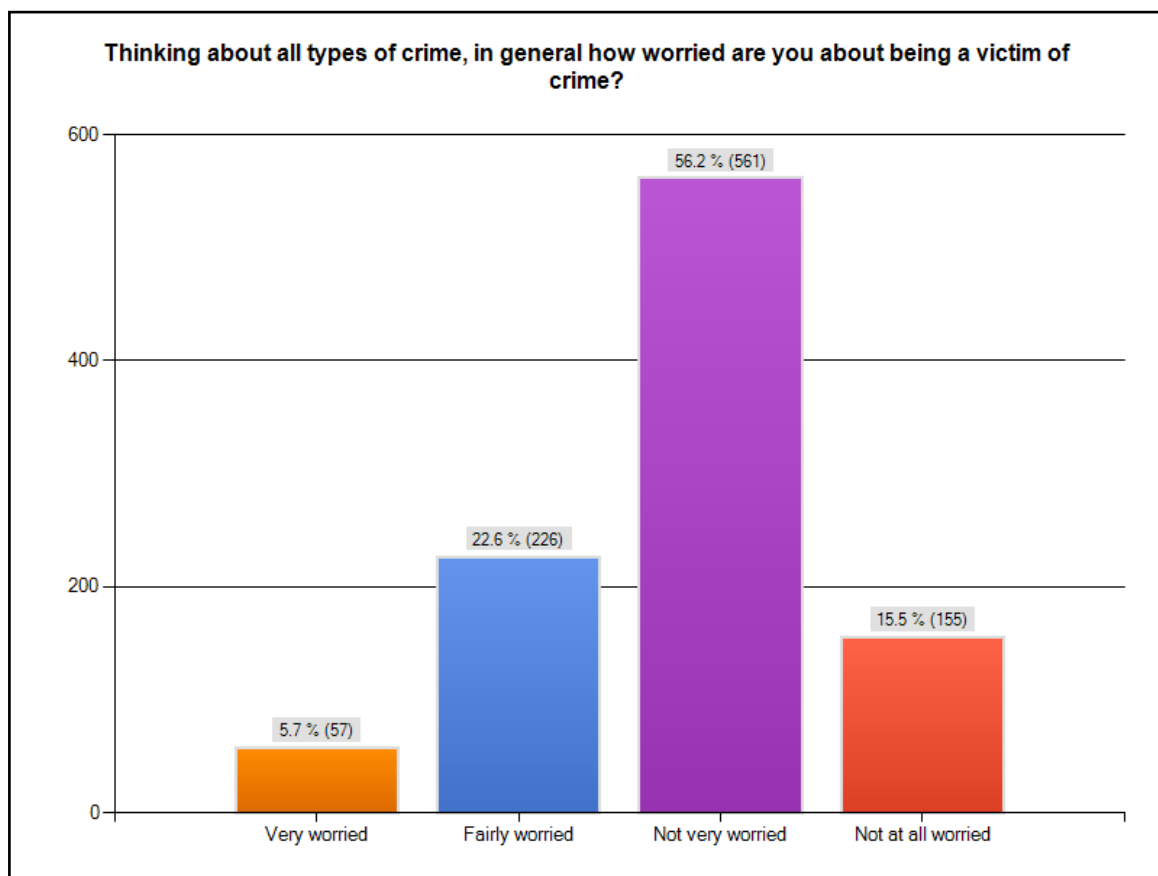
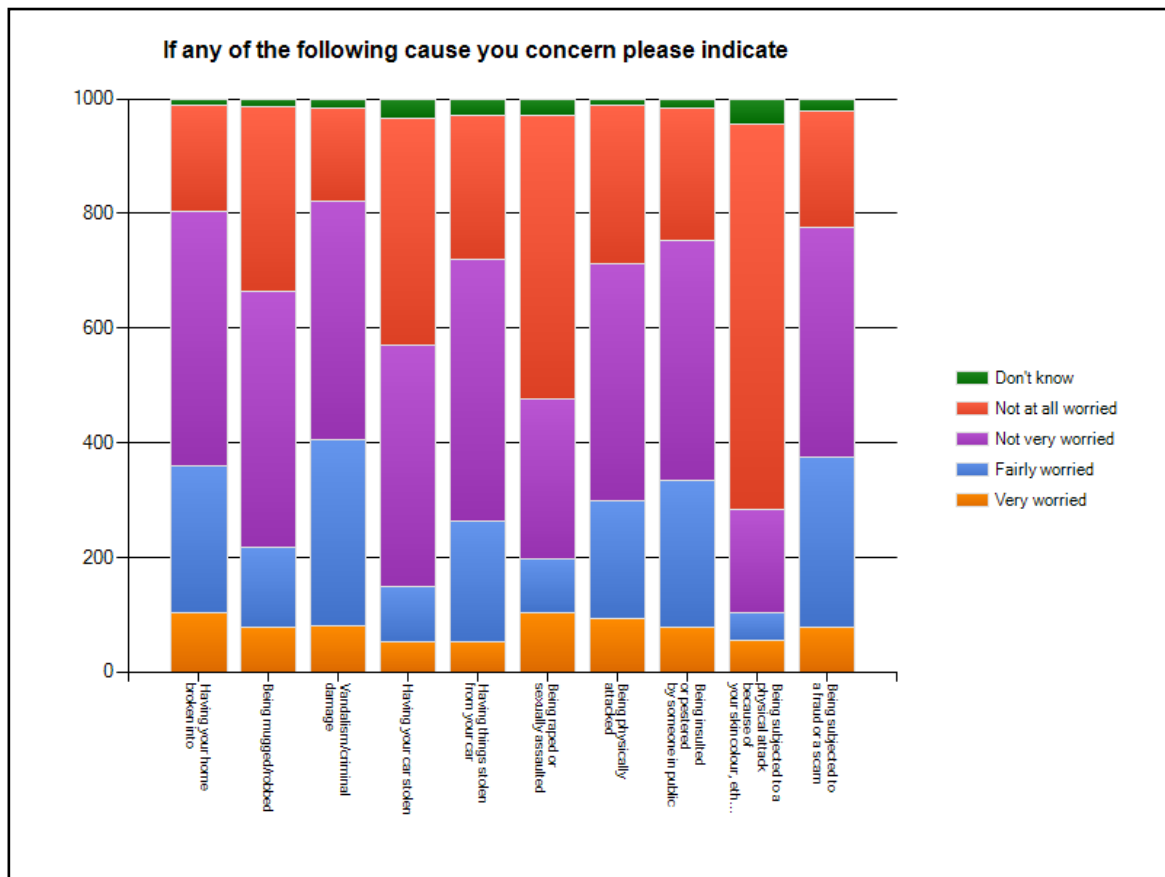
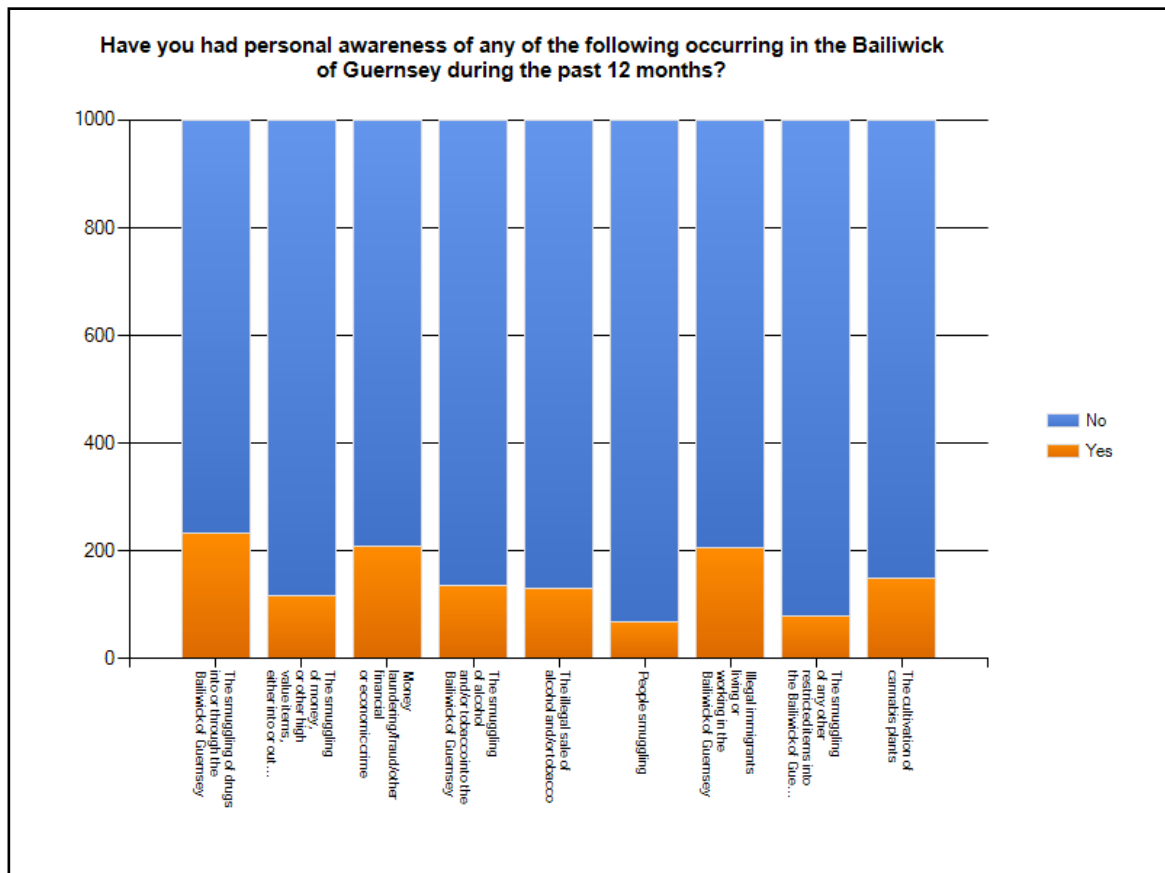


Figure 2.5



	Very worried	Fairly worried	Not very worried	Not at all worried	Don't know
Having your home broken into	10.4% (104)	25.5% (255)	44.5% (445)	18.5% (185)	1% (10)
Being mugged/robbed	7.9% (79)	13.8% (138)	44.6% (446)	32.3% (323)	1.3% (13)
Vandalism/criminal damage	8% (80)	32.5% (325)	41.7% (417)	16.1% (161)	1.6% (16)
Having your car stolen	5.2% (52)	9.6% (96)	42.3% (423)	39.6% (396)	3.2% (32)
Having things stolen from your car	5.2% (52)	21.1% (211)	45.7% (457)	25.2% (252)	2.7% (27)
Being raped or sexually assaulted	10.3% (103)	9.5% (95)	27.8% (278)	49.4% (494)	2.9% (29)
Being physically attacked	9.4% (94)	20.5% (205)	41.3% (413)	27.6% (276)	1.1% (11)
Being insulted or pestered by someone in public	7.7% (77)	25.7% (257)	42% (420)	22.9% (229)	1.6% (16)
Being subjected to a physical attack because of your skin colour, ethnic origin or religion	5.4% (54)	5% (50)	17.9% (179)	67.5% (674)	4.2% (42)
Being subjected to a fraud or a scam	7.9% (79)	29.7% (297)	40% (400)	20.3% (203)	2.0% (20)

Figure 2.6



	Yes	No
The smuggling of drugs into or through the Bailiwick of Guernsey	23.4% (234)	76.6% (765)
The smuggling of money, or other high value items, either into or out of the Bailiwick of Guernsey	11.8% (118)	88.2% (881)
Money laundering/fraud/other financial or economic crime	21.0% (210)	79% (789)
The smuggling of alcohol and/or tobacco into the Bailiwick of Guernsey	13.7% (137)	86.3% (862)
The illegal sale of alcohol and/or tobacco	13% (130)	87% (869)
People smuggling	7% (70)	93% (929)
Illegal immigrants living or working in the Bailiwick of Guernsey	20.6% (206)	79.4% (793)
The smuggling of any other restricted items into the Bailiwick of Guernsey	8% (80)	92% (919)
The cultivation of cannabis plants	14.9% (149)	85.1% (850)

Figure 2.7

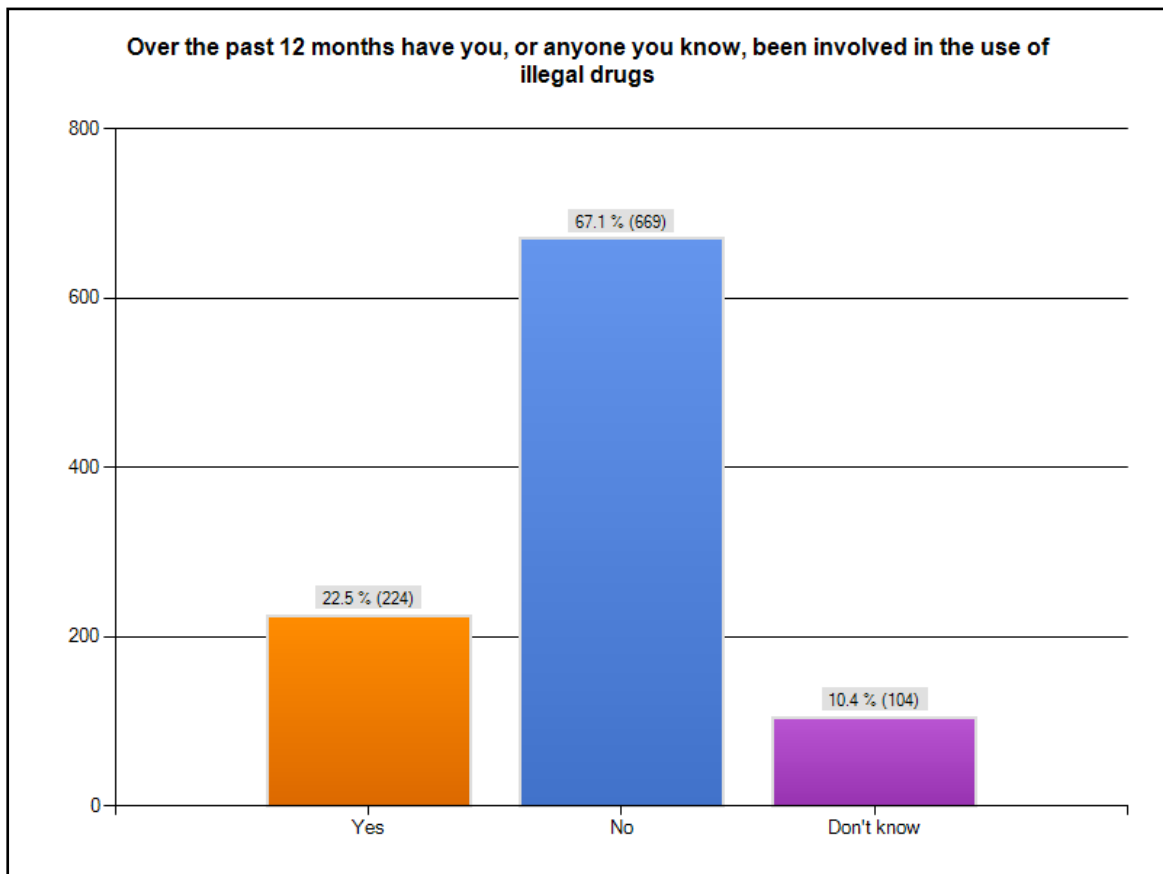
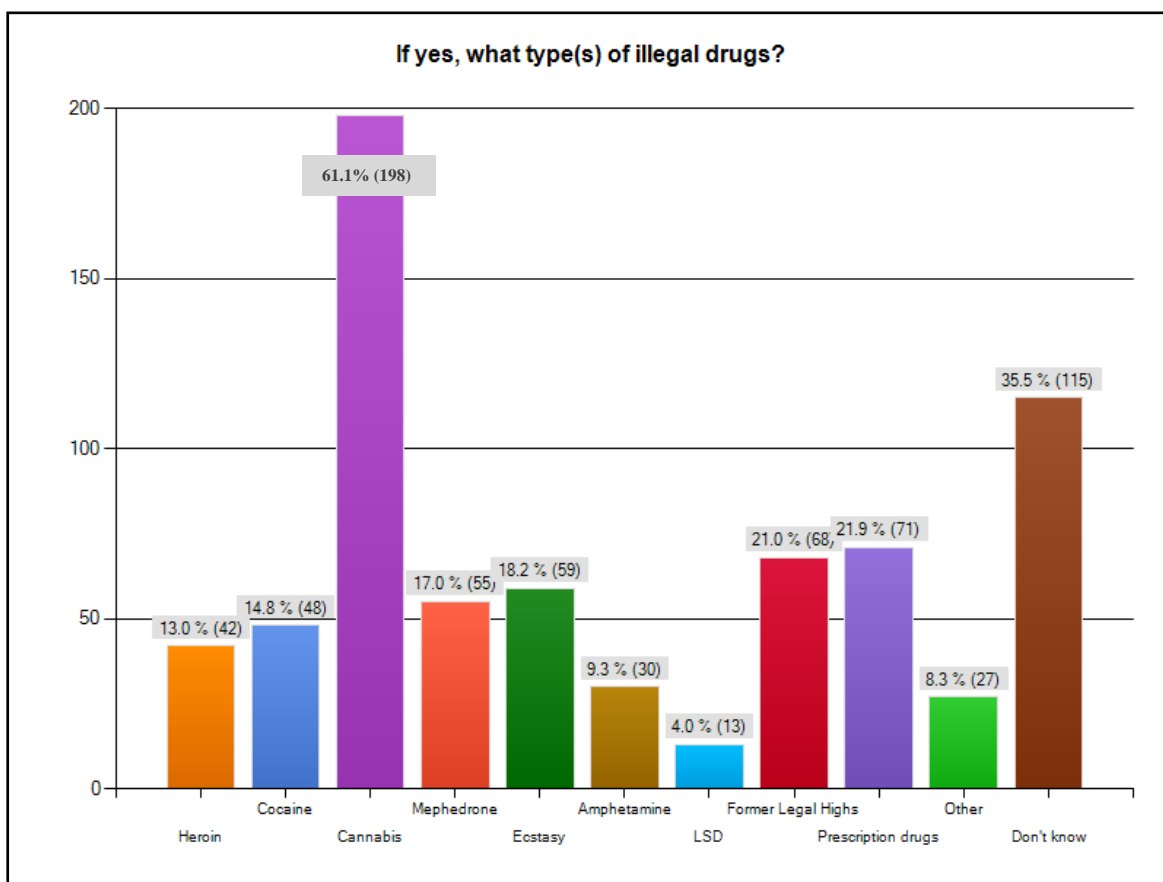


Figure 2.8



Community Sentencing

These questions focus on what happens after someone is found guilty of committing a crime, and asks respondents if they have prior knowledge of the different community sentences available.

This section also asks respondents to provide their opinion on the community sentences available.

Figure 3.1

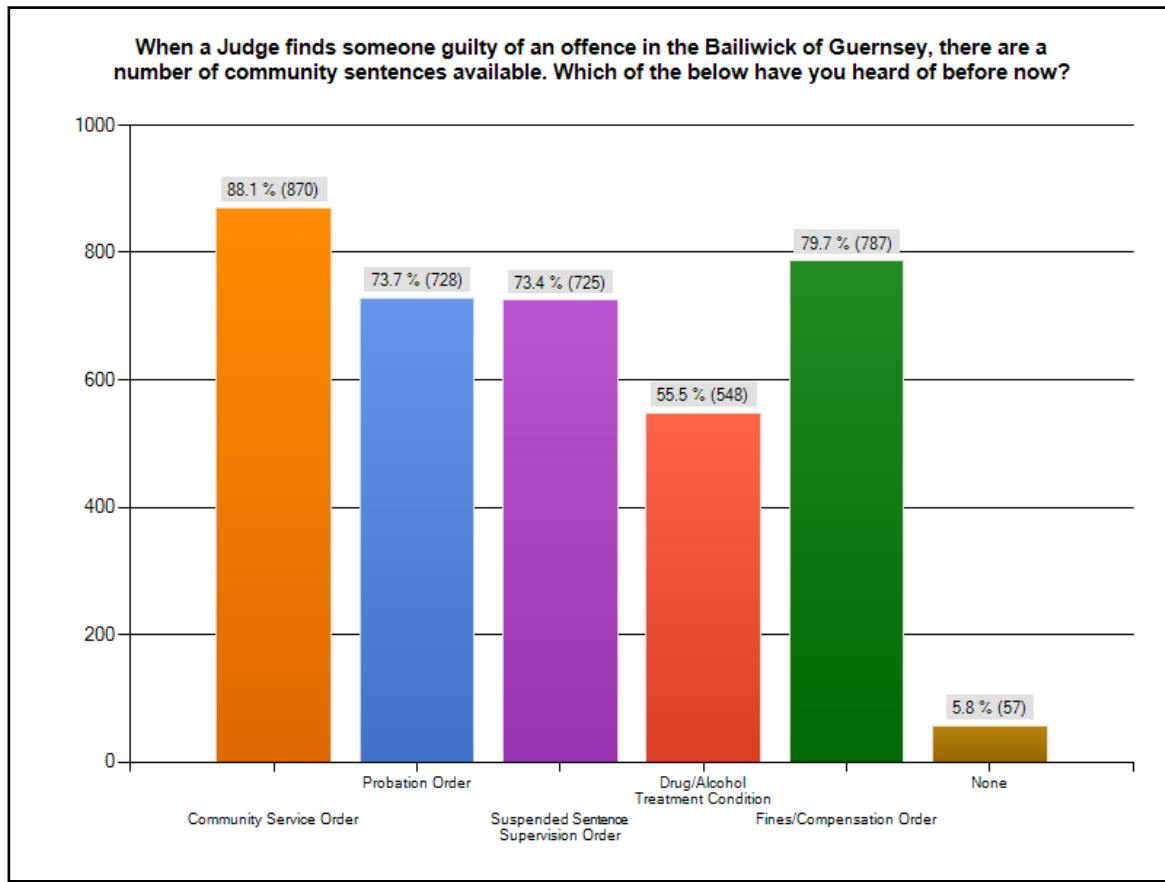
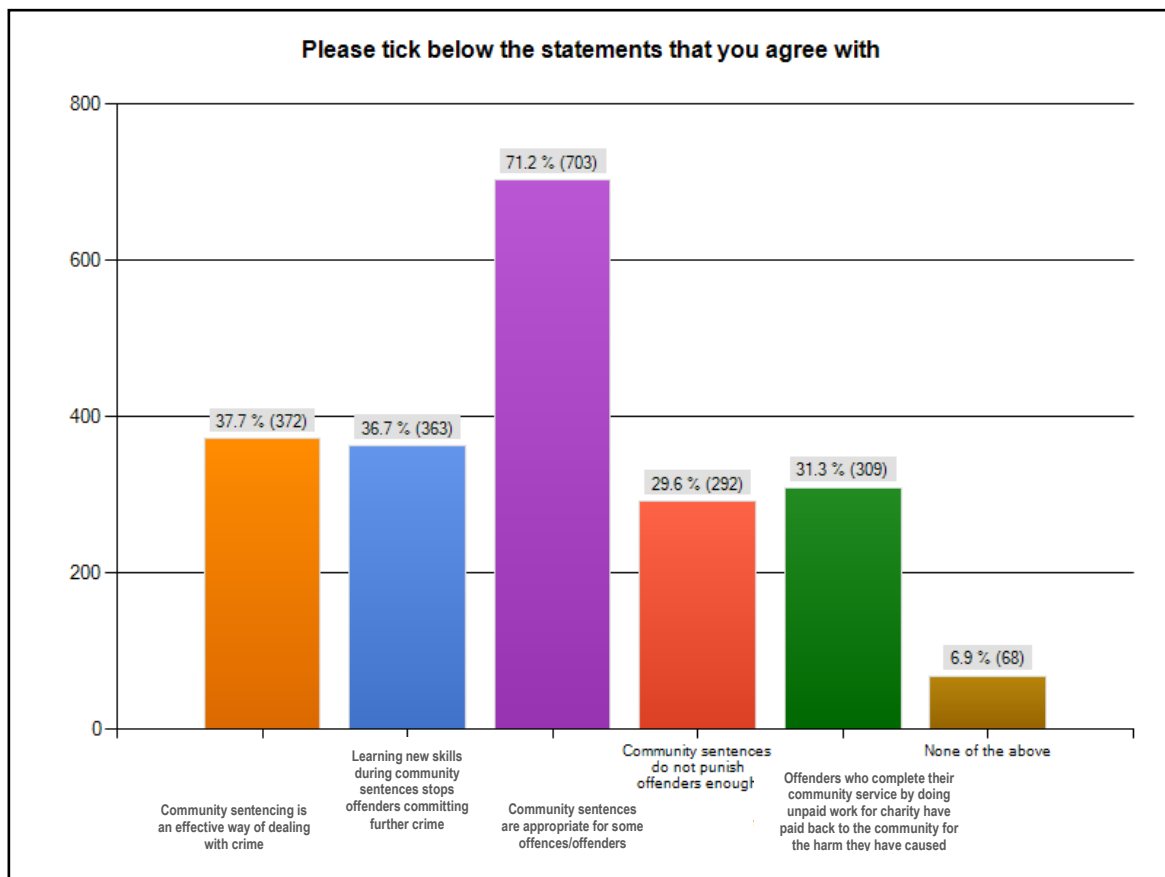


Figure 3.2



Prison

This section asks for respondents to consider what they feel the purpose of prison is, whilst also considering what factors should be taken into account when sentencing someone, and what provisions should be available for prisoners.

Figure 4.1

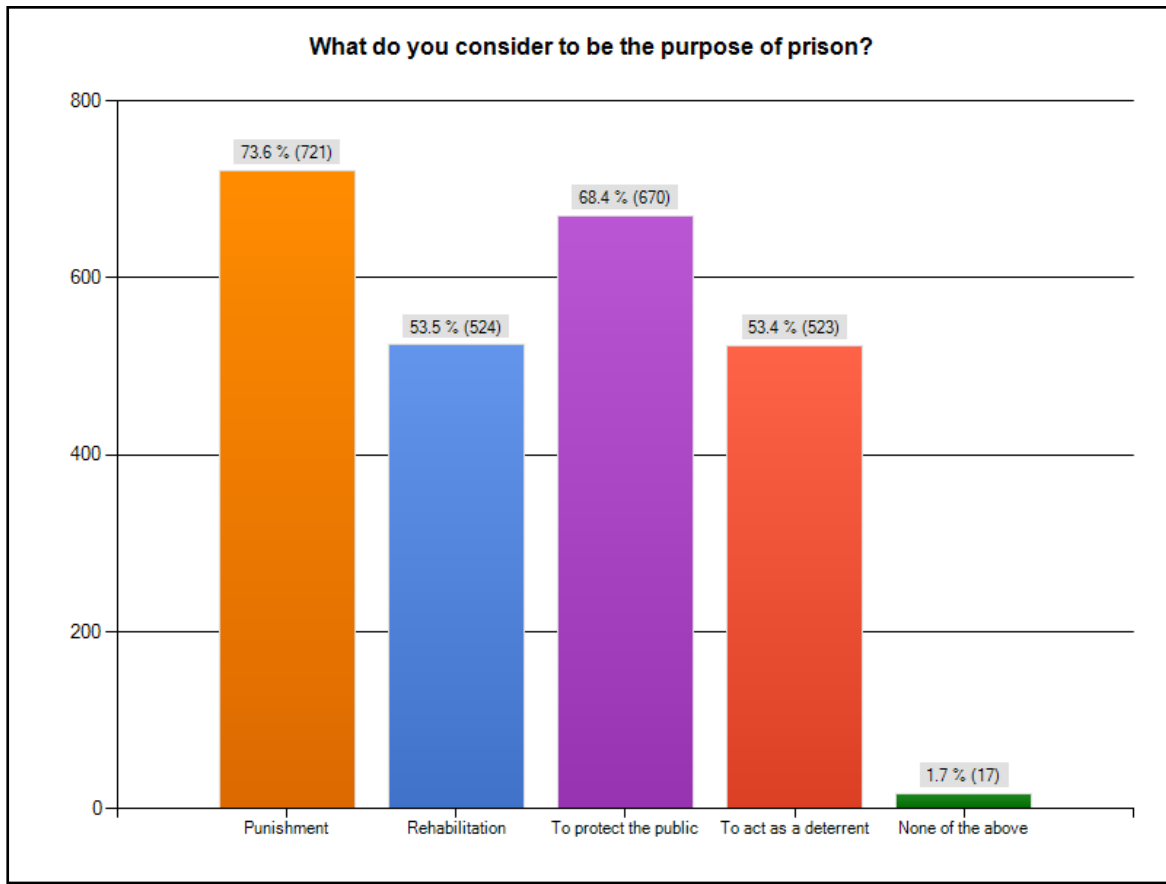


Figure 4.2

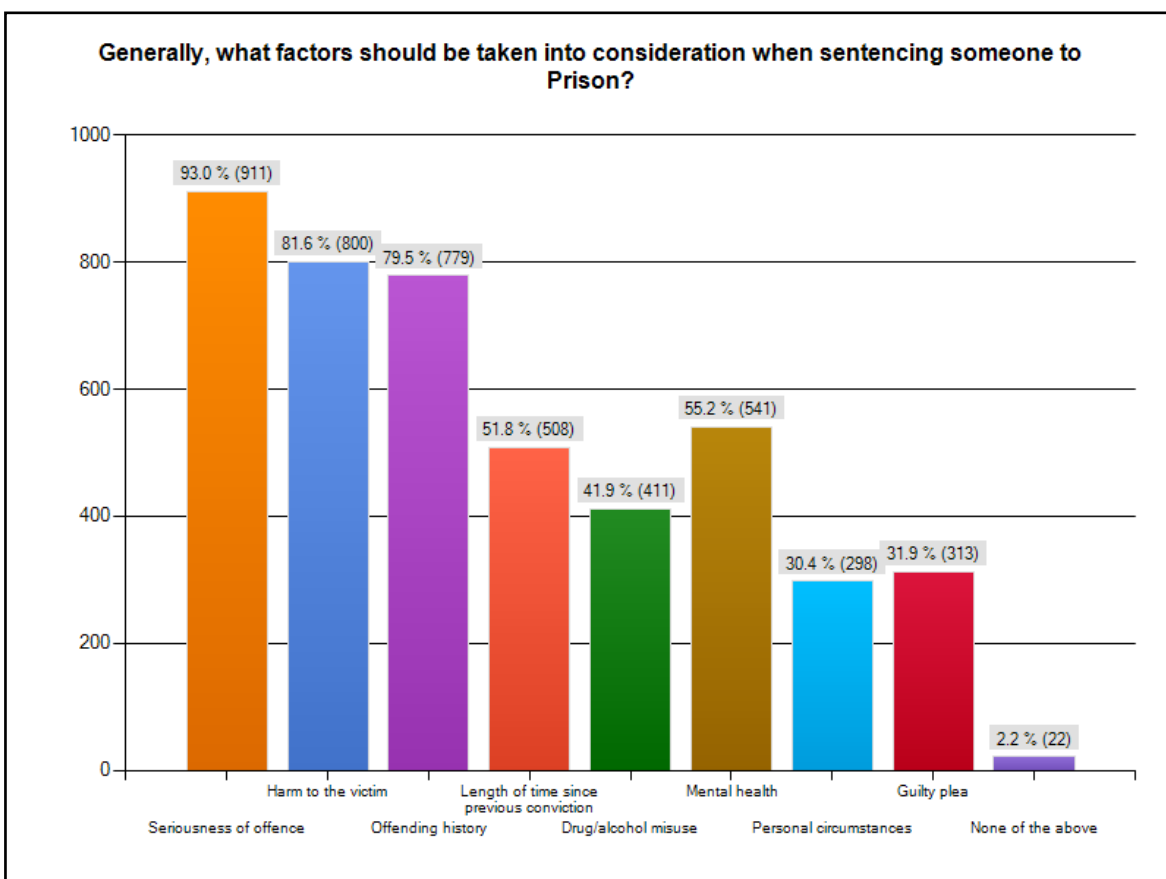
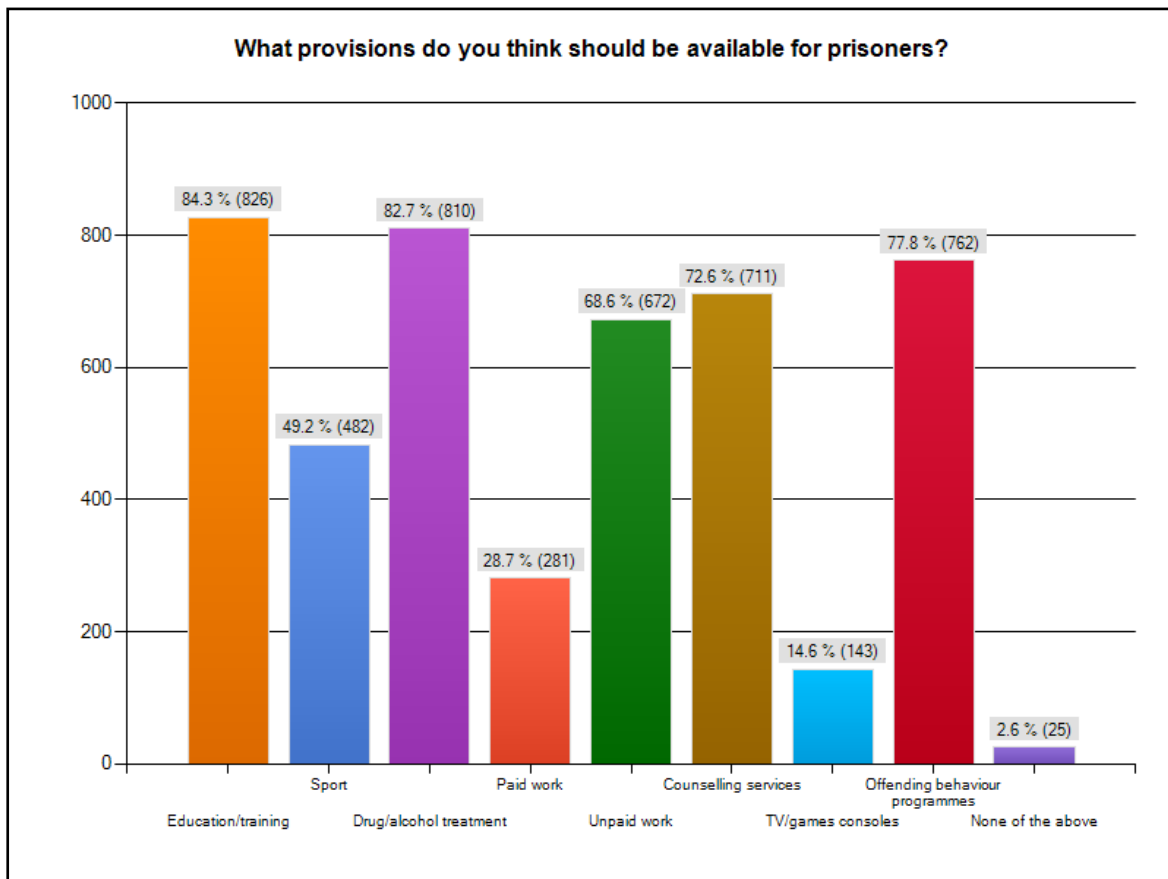


Figure 4.3



Criminal Justice System

The criminal justice system is the shared name for all of the organisations that deal with finding and arresting offenders, taking them through the court system, deciding what sentence they are given if found guilty and carrying out that sentence.

This section asks how much is known about the criminal justice system and how confident respondents are about its effectiveness.

Children and young people (aged 12-17) who are reported by the Police in relation to criminal allegations can also be dealt with by the Children's Convenor and may appear before the Child Youth and Community Tribunal.

Figure 5.1

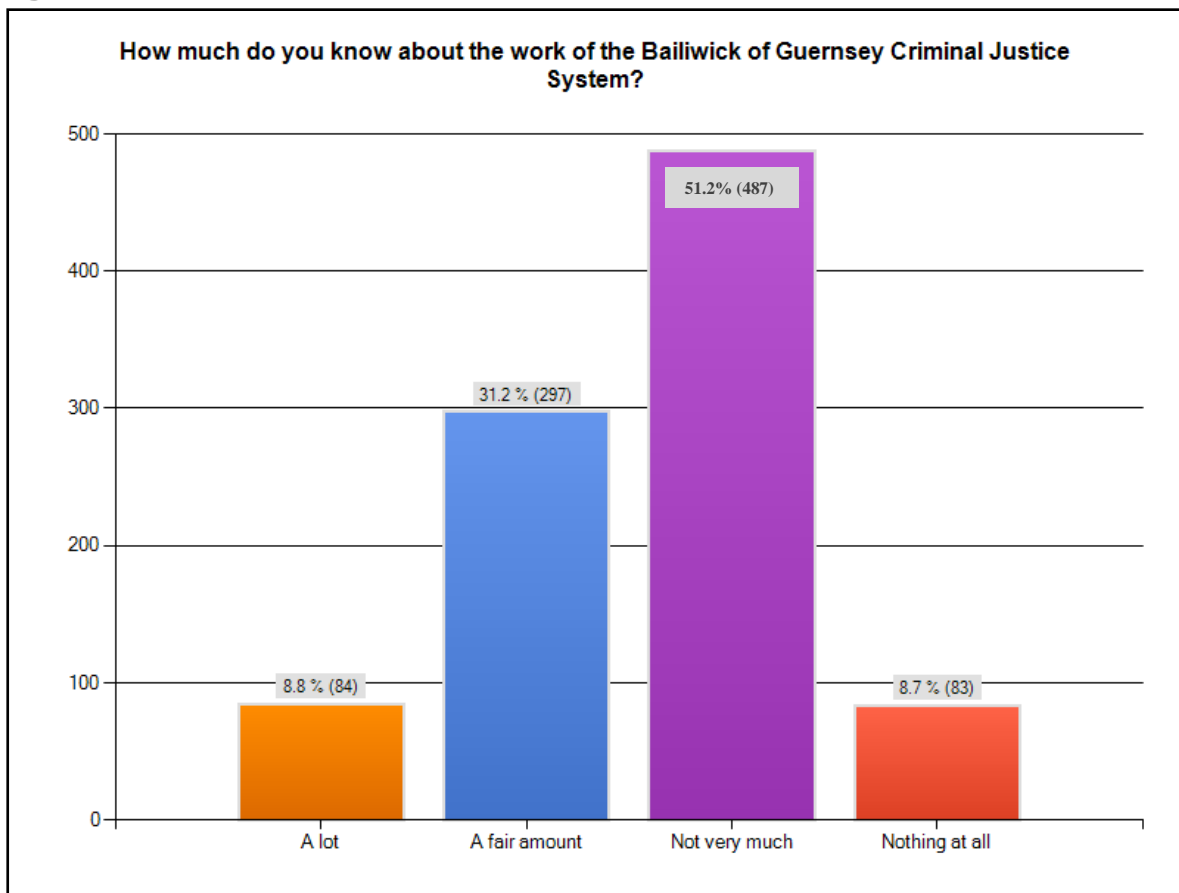
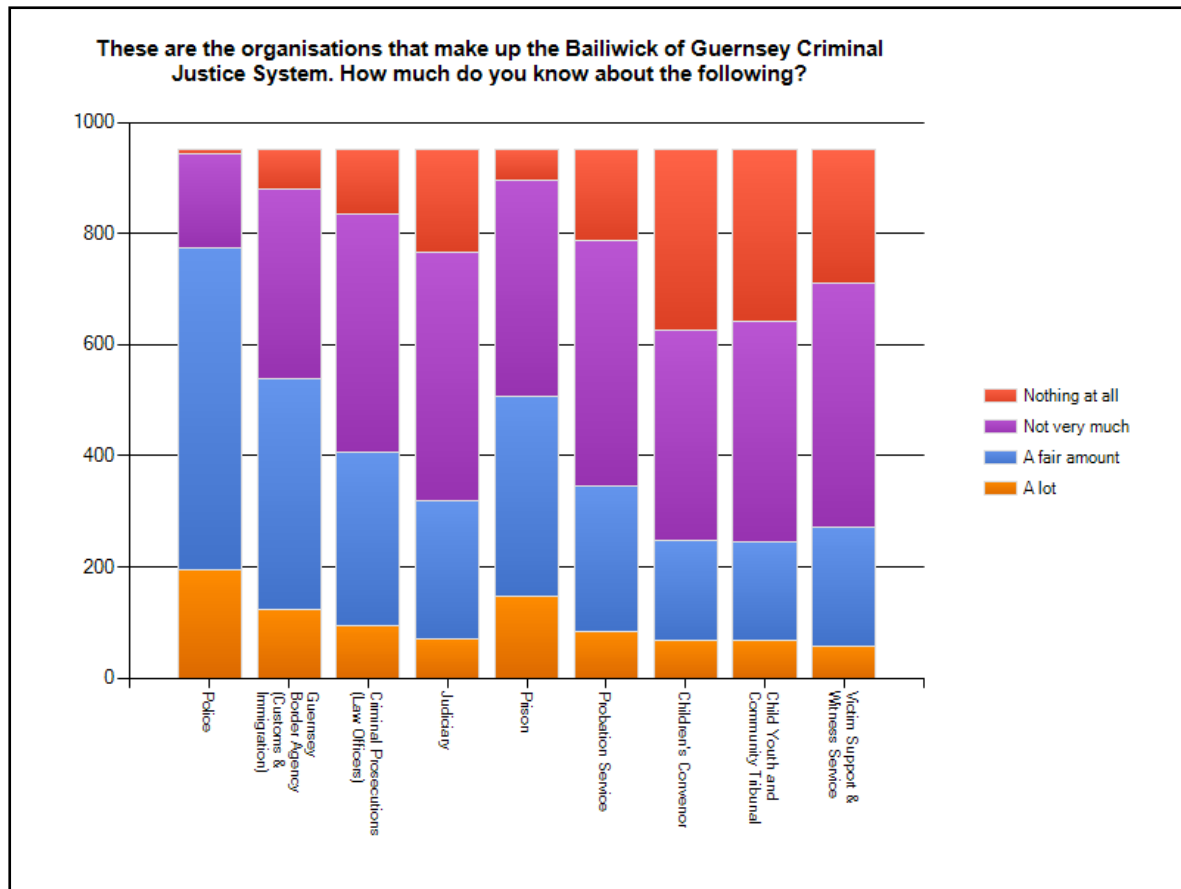
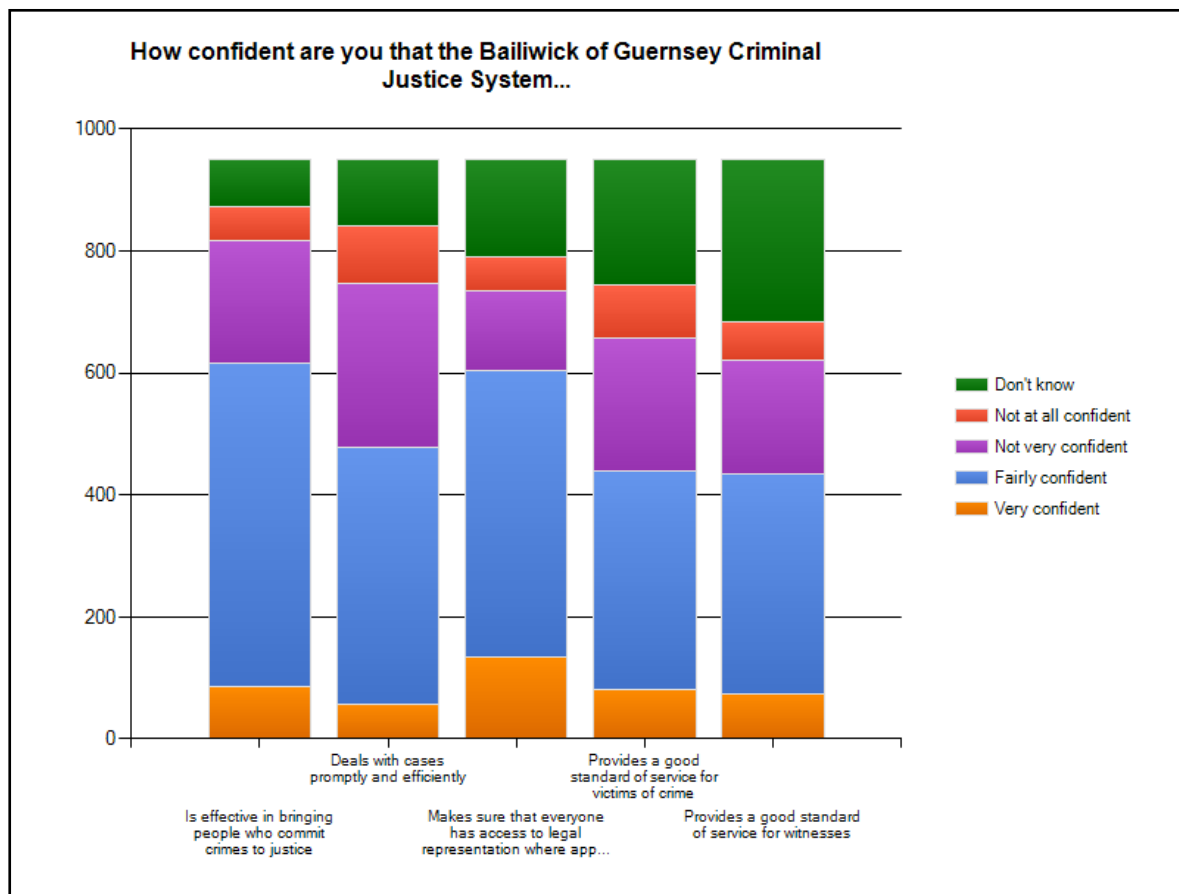


Figure 5.2



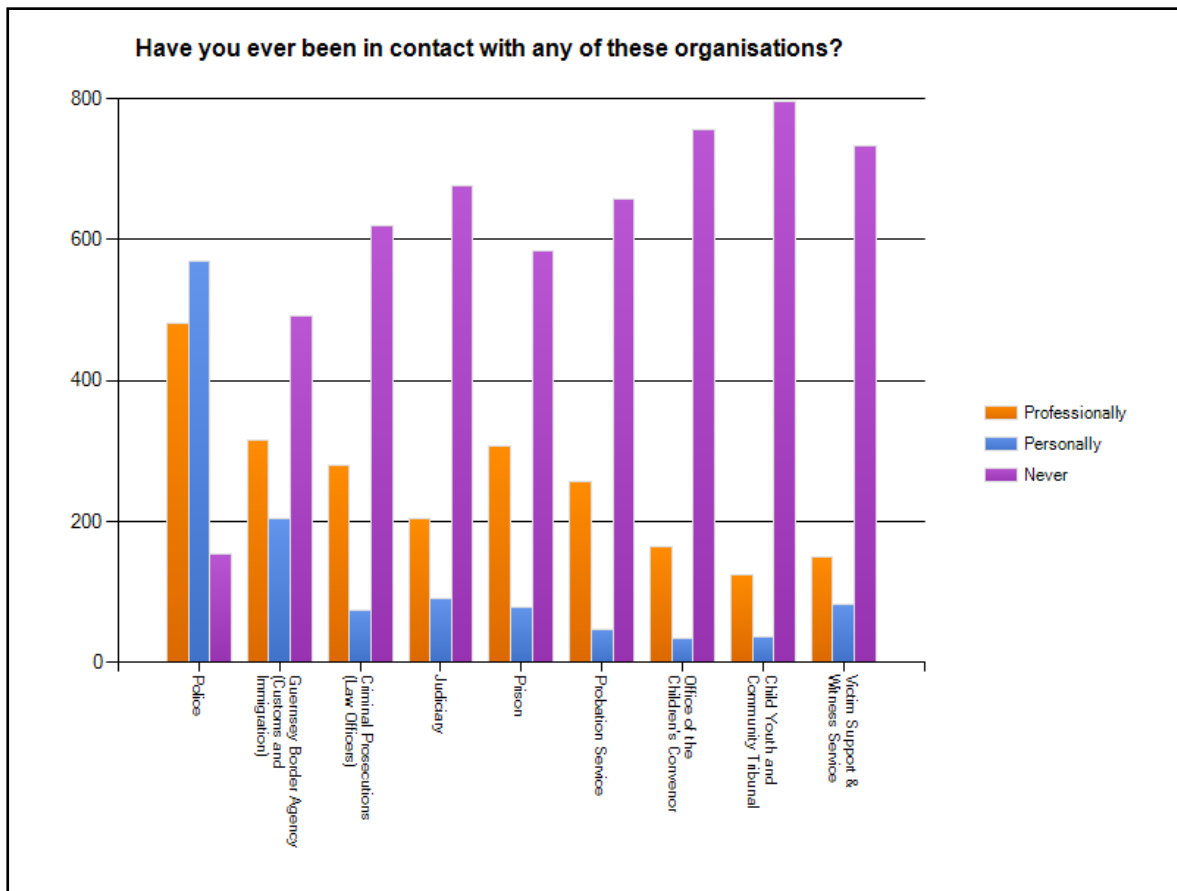
	A lot	A fair amount	Not very much	Nothing at all
Police	20.6% (196)	60.9% (579)	17.7% (168)	0.8% (8)
Guernsey Border Agency (Customs & Immigration)	13% (124)	43.6% (415)	35.9% (341)	7.5% (71)
Criminal Prosecutions (Law Officers)	10% (95)	32.7% (311)	45% (428)	12.3% (117)
Judiciary	7.6% (72)	26.1% (248)	47% (447)	19.3% (184)
Prison	15.5% (147)	37.7% (359)	40.9% (389)	5.9% (56)
Probation Service	8.9% (85)	27.3% (260)	46.5% (442)	17.2% (164)
Children's Convenor	7% (67)	18.9% (180)	39.7% (378)	34.3% (326)
Child Youth and Community Tribunal	7.2% (68)	18.5% (176)	41.9% (398)	32.5% (309)
Victim Support & Witness Service	6% (57)	22.6% (215)	46.1% (438)	25.3% (241)

Figure 5.3



	Very confident	Fairly confident	Not very confident	Not at all confident	Don't know
Is effective in bringing people who commit crime to justice	9.1% (87)	55.6% (529)	21.0% (200)	6.0% (57)	8.2% (78)
Deals with cases promptly and efficiently	6% (57)	44.2% (420)	28.4% (270)	9.8% (93)	11.7% (111)
Makes sure that everyone has access to legal representation where appropriate	14.2% (135)	49.3% (469)	13.8% (131)	5.8% (55)	16.9% (161)
Provides a good standard of service for victims of crime	8.5% (81)	37.7% (359)	22.7% (216)	9.3% (88)	21.8% (207)
Provides a good standard of service for witnesses	7.9% (75)	37.9% (360)	19.7% (187)	6.4% (61)	28.2% (268)

Figure 5.4



	Professionally	Personally	Never
Police	50.5% (480)	59.8% (569)	16.2% (154)
Guernsey Border Agency (Customs and Immigration)	33.1% (315)	21.3% (203)	51.6% (491)
Criminal Prosecutions (Law Officers)	29.4% (280)	7.8% (74)	65.2% (620)
Judiciary	21.5% (204)	9.5% (90)	71.1% (676)
Prison	32.2% (306)	8.2% (78)	61.3% (583)
Probation Service	27% (257)	4.9% (47)	69.1% (657)
Office of the Children's Convenor	17.4% (165)	3.6% (34)	79.5% (756)
Child Youth and Community Tribunal	13.1% (125)	3.7% (35)	83.6% (795)
Victim Support & Witness Service	15.8% (150)	8.6% (82)	77.1% (733)

Figure 5.5

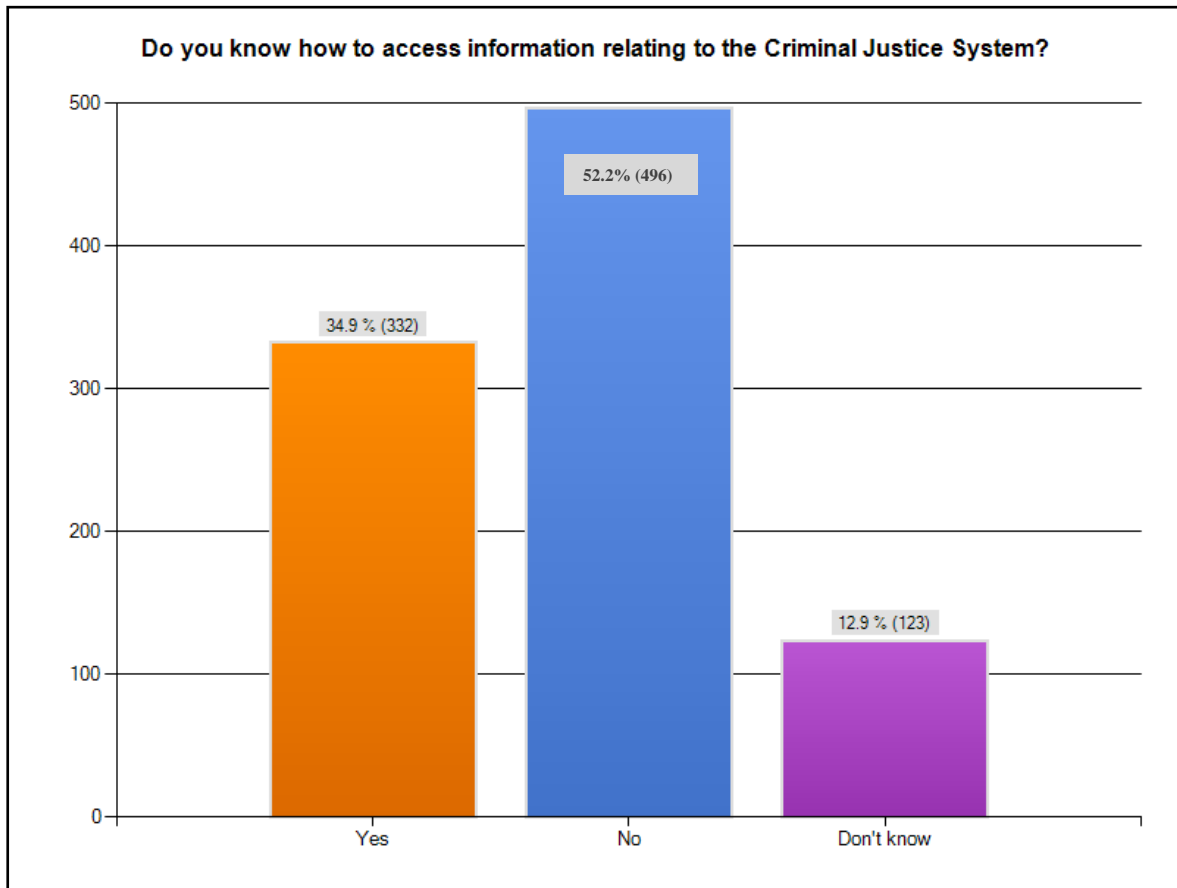
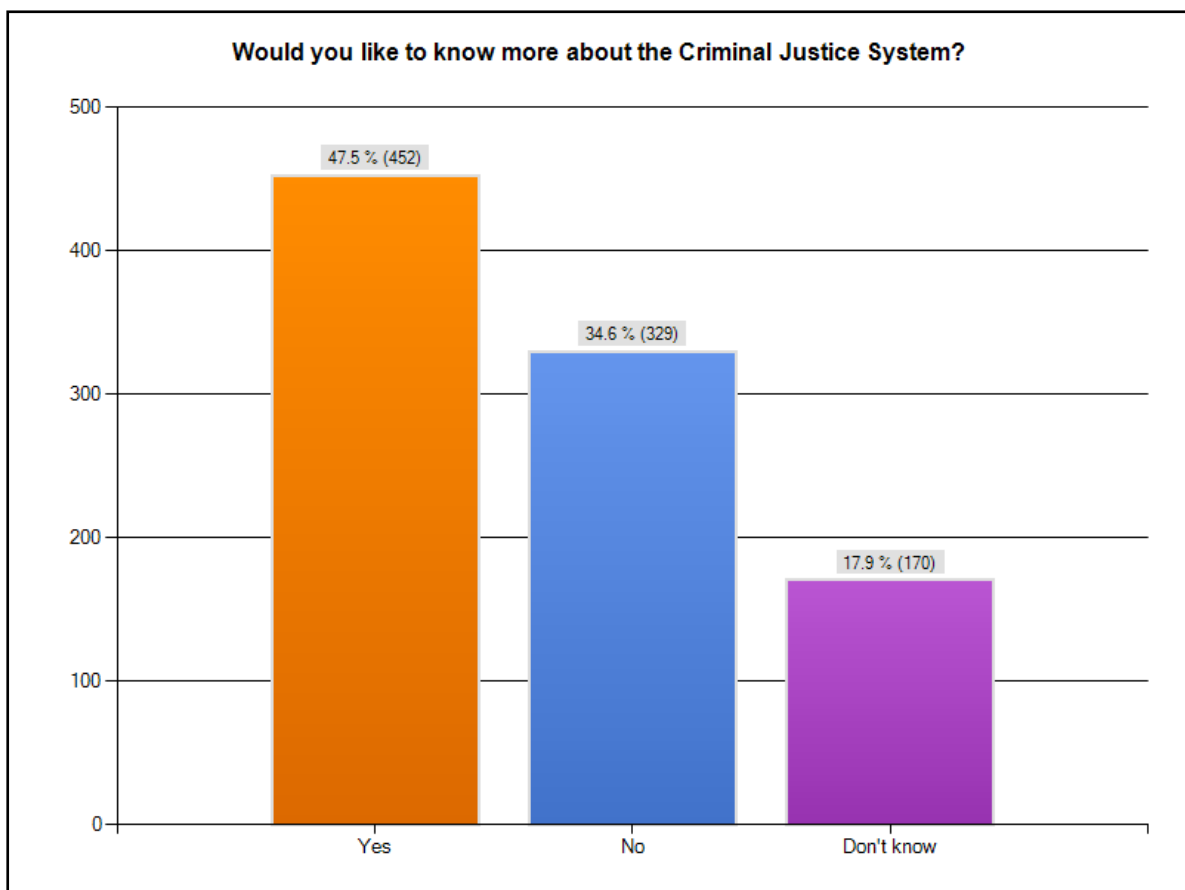


Figure 5.6



Restorative Justice

Restorative Justice focusses on making amends for the harm done. It is a collection of diverse practices encompassing civil renewal, individual responsibility, conflict resolution, empowerment, shaming and forgiveness.

It is important to recognise that Restorative Justice does not replace the criminal justice system, rather it can be used alongside to complement it.

The questions in this section focus on the victim-centred process of Restorative Justice, asking whether people would use the service if they were to be a victim of crime.

Figure 6.1

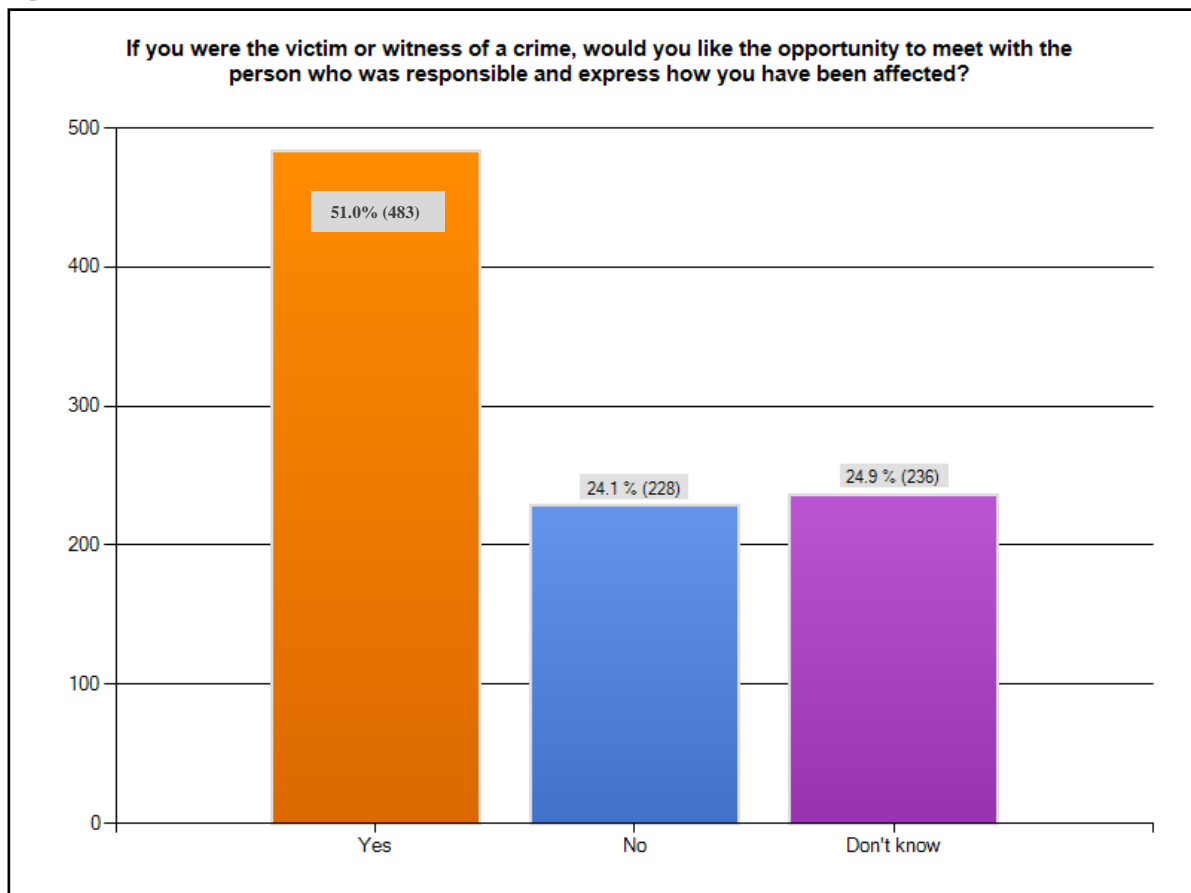
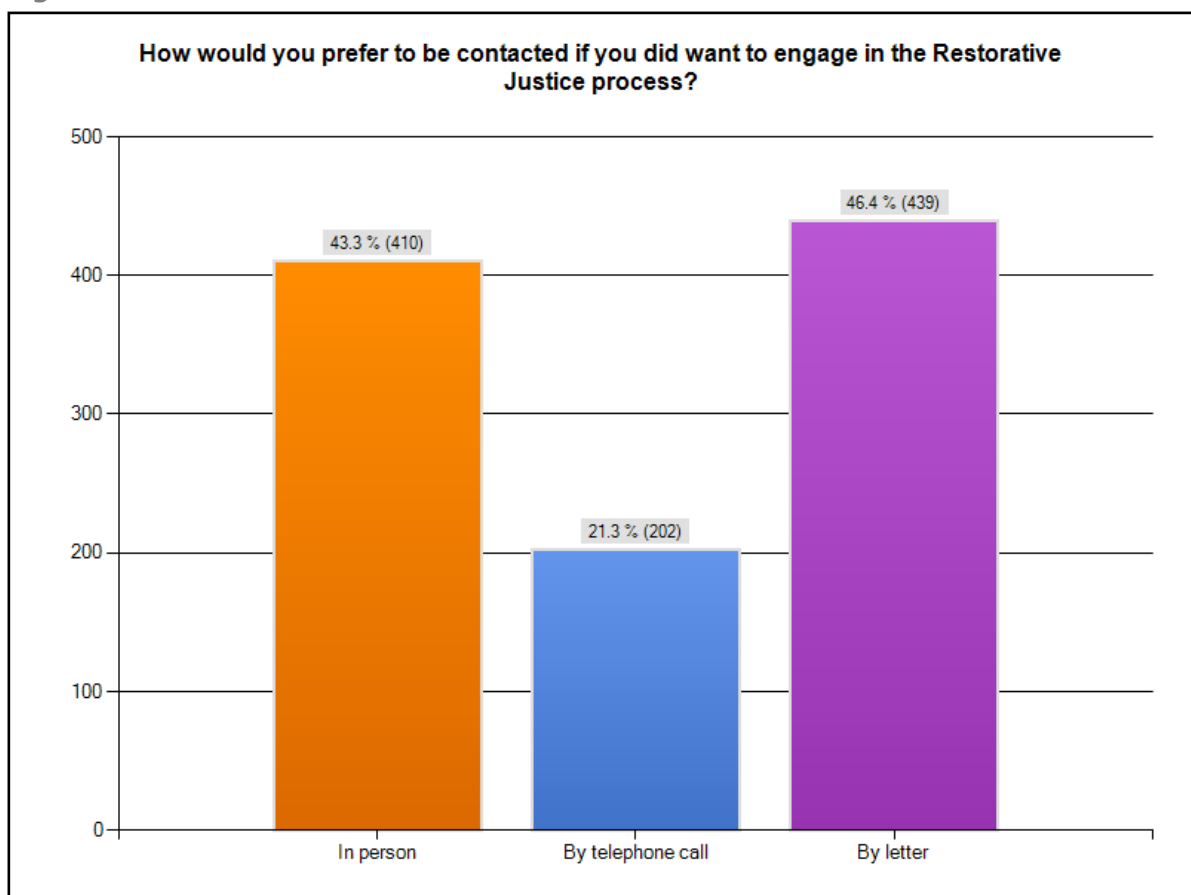


Figure 6.2



Victim Support & Witness Service

The Victim Support and Witness Service is an independent organisation supporting both victims and witnesses of crime.

Victim Support and Witness Service staff and volunteers are trained to provide emotional support, information and practical help to those who have been affected by crime, and to their relatives and friends, whether or not the crime has been reported and regardless of when it occurred.

This section asks respondents if they would access the service, and what support they would like to receive.

Figure 7.1

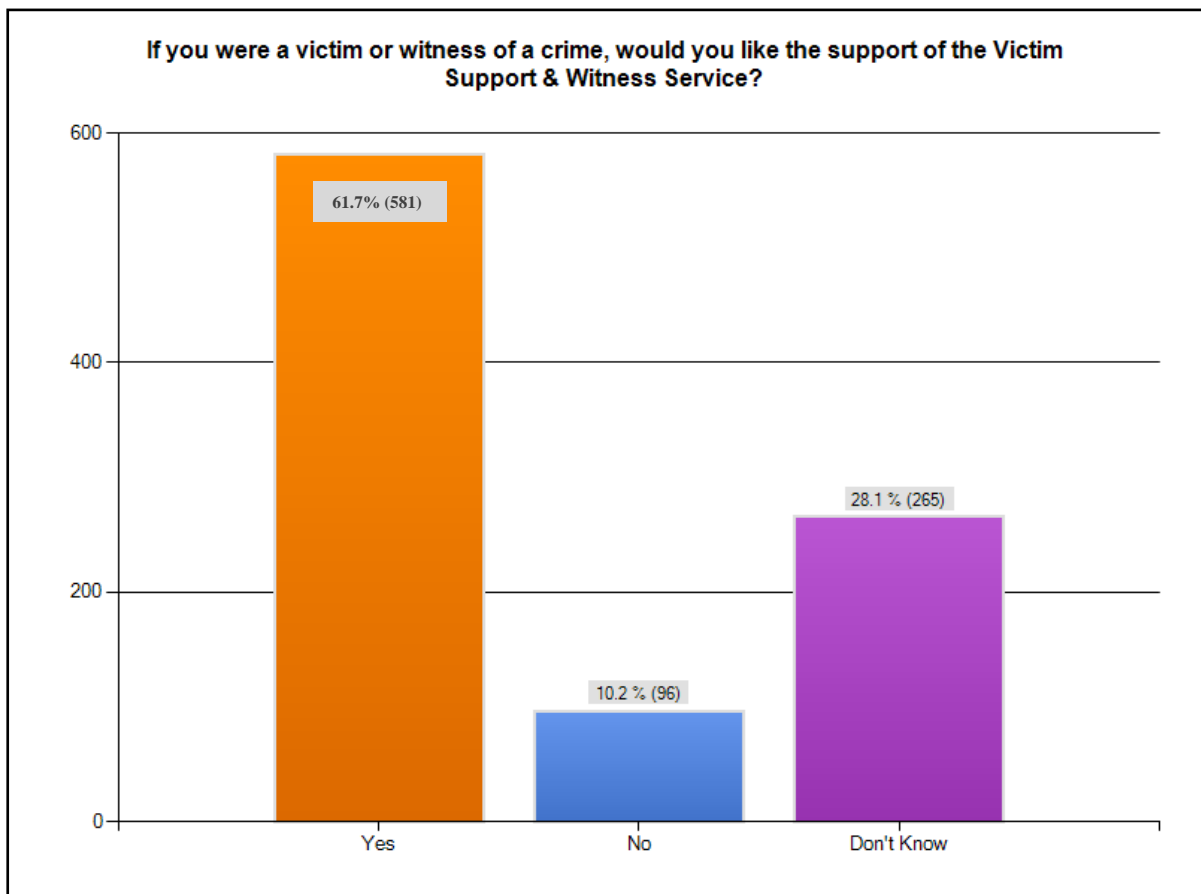


Figure 7.2

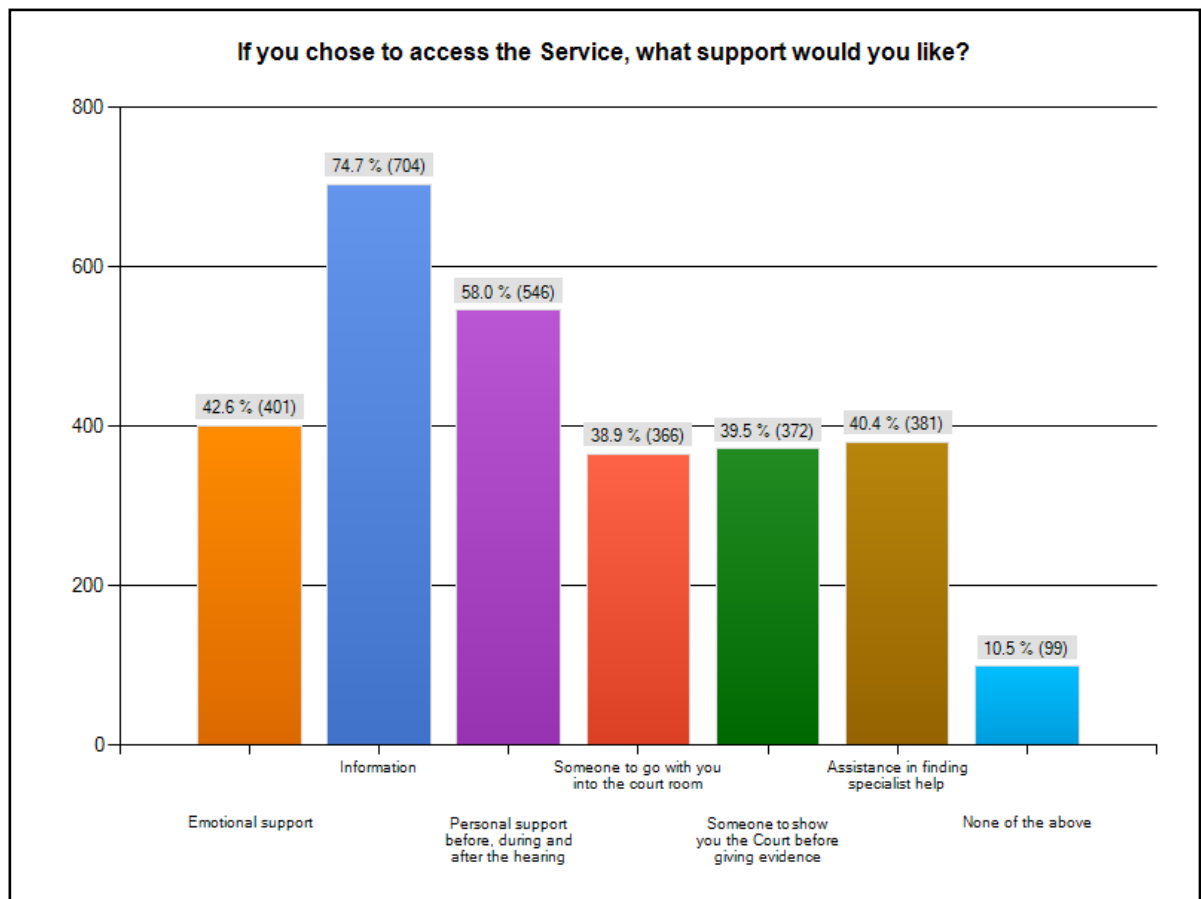
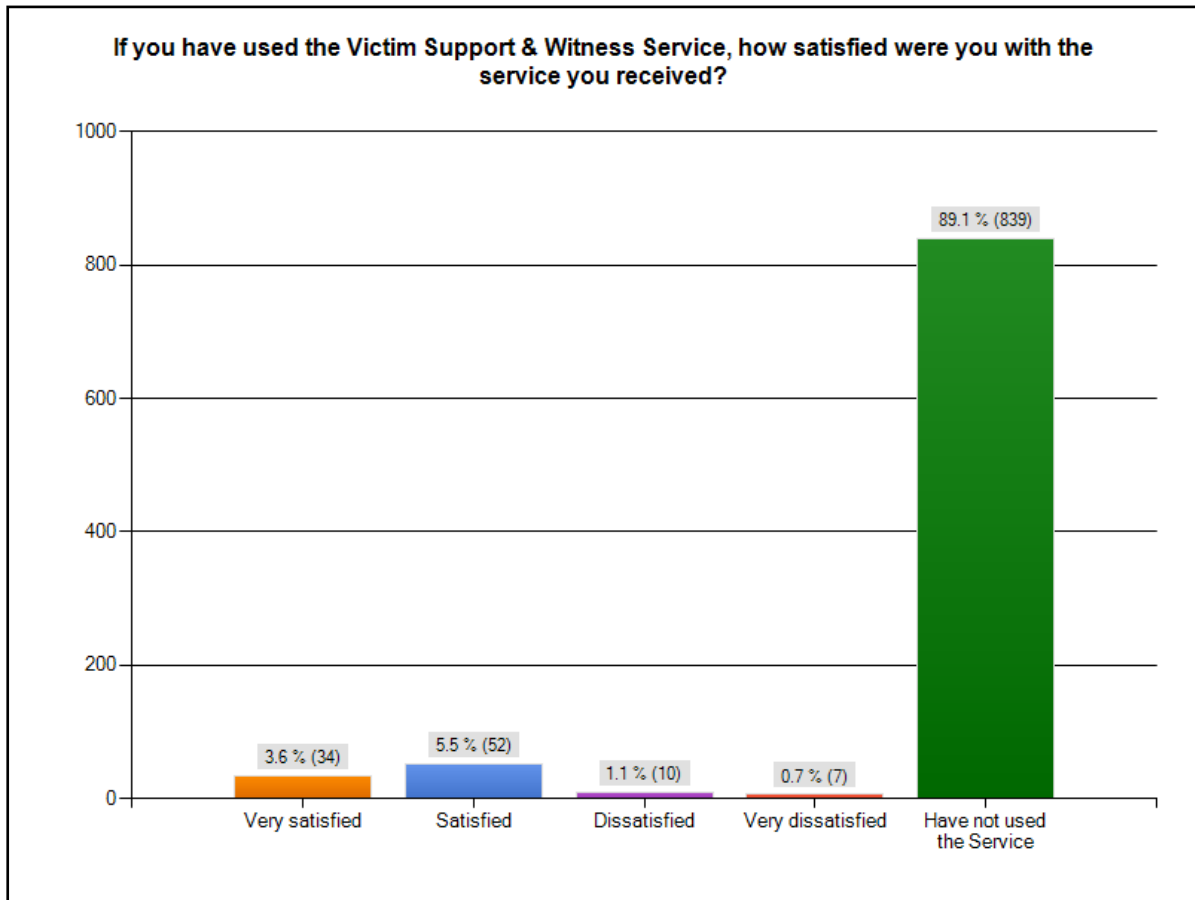


Figure 7.3



Discussion Points

The results of this survey highlight a number of areas where respondents feel that improvements could be made, or where they may like further information.

Figure 2.1 clearly shows that respondents feel that alcohol, drugs and a lack of discipline from parents are major causes of crime in the Bailiwick of Guernsey. The Drug and Alcohol Strategy has developed and funded a number of initiatives in order to address alcohol and drug related crime on the Island. The Criminal Justice Drug and Alcohol Services are a partnership between the Guernsey Probation Service and the Guernsey Alcohol and Drug Abuse Council and Drug Concern, which aim to divert offenders into treatment and support in order to minimise harm to the community by reducing drug and alcohol related crimes. In addition to these services, the Drug and Alcohol Strategy funds a Prison Substance Misuse Worker who provides support, education and counselling to prisoners with substance misuse problems.

The Drug and Alcohol Strategy supports a whole host of initiatives directed at children and young people, which provide interventions at all stages. The Strategy aims to ensure that young people are given clear and consistent messages about drugs and alcohol from an early age.

[For more information about the Drug and Alcohol Strategy please go to www.gov.gg/article/6677/Drug--Alcohol-Strategy]

The Guernsey Police note that the motivations for individuals to commit crime are numerous and that there are often a combination of factors. For example, excessive alcohol consumption may well be a contributory factor in many acts of random damage and assaults. However they are less likely to be an issue in cases of theft, shoplifting and fraud, where greed and ease of opportunity are likely to be a factor.

The Guernsey Police work together with a range of organisations to help reduce the harm caused as a result of crime as well as the contributory causes. The Neighbourhood Policing Team continues to actively engage with communities in a number of locations across the Island (and Alderney) to provide lasting solutions to long standing problems.

[For more information about the Guernsey Police please go to www.guernsey.police.uk/]

“The Youth Commission, through its clubs, its work in schools and with voluntary organisations and partners such as The Hub, works to provide meaningful activities for young people and the teaching of character building and resilience skills. These will be extended this year with the introduction of the Princes Trust Programmes, which provides positive role models for young people.

In addition, the need to focus on support on helping parents themselves has been identified and we are hoping to achieve this through work in the new Children and Young People’s Plan”.

Figure 5.1 shows that respondents feel that they don't know very much about the criminal justice system, which is further confirmed by Figures 5.5 and 5.6 which show that respondents don't know how to access this information and that they would like to know more. The Home Department is committed to improving public-facing information relating to the criminal justice system and promoting greater understanding of it. The Department is also working to promote opportunities for the community to become more involved in criminal justice services and to provide more opportunity for individuals to provide feedback on service-delivery.

In 2014 the Criminal Justice Strategy will be publishing a guide to the criminal justice system for victims and witnesses. This guide will provide an outline of the criminal justice process in clear and accessible language, together with an overview of each organisations role within this process. It will also detail information about the support services available to victims and witnesses including relevant contact details. The guide will be made available online and at various locations around the Island.

[For more information about the criminal justice system please go to www.gov.gg/homedepartment]

[Information about the Royal Court can be found at www.guernseyroyalcourt.gg]

The Home Department and Criminal Justice Strategy would like to thank all of the local organisations who kindly promoted the Crime & Justice Survey 2013 through their social media sites.