



PUBLIC SERVICES

A STATES OF GUERNSEY GOVERNMENT DEPARTMENT



GUERNSEY WASTE ANNUAL REPORT 2014

Contents

- **Executive Summary** 3
- **Introduction** 4
 - **Vision** 4
- **Review of 2014** 5
 - **Mont Cuet** 5
 - **Household Recycling** 6
 - **Longue Hougue Recycling Facility & Mont Cuet
Civic Amenity Site** 6
 - **Longue Hougue Recycling Site** 6
 - **Waste Strategy** 8
 - **Procurement of Infrastructure** 8
 - **Export of Waste** 8
 - **Kerbside Collection** 9
 - **Legislation & Policy** 9
 - **Charging Ordinances** 9
- **Management** 10
- **Appendices** 11
 - **1). Financial Report** 11
 - **2). Waste Disposal & Recycling Charges** 13
 - **3). Waste Sites Overview** 14
 - **4). Bring Bank Sites** 15
 - **5). Acknowledgements & Contact Details** 17

1). Executive Summary

2014 proved to be a challenging year for the Guernsey Waste team with Mont Cuet approaching ever closer to the end of its life. Although the inputs into Mont Cuet were of a similar rate to that of 2013, highlighting that the inputs appear to be stabilising, it has emphasised the urgency with which a sustainable waste management system must be implemented.



The team is working towards implementing a sustainable waste management system by concentrating on two key areas; the delivery of the Waste Strategy and associated infrastructure, and waste minimisation and recycling initiatives - all while maintaining 'business as usual' services.

The team rose to the challenges which were presented in the year and successfully progressed the various elements of the Waste Strategy. This included the implementation of the kerbside recycling scheme, the introduction of a glass recycling trial, progressing the procurement of the infrastructure for the Waste Transfer Station, and obtaining approval for the development of the necessary legislation. These were all positive developments for the Waste Strategy.

Subsequent to the introduction of kerbside recycling, the Public Services Department (PSD) is pleased to report a rise of the recycling rate to 49.1% - an encouraging result. At the time of writing (summer 2015), we are pleased to report that the rate has now increased to the 50% target mark.

Throughout 2014, the team worked hard to progress all of the projects that comprise the Waste Strategy Programme as well as continuing business as usual services. Overall the year was a positive and successful one for Guernsey Waste and it is hoped this success continues into 2015. The public should also be congratulated for their contribution in trying to maintain a sustainable and environmentally-friendly approach to waste management.

RICHARD EVANS

INTERIM DIRECTOR OF INFRASTRUCTURE & CORPORATE SERVICES

2). Introduction

Guernsey Waste is part of PSD and is responsible for the provision of a variety of waste management and recycling services. These services are operated across a number of sites through a range of contracts with third parties. The key services which PSD is mandated to deliver (through third party contracts/service level agreements) in regard to waste management include the operation and management of:



- The Waste Segregation and Recycling Facility (Fontaine Vinery)
- Longue Hougue Land Reclamation Site (Inert builders waste)
- Mont Cuet Landfill Site
- Chouet Horticultural Site
- Longue Hougue Household Waste Recycling Centre
- Various Bring Bank Sites
- Previous Landfill Sites

In addition, the Guernsey Waste team is responsible for implementing and driving various waste minimisation and recycling initiatives such as the 'Love Food Hate Waste' campaign. This includes a number of educational pieces across the island and working with local supermarkets and other stakeholders.

Guernsey Waste is also responsible for the implementation of the Waste Strategy, which was agreed by the States of Deliberation in February 2012. The Waste Strategy Programme comprises of a number of projects as follows:

- Procurement of infrastructure for the future waste management facility
- Export of Waste
- Kerbside Collections
- Legislation and Policy

VISION

The vision of the Guernsey Waste team is:

'One team, delivering quality waste services to the people of Guernsey.'

3). Review of 2014

MONT CUET

The Mont Cuet quarry has a limited life. Information derived from regular surveys of the site indicates that, based on a rolling five-year average rate of fill, the site will be completely full by the end of 2021 - giving just under 7 years of disposal. However, this is based on the original rounded profile for the site. A new profile has now been developed to enable the ongoing composting of green waste and importantly preserving some space for the long term disposal of hazardous waste at the site. The remaining life of the site based on this adjusted profile is 3.5 years disposal, allowing filling until mid-2018. Beyond this an alternative site may be required to continue green waste composting.

The overall tonnage of waste for the 12 months ending 31 December 2014 was 33,256 tonnes; however this included extra-ordinary input of 764 tonnes of soil contaminated with Japanese Knotweed (2 incidences in 2013 & 2014 with significant tonnages) . Net waste inputs (excluding contaminated soil) appear to have stabilised after falling steadily in recent years. Reductions in household waste have been countered by increased commercial waste input; however the commencement of the export of Refuse Derived Fuel within the commercial sector towards the end of 2014 is likely to result in further reductions of waste entering the landfill site in the coming years.

Monthly net waste inputs into Mont Cuet for the period 2012-14 are as follows:

Month	Net Inputs		
	2012	2013	2014
Jan	2,800	2,874	3,041
Feb	2,512	2,525	2,481
Mar	3,027	2,676	2,778
Apr	2,658	2,688	2,738
May	2,745	2,676	2,624
Jun	2,852	2,468	2,642
Jul	2,997	2,841	3,582*
Aug	2,827	2,761	2,711
Sep	2,695	2,516	2,772
Oct	2,632	4,542*	2,874
Nov	2,681	2,637	2,559
Dec	2,852	2,492	2,454
Total (Year)	33,441	33,697	33,256
(excl. contaminated soil)		32,044*	32,492*
Monthly Average	2,787	2,808	2,771
(excl. contaminated soil)		2,670*	2,708*

**In October 2013 and July 2014, soil contaminated with noxious Japanese Knotweed was deposited at Mont Cuet, significantly inflating input*

Note that the net waste input tonnage does not include materials brought into the site for engineering purposes and to cover the waste.

HOUSEHOLD RECYCLING

Guernsey Waste provides bring bank sites across the island where people can drop off their recycling. These sites (listed in Appendix 2) are free at point of use. At the end of 2014 there were 36 such sites but it should be noted that, following the introduction of kerbside collections, a programme of rationalisation is being implemented and a number of sites will be removed during 2015.



Kerbside collections of dry recyclables (excluding glass) commenced on 10 March 2014. Initial results are very encouraging. Compared to 2013, there has been an increase of approximately 200 tonnes in dry recyclables, which equates to a 30% increase for combined tins/cans, plastic and carton weights, and a 5% increase for combined paper and card.

The increase seen in all of these materials since the launch of kerbside collections is clearly very good news, and shows that islanders are embracing the kerbside scheme and the convenience it presents wholeheartedly.

A 6-month glass collection trial commenced in parts of St Peter Port in November 2014. Initial results have been very encouraging, with good take-up rates and very few complaints. This trial is due to conclude in 2015 and results will be reviewed to help inform decisions for the future of glass kerbside collections.

The overall annual domestic recycling rate for 2014 was 49.1% which showed an encouraging increase on the 2013 rate of 46.9%. 8,044 tonnes of household waste was recycled through the bring banks, the Longue Hogue Recycling Facility, and the Mont Cuet Civic Amenity site in 2014.

LONGUE HOUGUE RECYCLING FACILITY & MONT CUET CIVIC AMENITY SITE

In the year ending December 2014, just under 1,700 disclaimers were completed for removal of items from the Recycling Facility for re-use, which represents approximately 36 tonnes of materials, ranging from DVDs to household electrical items to furniture.

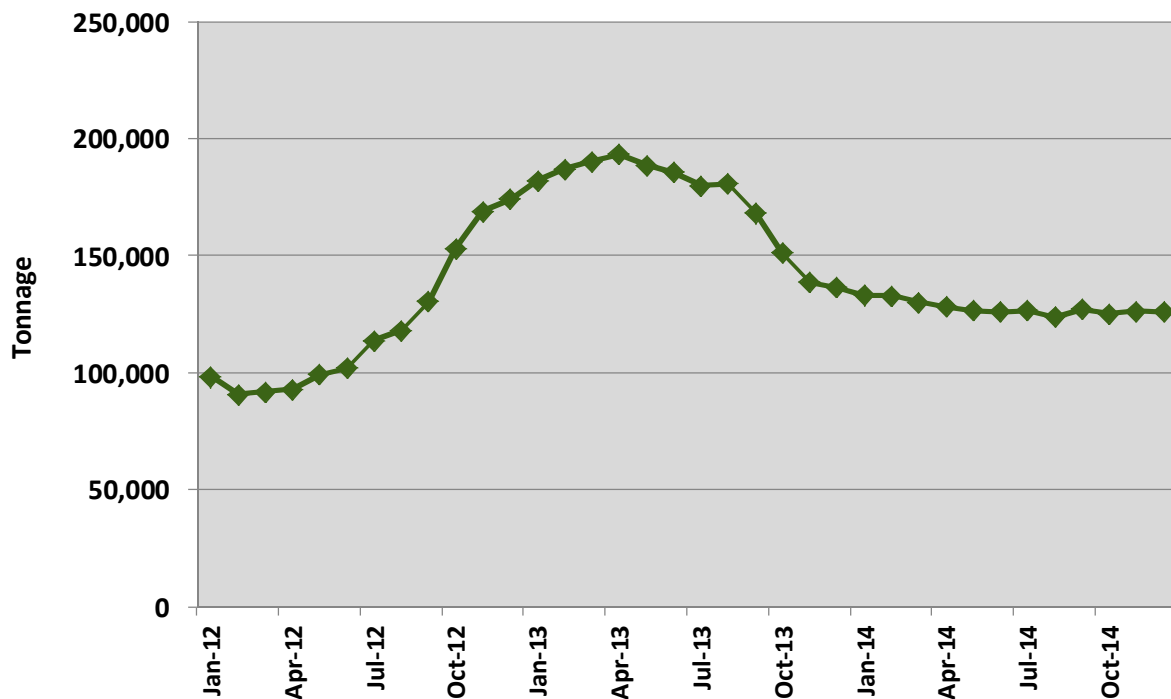
In addition, more than 1,000 tonnes of materials were recycled through these facilities, ranging from scrap metal to DVD's, and household electrical items to fluorescent lighting and printer cartridges.

LONGUE HOUGUE RECLAMATION SITE

Like Mont Cuet, Longue Hogue Reclamation Site has a finite life. The site is surveyed biannually, and based on recent survey information, it is estimated that Longue Hogue has a further 6 years' life (based on filling rates from 2009 – 2014). The net inputs for 2012 - 2014 at Longue Hogue can be seen in the table overleaf:

Month	Net Inputs		
	2012	2013	2014
Jan	7,787	15,580	12,403
Feb	8,746	13,706	13,524
Mar	9,427	12,832	9,970
Apr	6,816	9,805	7,982
May	13,812	9,180	7,375
Jun	12,202	9,093	8,714
Jul	17,611	11,901	12,478
Aug	11,784	12,613	9,851
Sep	20,284	8,001	11,115
Oct	30,931	13,644	11,834
Nov	24,223	11,672	12,860
Dec	10,962	8,585	8,350
Annual Total	174,584	136,611	126,455
Monthly Average	14,549	11,384	10,538

The filling rates for Longue Hougue outlined in the above table are illustrated by the graph below:



The ability to dispose of inert waste appropriately is vital to the local construction industry, with the peak shown in the chart above linked to inputs from major building projects towards the end of 2012. Filling rates have subsequently stabilised.

With a projected life of only 6 years remaining, work commenced in 2014 to identify a follow on site for Longue Hougue for inert waste disposal to continue in the longer term, and this will be progressed further during 2015.

WASTE STRATEGY

In February 2012, the States approved a revised Waste Strategy, which was formulated with the internationally accepted Waste Hierarchy at its core. This focused on minimisation and recycling of waste (gradually increasing up to a 70% recycling target in 2025), leaving only a remaining 'residual' amount to be dealt with (full details of the strategy can be found in Billet d'État IV of 2012). The Guernsey Waste team is responsible for the delivery of this strategy.



Having considered a number of options for the management of the remaining residual amount of waste, the recommended option approved by the States of Deliberation was for export for recovery. The Guernsey Waste team are working with a 'bidder' group to deliver a Waste Transfer Station to manage this residual waste.

Procurement of Infrastructure

The procurement of infrastructure project addresses the design and build of the Island's future waste management site.

The Project Team are currently working with a consortium of companies (Bidder Group) comprising of:

- Amec Foster Wheeler (with Geomarine as a subcontractor);
- States Works; and
- Guernsey Recycling

With the assistance of the States' Strategic Procurement Group the tender process changed from a 'competitive tender' to a 'single bidder negotiation'. This resulted in the States Project Team working more closely with the remaining bidder in a Joint Project Team approach.

This negotiation process was formalised by the signing of a 'Preferred Bidder Letter' by all parties and was approved by Treasury and Resources.

At the end of 2014, the infrastructure outline design work was well advanced and the initial costings for the infrastructure were expected early in 2015.

Export of Waste

This project was not given a high priority in 2014 because it is dependent on suitable waste processing infrastructure being in place. However, tender documents were prepared ready for issuing in 2015 in order to obtain costs to inform the full business case for this project in due course.

Kerbside Collections

Discussions have continued with the Douzaines concerning future collections of both dry recyclables and black bag waste. In the meantime, the Department has introduced an interim kerbside collection scheme, which has proved a great success, as outlined in the household recycling section of this report (*page 5*).

Legislation & Policy

The States approved the policy recommendations made in February and December 2014 with regard to the necessary legislation to support the Waste Strategy. The Laws will be drafted in 2015 by the Law Officers in close consultation with the Public Services Department, Environment Department and Policy Council.

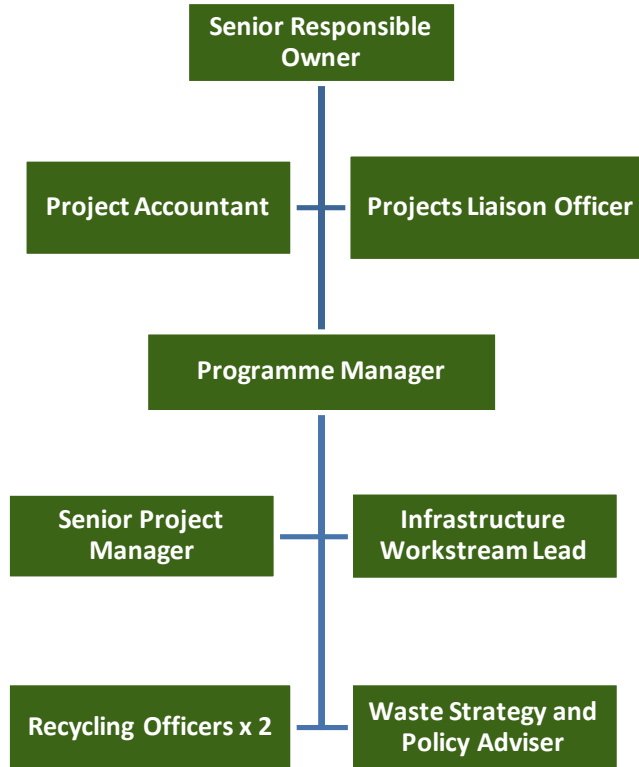
It is planned that the draft Laws will be submitted to the Legislation Select Committee in July 2015 and will then be considered by the States. Subject to approval by the States, the laws will then be submitted to the Privy Council before being registered at the Royal Court.

Charging Ordinances

Following approval of the policy recommendations on charging mechanisms in the December 2014 States Report, drafting of the charging Ordinances will begin in 2015.

4). Management

The Department has a small but dedicated team delivering the waste management services outlined in this report as well as implementing the Waste Strategy Programme. The team structure is shown below:



2014 saw the beginning of a team restructuring process which will continue into 2015. This will ensure that the necessary resources are in place to facilitate the successful delivery of ‘business as usual’ services and the implementation of the Waste Strategy.

In addition, legal support is provided to the team in regard to the Waste Strategy implementation by the States of Guernsey’s Law Officers. Procurement advice and Project Assurance is also provided by the States of Guernsey’s Treasury and Resources Department. External advisers who are experts in the field of waste management provide advice to the team when necessary.

5). Appendices

Appendix 1 – Financial Report

The Solid Waste Trading Account was established with effect from 1 January 2014, in accordance with the States resolutions of 12 February 2014. All income and expenditure associated with the management of solid waste is included in the Solid Waste Trading Account. The account also incorporates the balances brought forward from the former Waste Strategy Fund.

The Solid Waste Trading Account is intended to be self-funding, currently from the gate fees collected at the waste management sites; and post implementation of the new strategy from charges made to householders and commercial gate fees. The actual income and expenditure of the Solid Waste Trading Account can be seen below:

	2014	2013*
	Actual	Actual
	£'000s	£'000s
Income		
Operating Income	6,685	6,572
Investment Return	81	196
	<hr/> 6,766	<hr/> 6,768
Expenditure		
Pay Costs	355	411
Staff Non-Pay Costs	54	56
Support Services	5,167	3,531
Supplies & Services	413	307
	<hr/> 5,989	<hr/> 4,305
Net Surplus for the year	<hr/> 777	<hr/> 2,463
Balance at 1 January	4,002	3,082
Net Surplus for the year	777	2,463
Transfer to General Revenue	(1,435)	(1,543)
Balance at 31 December	<hr/> 3,344	<hr/> 4,002

**The above table is derived from the 2015 July 29th Billet XV 'States Annual Accounts 2014'. The 2013 figures have been restated to be on a comparable basis with 2014 and include the incomes and expenditures of business as usual waste management operations.*

The total income in 2014 was £6.766 million (2013: £6.768 million) so static overall with an increase on gate fees offsetting the drop in investment income.

The total operating income for 2014 includes income from the Gate Fees, including waste surcharges, at the waste management sites at Mont Cuet, Longue Hougue and Fontaine Vinery which totalled £6.560 million (2013: £6.424 million) and also includes relatively modest income from the on-sale of recyclable materials totalling £0.125 million (2013: £0.148 million).

The investment return for 2014 is lower than the return in 2013 for two reasons. Firstly, investment returns earned generally by the States of Guernsey were significantly lower in 2014 than in 2013 (which was a very good year). Secondly, the investment return is payable relative to

the balance of funds held in the Solid Waste Trading Account, not incomes, and those reduced throughout 2014 by around £658,000.

Total Expenditure for 2014 was £5.989 million (2014: £4.305 million) to give a surplus of £0.777 million (2013: £2.463 million), so there has been quite a jump in total expenditures. This is as a consequence of increased costs from implementing kerbside collections in 2014 and additional support costs associated with progressing the infrastructure development project, both of which were new or stepped up activities in 2014.

Net expenditures for 2014 by area of operational activity is summarised below:

2014 Original Budget	2014 Total Authorised	Net Expenditure by Operational Activity	2014 Actual	2013 Actual*
£'000	£'000		£'000	£'000
(2,442)	(1,658)	Refuse disposal and land reclamation	(1,838)	(2,071)
674	797	Recycling and waste minimisation	723	528
n/a	599	Waste strategy implementation	338	(920)
(1,768)	(262)	Net Surplus for the year	(777)	(2,463)

**Some of the figures in the above table is derived from the 2015 July 29th Billet XV 'States Annual Accounts 2014'. Please note the 2013 figures listed have been restated to be on a comparable basis with 2014 and to include the incomes and expenditures of business as usual waste management operations.*

Appendix 2 – Waste Disposal & Recycling Charges 2014 & 2015

	<u>2014</u>	<u>2015</u>
<u>Mont Cuët</u>		
Standard Rate	£156.16/tonne	£171.78/tonne
Contamination Rate	£234.29/tonne	£257.72/tonne
Commercial Green Waste	£26.93/tonne	£29.62/tonne
Non-Notifiable Pre-sorted Special Waste	£156.16/tonne	£171.78/tonne
Notifiable Special Waste	£311.90/tonne	£343.09/tonne
Private Householder Waste	£2 per bag	£2 per bag
<u>Longue Hougue</u>		
Standard Rate	£12.77/tonne	£14.05/tonne
Soil with turf/vegetation	£58.48/tonne	£64.33/tonne
Reload Charge	£16.42 per load	£18.06 per load
Private Householder Inert Waste	£1 per bag	£1 per bag
<u>Waste Segregation & Recycling Facility</u>		
Standard Rate	£156.16/tonne	£171.78/tonne
Commercial Recyclables (pre-sorted)	£40.00/tonne	£40.00/tonne
Reload Charge	£56.43 per load	£62.07 per load
Business 'Domestic'	Free*	Free*
<u>Chouet Horticultural Site</u>		
	Free (household users only)	Free (household users only)

* The business must be an account holder at La Fontaine, but will not be charged unless the amount exceeds £5 per month (based on the standard charge of £40/tonne).

Appendix 3 – Waste Sites Overview

The Department is responsible for providing various waste management and recycling services at different sites which are operated by States Works and private sector bodies through service level agreements and contracts. The States-run sites are as per the table below; some levy charges apply at point of use for these sites such as a gate fee.

Site	Opening hours	Materials accepted	Activity
Mont Cuet Landfill Site, Chouet Headland Tel: 245106	Monday to Friday: 07:00 – 16:00 Saturday: 07:00 – 10:00 (Closed Bank Holidays)	Black bag waste (household and commercial); commercial residual waste; commercial green waste	Waste disposal/ windrow composting
Chouet Horticultural Site Tel: 245106	Monday to Friday: 07:00 –16:00 Sat – Sun & Bank Holidays* 08:00 – 17:00	Household green waste	Preparation for windrow composting
Longue Hougue Reclamation Site, Bulwer Avenue Tel: 249628	Monday to Friday: 07:30 – 16:45 Saturday: 07:00 – 10:00 (Closed Bank Holidays)	Inert waste	Land reclamation
Fontaine Vinery Waste Segregation Facility, Vale Road Tel: 200280	Monday to Friday: 09:00 – 15:00 (Closed Bank Holidays)	Commercial mixed waste; dry recyclables	Segregation and processing
Household Waste Recycling Facility, Longue Hougue	Winter (1 Nov – 31 Mar) Mon – Fri: 07:30–16:00 Sat, Sun & Bank Holidays*: 09:00–13:00 Summer (1 Apr – 31 Oct) Mon – Fri: 07:30– 16:00 Sat, Sun & Bank Holidays*: 08:00-17:00	Unwanted household items (with some exclusions)	Reuse or recycling

**These opening hours will change depending on hours of daylight*

Appendix 4 – Bring Bank Sites

Location of site	Glass Bottles & Jars	Steel Cans	Aluminium (Cans, aerosols, trays, foil)	Paper	Plastic pots, tubs, trays & bottles*	Textiles	Card-board	Cartons (Juice/Milk etc.)	Poly-styrene	Perry's Guide Ref
<u>SUPER SITES</u> (ALL BANKS)										
Vazon	•	•	•	•	•	•	•	•		14B1
Manor Stores (St M)	•	•	•	•	•	•	•	•		31E2
Waitrose (Rohais)	•	•	•	•	•	•	•	•	•	16C4
Salerie Comer	•	•	•	•	•	•	•	•		17H3
L'Eree	•	•	•	•	•	•	•	•		20B1
Longfrie Inn	•	•	•	•	•	•	•	•		27F1
Chouet	•	•	•	•	•	•	•	•	•	6A1
<u>OTHER SITES</u> (LIMITED BANKS)										
Crabby Jacks	•									14B1
Rockmount	•	•	•							8A4
Saumarez Park	•	•	•							15G2
Forest Stores	•	•	•	•						28D2
Venture Inn	•	•	•							28C3
The Last Post	•	•	•	•	•	•	•	•		23F4
PE Hospital	•	•	•			•				24C3
Grande Marche (St M)	•	•	•	•		•				30D1
Admiral Park (by multi-story car park)	•	•	•			•				17G2
Beau Sejour	•	•	•			•				17F3
Les Rocquettes Hotel	•									17E5
North Beach	•	•	•							17G4
St Peter's Post Office	•	•	•	•						27G1
Alliance	•	•	•	•		•				10C2
Bulwer Avenue	•	•	•			•				11E4
Checkers Express, L'Islet	•	•	•							9H1
Clock Tower, Southside	•	•	•	•		•				11F3
L'Islet (opposite St Mary's Church)						•				9H1
Pony Inn	•	•	•							9H2

Location of site	Glass Bottles & Jars	Steel Cans	Aluminium (Cans, aerosols, trays, foil)	Paper	Plastic pots, tubs, trays & bottles*	Textiles	Card-board	Cartons (Juice/ Milk etc.)	Poly-styrene	Perry's Guide Ref
The Bowl	•	•	•			•				17F1
Wine & Beer Importers	•	•	•							11F3
Perelle Garage	•	•	•			•				13F4
Les Buttes, Torteval	•	•	•	•						26C3
Bordeaux	•	•	•	•		•				11H1
Hampshire Lodge	•	•	•							9E2
Landes du Marche	•	•	•							9E5
Pembroke	•	•	•			•				6C2
Vale Douzaine Room				•	•	•		•		6D5
Indoor Cricket Centre	•	•	•	•	•		•			8C4

*(no black plastic or film)

Appendix 5 – Acknowledgements & Contact Details

We are indebted to the hard work and dedication of staff, many of whom have to put up with working in high-pressure and complex situations to achieve the goals set for the team. This commitment from staff ensures that we are able to meet our objectives and provide a reliable and effective waste service to islanders both now and in the future.

CONTACT US

Postal Address: Guernsey Waste, States Works, La Hure Mare, Vale, GY3 5UD

Tel: +44 (0)1481 246263

E-Mail: publicservices@gov.gg

Web: www.gov.gg/publicservices